



Republic of the Philippines
National Irrigation Administration
Central Office



May 20, 2021

FOR : **GEN RICARDO R VISAYA (Ret)**
Administrator
This Agency

FROM : **The Manager**
Corporate Planning Services

SUBJECT : **NIA CY2020 YEAR-END REPORT**

We respectfully submit the NIA's CY2020 Year-End Report.

Please be informed that the physical Accomplishment used in the report are based from the Online Physical Accomplishment Information System as an official reporting system of the agency per MC No. 9, s. 2017, others are from the submitted reports of different department. The report reflects the reconciled data for the Status of Irrigation Development.

For your information and ready reference.


ROGELIA C. DELA TORRE

Manager, Corporate Planning Services

cc: PAIS



Republic of the Philippines
National Irrigation Administration
Central Office

NIA CY2020 YEAR-END REPORT

TABLE OF CONTENTS

Item	Title	Page
	COVER PAGE	i
	TABLE OF CONTENTS	ii
	LIST OF TABLES	iii
	LIST OF ANNEXES	iii
	ABBREVIATIONS/ACRONYMS USED	lv
	EXECUTIVE SUMMARY	Vii
	PLANNING AND DEVELOPMENT OF IRRIGATION PROJECTS	1
I.	Project Preparation	2
II.	Project Implementation	3
A.	Foreign-Assisted Projects (FAPs)	3
B.	Locally Funded Projects (LFPs)	9
C.	Continuing Appropriations	12
III.	Irrigation Development	13
	OPERATION AND MAINTENANCE OF IRRIGATION SYSTEMS	14
I.	System Management	15
II.	Institutional Development	15
III.	Equipment Management	17
IV.	Irrigation Engineering Center	18
	ANNEXES	22

LIST OF TABLES

Table	Title	Page
1	Summary of Physical Status of Irrigation Projects	ix
2	Summary of Financial Status of Irrigation Projects	x

LIST OF ANNEXES

Annex	Title	Page
A	CY2020 Irrigation Program	23
B	Physical Status of Irrigation Projects / CY2020 Irrigation Program (R.A. No. 11260) / as of December 31, 2020	24
C	Financial Status of Irrigation Projects / CY2020 Irrigation Program / January 1 – December 31, 2020	40
D	Project Preparation Activities / Feasibility Study & Detailed Engineering for Irrigation Projects / as of December 31, 2020	48
E	Status of Irrigation Development as of December 31, 2020	49
F	Service and Irrigated Area (in ha) of National Irrigation Systems Crop Year 2019 - 2020 / as of December 31, 2020	50
G	Service and Irrigated Area of Communal Irrigation Systems Crop Year 2019 - 2020 / as of December 31, 2020	51
H	Annual Irrigation Development Program and IMT Accomplishment as of December 31, 2020	52
I	Status of NIA Equipment / as of December 31, 2020	53

PICTORIALS

ABBREVIATIONS/ACRONYMS USED

ABB/ACR	MEANING	ABB/ACR	MEANING
ARMM	Autonomous Region in Muslim Mindanao	FSDE	Feasibility Study and Detailed Engineering
B	Billion	FUSA	Firmed-Up Service Area
BSPP	Balikatan Sagip Patubig Program	GOP	Government of the Philippines
CAR	Cordillera Administrative Region	HDPE	High Density Polyethylene
CARP-IC	Comprehensive Agrarian Reform Program – Irrigation Component	Ha	hectare
CCAW	Climate Change Adaptation Works	LFPs	Locally Funded Projects
CIP or CIS	Communal Irrigation Project or System	LGU	Local Government Unit
COB	Current Operating Budget	LP	Loan Proceeds
COA	Commission on Audit	M	Million
CY	Calendar Year	MARIIS	Magat River Integrated Irrigation System
DAR	Department of Agrarian Reform	MPIP	Multipurpose Irrigation Project
DA	Department of Agriculture	NCA	Notice of Cash Allocation
DBM	Department of Budget and Management	NEDA	National Economic and Development Authority
EO	Executive Order	NGO	Non Government Organization
EDCF	Economic Development Cooperation Fund	NIA	National Irrigation Administration
FAPs	Foreign Assisted Projects	NIP or NIS	National Irrigation Project or System
		NISRIIP	National Irrigation Sector Rehabilitation and

ABBREVIATIONS/ACRONYMS USED

ABB/ACR	MEANING	ABB/ACR	MEANING
O&M	Operation & Maintenance	RENIS/CIS	Restoration of National/Communal Irrigation Systems
OGA	Other Government Agencies		
PC	Peso Counterpart	REGPIP	Repair of Groundwater Pump Irrigation Project
PCRs	Project Completion Reports		
PIS	Private Irrigation Sytem	RIOs	Regional Irrigation Offices
PD	Presidential Decree	RIP or RIS	River Irrigation Project or System
PMO	Project Management Office	ROW	Right-of-Way
POW	Program of Work	SEC	Securities and Exchange Commission
QRF	Quick Response Fund		
RA	Republic Act	SIP	Small Irrigation Project
		SRIP	Small Reservoir Irrigation Project

EXECUTIVE SUMMARY

EXECUTIVE SUMMARY

NIA pursued the implementation of 170 infrastructure projects for CY2020. Of the total number, 38 projects are in Luzon, 32 in Visayas, and 20 in Mindanao and 80 in selected provinces nationwide. Other activities for the year were planning and development of irrigation projects, repair, rehabilitation and restoration projects of national and communal irrigation systems, organization and development of irrigators associations (IAs), implementation and monitoring of Irrigation Management Transfer (IMT), and execution and monitoring of climate change adaptation works.

The CY2020 program included the: generation of 26,839 hectares; restoration of 10,895 hectares; repair & rehabilitation works of 167.40 km earth canal, 1,350.12 km concrete lined canal, 139.53 km high density polyethylene (HDPE) pipe, 94,965 sq. m. of coconet slope protection area, 67.06 km concrete roads, 426.17 km gravel roads and 4,961 unit of canal structures.

The agency accomplished 36,576 hectares new area generation, and 14,244 hectares area restoration. Repair works dwelt on 409.95 km of earth canals, 1,617.09 km of canal lining, 318.01 km of high-density polyethylene (HDPE) pipe, 293,213 sq. m. of coconet slope protection area, 106.07 km concrete roads, 487.83 km gravel roads and 7,707 unit of canal structures. These included accomplishments under the CY2020 Program and carry-over projects from (2015-2019).

Some 79,636 jobs were generated in the construction of new irrigation projects and rehabilitation of existing irrigation systems. NIA's Irrigation Development Program for the year had a funding requirement of ₱ 41.197 B: ₱ 36.277 B from approved budget for CY2020, ₱ 0.467

from Section 7 and ₱ 4.453 B from previous year's unobligated balance and from other sources. Total available allotment for the year was ₱ 40.250 B with notice of cash allocation (NCA) received of ₱ 28.227 B. Obligations incurred reached ₱ 35.252 B.

NIA operated and maintained 247 NISs with an aggregate service area of 901,406 hectares and a firm-up service area (FUSA) of 801,899 hectares at the beginning of the year. The irrigation-programmed service area for this crop year is 1,380,584 hectares. Irrigated area was 688,052 hectares during the dry season 2019 (November 2019 to April 2020), 718,628 hectares during the wet season 2020 (May 2020 to October 2020), and 16,932 hectares for the third crop 2020 – equivalent to a total of 1,423,613 hectares (103.12% of the irrigation-programmed service area). Cropping intensity achieved was 157.93 percent based on the service area or 177.53 percent based on the FUSA.

There are 9,397 Communal Irrigation Systems (CISs) at the beginning of the year with an aggregate service area of 692,301 hectares and a FUSA of 608,518 ha. In Crop Year 2019-2020, total irrigated area in the CISs was 919,797 ha—equivalent to a cropping intensity of 132.86 percent based on service area or 151.15 percent based on FUSA.

As of December 31, 2020, the total service area developed was 2,006,054.90 hectares (64.12%) compared with the CY 2019 service area of 1,971,746 (63.02%) of the irrigable area of 3,128,631 hectares. The service area is distributed as follows: 933,008.38 hectares are under NIS, 725,793.60 hectares in CIS and 177,506.14 hectares in private irrigation systems and 169,746.78 hectares in other government agency assisted. The remaining irrigable area for development is 1,143,649.16 hectares, which comprises those rice and corn lands with up to 3 percent field slope.

PHYSICAL STATUS OF IRRIGATION PROJECTS
FY 2020 IRRIGATION PROGRAM
As of December 31, 2020

Category	Overall Area (ha)	FY 2020 REVISED TARGETS							FY 2020 ACCOMPLISHMENT							Actual to Date
		CY 2020 Program	Carryover Program					Total CY 2020	CY 2020 Program	Carryover Program					Total CY 2020	
			CY 2019	CY 2018	CY 2017	CY 2016	CY 2015			CY 2019	CY 2018	CY 2017	CY 2016	CY 2015		
I. CY 2020 IRRIGATION PROGRAM																
FOREIGN ASSISTED PROJECTS	New	18,200	-	-	-	-	-	-	-	-	-	-	-	-	-	493
	Resto (ha)	10,000	-	-	2,422	-	1,974	1,169	5,565	-	-	1,237	-	-	725	3,282
	Earth Canal (km)	18.00	-	-	-	-	-	42.84	42.84	-	-	-	-	-	-	88.15
	Canal Lining (km)	78.30	60.00	-	-	-	13.03	104.36	177.38	-	-	-	-	-	-	45.60
	Canal Structures (Unit)	177	217	1	-	-	35	206	459	-	-	-	-	-	-	117
	COCONET (sq. m.)	-	-	-	-	-	-	-	-	-	-	-	-	-	-	83,585
LOCALLY FUNDED PROJECTS	New (ha)	171,476	26,839	2,060	2,426	2,323	1,666	456	35,770	11,019	1,261	1,077	627	570	355	32,119
	Resto (ha)	15,641	10,895	503	99	-	180	-	11,577	6,061	502	9	-	-	-	7,715
	Earth Canal (km)	-	167.40	-	-	-	-	-	167.40	61.68	-	-	1.98	-	1.09	124.64
	Canal Lining (km)	11.75	1,290.12	42.44	11.46	3.13	0.50	-	1,347.66	705.63	37.96	18.04	4.74	4.01	0.42	1,000.52
	Canal Structures (Unit)	52	4,744	110	61	1	12	-	4,928	2,341	88	84	44	38	37	3,469
	HDPE (km)	-	139.53	-	-	-	-	-	139.53	102.01	-	-	-	-	-	102.01
	COCONET (sq. m.)	-	94,965	-	-	-	-	-	94,965	91,316	-	-	-	-	-	91,316
	Concrete Road (km.)	-	67.06	-	3.23	-	-	-	70.29	49.70	-	3.23	-	-	-	86.81
	Gravel Road (km)	2.46	426.17	30.03	2.13	-	11.44	-	469.78	259.65	5.30	2.13	-	-	-	315.63
TOTAL FOR CY 2020 IRRIGATION PROGRAM	New (ha)	189,676	26,839	2,060	2,426	2,323	1,666	456	35,770	11,019	1,261	1,077	627	570	355	32,612
	Resto (ha)	25,641	10,895	503	2,521	-	2,154	1,169	17,142	6,061	502	1,246	-	-	725	10,997
	Earth Canal (km)	18.00	167.40	-	-	-	-	42.84	210.24	61.68	-	-	1.98	-	1.09	212.79
	Canal Lining (km)	90.05	1,350.12	42.44	11.46	3.13	13.53	104.36	1,525.04	705.63	37.96	18.04	4.74	4.01	0.42	1,046.12
	Canal Structures (Unit)	229.00	4,961.00	111.00	61.00	1.00	47.00	206.00	5,387.00	2,341.00	88.00	84.00	44.00	38.00	37.00	3,586.00
	HDPE (km)	-	139.53	-	-	-	-	-	139.53	102.01	-	-	-	-	-	102.01
	COCONET (sq. m.)	-	94,965	-	-	-	-	-	94,965	91,316	-	-	-	-	-	174,901
	Concrete Road (km.)	-	67.06	-	3.23	-	-	-	70.29	49.70	-	3.23	-	-	-	86.81
	Gravel Road (km)	2.46	426.17	30.03	2.13	-	11.44	-	469.78	259.65	5.30	2.13	-	-	-	315.63
II. CONTINUING APPROPRIATIONS																
TOTAL FOR CARRY-OVER PROJECTS	New (ha)	76,890	-	20,057	5,652	7,018	3,958	2,854	39,539	-	15,557	3,664	793	337	1,315	127,992
	Resto (ha)	2,328	-	2,773	1,916	522	986	328	6,525	-	2,449	2,712	441	83	25	73,372
	Earth Canal (km)	-	-	305.68	75.19	23.90	-	90.47	495.24	-	280.89	41.17	6.23	-	16.92	2,536.40
	Canal Lining (km)	17.84	-	765.69	284.71	876.78	112.56	333.11	2,372.85	-	671.24	106.41	41.20	15.43	12.01	846.30
	Canal Structures (Unit)	58	-	3,825	1,587	633	329	548	6,922	-	3,496	915	420	219	25	5,075
	HDPE (km)	-	-	201.75	29.55	3.06	-	-	234.36	-	192.58	6.20	17.22	-	-	216.00
	COCONET (sqm)	-	-	96,829	24,720	-	269,980	-	121,549	-	96,730	5,548	-	99,618	-	201,897
	Concrete Road (km)	-	-	50.50	7.61	36.64	-	-	94.74	-	49.58	2.71	0.85	-	-	53.14
	Gravel Road (km)	-	-	233.62	60.73	9.99	-	-	304.33	-	185.68	11.41	9.59	14.07	-	220.75
TOTAL FOR NIA IRRIGATION DEVELOPMENT PROGRAM	New (ha)	266,566	26,839	22,118	8,078	9,341	5,624	3,310	75,310	11,019	16,818	4,741	1,420	907	1,670	36,576
	Resto (ha)	27,969	10,895	3,276	4,437	522	3,140	1,497	23,667	6,061	2,951	3,958	441	83	750	14,244
	Earth Canal (km)	18.00	167.40	305.68	75.19	23.90	-	133.32	705.48	61.68	280.89	41.17	8.21	-	18.01	409.95
	Canal Lining (km)	107.89	1,350.12	808.13	296.17	879.91	126.09	437.46	3,897.89	705.63	709.20	124.45	45.94	19.44	12.43	1,617.09
	Canal Structures (Unit)	287	4,961	3,936	1,648	634	376	754	12,309	2,341	3,584	999	464	257	62	7,707
	HDPE (km)	-	139.53	201.75	29.55	3.06	-	-	373.89	102.01	192.58	6.20	17.22	-	-	318.01
	COCONET (sqm)	-	94,965	96,829	24,720	-	269,980	-	216,514	91,316	96,730	5,548	-	99,618	-	293,213
	Concrete Road (km)	-	67.06	50.50	10.84	36.64	-	-	165.04	49.70	49.58	5.94	0.85	-	-	106.07
	Gravel Road (km)	2.46	426.17	263.65	62.86	9.99	11.44	-	774.11	259.65	190.98	13.55	9.59	14.07	-	487.83



Republika ng Pilipinas
National Irrigation Administration
(Pambansang Pangasiwaan ng Patubig)
Lungsod ng Quezon

Table 2

SUMMARY OF FINANCIAL STATUS OF IRRIGATION PROJECTS
FY 2020 IRRIGATION PROGRAM (GAA - R.A. No. 11465)
January 1 - December 31, 2020
(All Amount in Thousand Pesos)

PARTICULARS	CY 2020 IRRIGATION PROGRAM						CARRY_OVER FUNDS				REGULAR CY 2020 PROGRAM & CARRY-OVER FUNDS			
	CY 2020 PROGRAM	Allotment Received	NBC 580	Net of SARO	NCA Received	Obligation	Unobligated Allotment as of Dec. 2019	Allotment Received	NCA Received	Obligation	Total CY 2019 Program	Total Available Allotment	NCA Received	Obligation
	(1)	(2)			(3)	(4)	(5)	(6)	(7)	(8)	(9=1+5+6)	(10=2+5+6)	(11=3+7)	(12=4+8)
PROGRAMS														
TOTAL GENERAL ADMINISTRATION AND SUPPORT	9,590,504	9,590,504	-	9,590,504	9,449,718	8,016,997	-	-	-	-	9,590,504	9,590,504	9,449,718	8,016,997
TOTAL SUPPORT TO OPERATIONS	1,068,887	1,068,887	-	1,068,887	241,574	476,366	-	-	-	-	1,068,887	1,068,887	241,574	476,366
OPERATIONS														
PROGRAM 1: Irrigation Systems Restoration Program	9,203,807	9,203,807	(60,000)	9,143,807	5,087,813	8,754,787	1,719	-	135,858	1,719	9,205,526	9,145,526	5,223,670	8,756,506
Sub-Program 1: National Irrigation Systems (NIS)	6,641,645	6,641,645	(60,000)	6,581,645	3,758,516	6,317,171	1,719	-	135,858	1,719	6,643,364	6,583,364	3,894,374	6,318,891
Sub-Program 2: Communal Irrigation Systems (CIS)	2,370,348	2,370,348	-	2,370,348	1,198,226	2,252,739	-	-	-	-	2,370,348	2,370,348	1,198,226	2,252,739
Sub-Program 3: Other Irrigation Systems	191,814	191,814	-	191,814	131,071	184,876	-	-	-	-	191,814	191,814	131,071	184,876
PROGRAM 2: Irrigation Systems Development Program	16,414,091	16,414,091	(887,600)	15,526,491	4,998,445	13,641,457	1,007,015	85,554	477,408	1,077,981	17,506,660	16,619,060	5,475,853	14,719,438
Sub-Program 1: New National Irrigation Systems	6,346,386	6,346,386	(767,600)	5,578,786	1,506,827	4,613,902	739,837	-	689,698	730,330	7,086,223	6,318,623	2,196,525	5,344,232
Sub-Program 2: Establishment of Pump Irrigation Systems	2,508,542	2,508,542	-	2,508,542	389,625	2,419,455	49,403	85,554	(391,442)	132,754	2,643,499	2,643,499	(1,817)	2,552,209
Sub-Program 3: Small Reservoir Irrigation Systems	1,440,625	1,440,625	(120,000)	1,320,625	292,156	816,759	217,775	-	179,152	214,898	1,658,400	1,538,400	471,308	1,031,657
Sub-Program 4: Special Irrigation Systems	5,081,503	5,081,503	-	5,081,503	2,113,782	4,808,689	-	-	-	-	5,081,503	5,081,503	2,113,782	4,808,689
Sub-Program 5: Extension/Expansion of Existing Irrigation Systems	450,603	450,603	-	450,603	228,410	405,973	-	-	-	-	450,603	450,603	228,410	405,973
Sub-Program 6: Other Irrigation Systems	586,432	586,432	-	586,432	467,646	576,679	-	-	-	-	586,432	586,432	467,646	576,679
TOTAL FOR OPERATIONS	25,617,898	25,617,898	(947,600)	24,670,298	10,086,258	22,396,244	1,008,734	85,554	613,266	1,079,700	26,712,186	25,764,586	10,699,524	23,475,944
SUB-TOTAL FOR FY 2020 PROGRAM	36,277,289	36,277,289	(947,600)	35,329,689	19,777,550	30,889,606	1,008,734	85,554	613,266	1,079,700	37,371,577	36,423,977	20,390,816	31,969,306
TOTAL FOR SECTION 7	-	467,387	-	467,387	49,881	335,787	-	-	-	-	467,387	467,387	49,881	335,787
TOTAL FOR FY 2020 PROGRAM	36,277,289	36,744,676	(947,600)	35,797,076	19,827,431	31,225,393	1,008,734	85,554	613,266	1,079,700	37,838,964	36,891,364	20,440,697	32,305,094
II. CONTINUING APPROPRIATIONS														
TOTAL FOR CONTINUING APPROPRIATIONS	-	-	-	-	-	-	2,680,106	(44,400)	7,208,460	2,225,318	2,635,706	2,635,706	7,208,460	2,225,318
TOTAL FOR OTHER SOURCES	-	-	-	-	-	-	707,970	14,819	578,341	721,708	722,789	722,789	578,341	721,708
TOTAL FOR CONTINUING APPROPRIATIONS							3,388,076	(29,581)	7,786,801	2,947,025	3,358,495	3,358,495	7,786,801	2,947,025
GRAND TOTAL FOR CY 2019 IRRIGATION PROGRAM	36,277,289	36,744,676	(947,600)	35,797,076	19,827,431	31,225,393	4,396,811	55,973	8,400,067	4,026,725	41,197,460	40,249,860	28,227,498	35,252,119

NOTE:

CARRY-OVER FUNDS includes balances from CY 2020 Regular Appropriations
Unaudited Financial Status as of June 30, 2020

**A. PLANNING AND
DEVELOPMENT OF
IRRIGATION PROJECTS**

I. Project Preparation

Irrigation development depends on the sustainability of project preparation which includes the conduct of feasibility study and detailed engineering study prior to construction or project implementation. In line with these activities, funds for Feasibility Study and Detailed Engineering (FS&DE) are programmed annually.

For CY2020, the total budgetary allocation of ₱ 776.912 Million programmed to support project preparation particularly the conduct of feasibility study and detailed engineering study for Small Irrigation Projects (SIPs), Small Reservoir Irrigation Projects (SRIPs), and National Irrigation Projects (NIPs)– Multipurpose Projects and Pump Irrigation Projects.

There are 141 projects completed for feasibility study and 83 projects for detailed engineering design as of December 31, 2020. Most ongoing FS&DE are SRIPs and NIPs that require more than a year to complete the studies. (Annex D).

NIA Flagship Infrastructure Projects

NIA remains at the forefront of the Administration's objective in accelerating infrastructure development and inclusive development in the countryside. In pursuing these objectives, nine (9) major projects are included in the list of Flagship Infrastructure Projects namely (1) Chico River Pump Irrigation Project; (2) Jalaur River Multipurpose Project Stage II; (3) Lower Agno River Irrigation System Improvement Project; (4) Balog-Balog Multipurpose Project Phase II; (5) Malitubog-Maridagao Irrigation Project Stage II; (6) National Irrigation Sector Rehabilitation and Improvement Project; (7) Bohol Northeast Basin Multipurpose

Dam Project; (8) Panay River Basin Integrated Development Project; and (9) Kabulnan 2 Multipurpose Irrigation Project.

II. Project Implementation

A. Foreign-Assisted Projects (FAPs)

Under the CY2020 Irrigation Program as per GAA - R.A. No. 11465, NIA implemented 3 continuing FAPs. These are the (1) Chico River Pump Irrigation Project; (2) Jalaur River Multipurpose Project Stage II in Iloilo; and (3) National Irrigation Sector Rehabilitation and Improvement Project (covering Regions 1, 3, 4-A, 4-B, 6, 10, 11, 12 and 13).

1. Chico River Pump Irrigation Project

The Chico River Pump Irrigation Project (CRPIP) is a flagship infrastructure project financed by China under the Duterte Administration's "Build Build Build" program with a total project cost of ₱ 4.372 B in which ₱ 3.135 B is loan grant from the Peoples's Republic of China thru the China Export Import Bank and ₱ 1.237 GOP counterpart. It is a multi-year project originally scheduled for three (3) years of implementation starting September 7, 2018 to December 31, 2021.

The project will provide substantial and timely water supply for irrigation to support agricultural development. It covers the Municipality of Pinulpuk, Kalinga in the CAR and the Municipality of Tuao and Piat of Cagayan Province, Region 2 with a total service area of 8,700 hectares.

More components of the project consist of the Construction of Pump House with six (6) units of electric driven motor pumps and appurtenances, such as 30 km Transmission Line

PLANNING AND DEVELOPMENT OF IRRIGATION PROJECTS

and 69 kV Substation, Construction of 33.60 km Main Canal, 100.48 km Lateral Canals, Construction of 487 units Canal Structures and Terminal Facilities (501 ASSY Steel Gates), Project Facilities and Access Roads.

The Project had an initial fund of ₱ 50 M funded under GAA implemented on CY2017 for the construction of PMO Admin Building, Access Road and Pre-Construction Works which have been undertaken and completed thru Contract and Force Account Works.

On the first year of implementation of the project of CY 2018, an allocation of ₱ 670.308 M was approved to cover the Contractors Temporary Work and Mobilization, Excavation of Pump House and initial Clearing and Grubbing of Canal. Other scope of works were implemented which includes the construction of Staff House, Motor Pool as well as the construction of Phase II of Access Roads. The CY 2018 Program of Works is 100% completed as of December 2018.

The CY 2019 allocation amounting to ₱ 852.0 M was allocated for the project on its second year of implementation. The programmed activities for CY 2019 cover the construction of Pump House, Tunnel Works, Canalization Works and Canal Structures. Repair of existing Barangay road used as service roads during the construction was implemented through Local Minor Contract. CY 2019 Program of Works is 100% completed as of December 2019.

For CY 2020, an allocation of ₱ 1.448 B was allocated for the continuation of the construction of Pump House including its appurtenances such as 30 km Transmission Line and 69kV Substation, Tunnel Works, canalization works and canal structures. The CY 2020 accomplishments in the project includes the construction of Pumphouse Structure,

Transmission Line, construction of the outer lining of Tunnel 1 and Tunnel 2 with a total length 1.9 km, construction of canal and canal structures with a total percentage of 62.22% actual accomplishment as of December 31, 2020. Since the commencement of the project, the physical accomplishment is consistently ahead of schedule. However, the progress of project implementation was undeniably slumped by the adverse effect of Covid-19 pandemic and unfavorable weather conditions prevailing in the project site. Accordingly, the project was suspended for 49 calendar days from March 18, 2020 to May 5, 2020 due to the outbreak of Covid-19 pandemic and recorded 73 unworkable days due to the unfavorable weather conditions. The actual overall project accomplishment at the end of CY 2020 was 55.49% compared to the target of 58.99% with 3% negative slippage.

2. Jalaur River Multipurpose Project Stage II (JRMP-II)

The biggest irrigation development project of the Province of Iloilo surpasses its overall target in 2020 despite the challenges and adversities brought by the global health crisis. This as the Project Management Office (PMO) of Jalaur River Multi-Purpose Project Stage II (JRMP II) reported that it has reached an overall accomplishment of 41.90% as of December 31, 2020. This figure is way ahead of its projected target of 29.55%.

National Irrigation Administration (NIA) recognizes the immense need for the timely completion of JRMP II given present circumstances. The operationalization of the project means inclusive growth in the Province of Iloilo specifically in the agriculture sector which is not spared by the devastating effect of the Coronavirus Disease (COVID-19).

In 2020, construction of coffer dam of the Jalaur High Dam was completed following the successful diversion of Jalaur River to the 300-meter tunnel. It used the Roller Compacted

Concrete (RCC) method of construction, the same procedure to be used for the construction of the Jalaur High Dam and Jalaur Afterbay Dam. Penstock for the 6.6 megawatt hydroelectric power will also be located in the High Dam.

As of the last month of 2020, rock line cleaning of the dam axis as well as earthworks and drillings were undertaken in the High Dam area.

On the other hand, Daewoo Engineering and Construction (E&C), the contractor of the project, stayed true to their words of having simultaneous construction activities in all of the major structures of JRMP II. One kilometer downstream of the impounding dam, construction activities for the Jalaur Afterbay Dam had also commenced. It started with clearing operations and the construction of another 140-meter river diversion tunnel. The said 39-meter dam will be the regulating structure of the project. Once river water is successfully diverted, it will then give way to the construction of the Afterbay Dam.

Meanwhile, construction of the 80-kilometer High Line Canal has also commenced. It will traverse nine (9) municipalities in the Province of Iloilo including Calinog, Lambunao, Janiuay, Badiangan, Cabatuan, Alimodian, San Miguel, Oton and Tigbauan. Said canal will serve as conveyance structure of the project delivering water from the Afterbay Dam to the main canals in different zones covered by the project. It will also be the source of the one cubic meter per second of bulk water supply which will address the water problem of Iloilo City and nearby municipalities.

As the main structures of the project are located in the ancestral domain of Panay Bukidnon Indigenous Peoples (IP) community in Calinog, Iloilo, the project has established a Resettlement Site in Sitio Agburi, Cahigon, Calinog. It will be a self-sustaining relocation site

with its own livelihood program and basic community infrastructures. Thirty five (35) IP families will be relocated in the said area with house design approved by the IP community which showcases their culture and tradition. Said JRMP II Resettlement Site will be financed by the National Housing Authority (NHA) and NIA. As of December 2020, a model house is already underway. A Memorandum of Agreement by and between NIA and the NHA was inked on August 3, 2020.

JRMP II is not just focused on the infrastructure aspect of the project but also on its social and environmental component. Since it is a tied-loan with the Economic Development Cooperation Fund (EDCF) of South Korea, the project is constantly monitored by the Environmental and Social Monitoring Team (ES Team) commissioned by the loan provider. They also cover the technical aspect of JRMP II. For last year, they had only one actual mission to the Philippines in February due to the COVID-19 pandemic but virtual meetings and due diligence missions are continuing.

Once JRMP II is completed, it will boost Iloilo Province and Iloilo City economically. More importantly, it will uplift the agriculture industry of the province with its 31,840 hectares of farmlands to be irrigated. The project is envisioned to be completed in 2023.

3. National Irrigation Sector Rehabilitation and Improvement Project (NISRIP)

The National Irrigation Sector Rehabilitation and Improvement Project (NISRIP) is funded by the Japan International Cooperation Agency (JICA) under Loan Agreement No PH-
₱ 254. The main purpose of NISRIP is to increase food production by strengthening the irrigation sector to contribute to the rice self-sufficiency program of the government. This will be realized through: a) restoration of the original functions of the National Irrigation Systems

PLANNING AND DEVELOPMENT OF IRRIGATION PROJECTS

(NIS), b) implements Irrigation Management Transfer (IMT) and the NIS to enable management to improve operation and maintenance (O&M) to be sustainable, and c) agricultural support for farmers to further increase productivity. The NISRIP was originally proposed to cover 11 NISs subprojects with a Firm-Up Service Area (FUSA) of 35,670 has. With an original project cost of ₱ 4.007 Billion and implementation period from 2012 to 2019, co-implemented by the NIA for civil works and institutional development component and PhilRice for the Agri-support component. NISRIP's request for 1. Extension of loan validity from the original closing date of July 3, 2019 to July 3, 2021; 2. Implementation from February 2012 - June 30, 2019 to February 2012 - June 30, 2021; 3. Reduction in scope from the total firm-up service area (FUSA) of 35,670 hectares, and non-pursuit of the proposed additional scope of civil works; and 4. Change in the total project cost from ₱ 4,007.14 million to ₱ 3,134.45 million, with reallocation of funds to the Unavailable Balance category amounting to JPY586.50 million was approved by the NEDA Board ad referendum on July 1, 2019 of the Investment Coordination Committee – Cabinet Committee's (ICC-CC).

During this year, the COVID-19 pandemic started in March 2020 which hampers and impeded the implementation of projects nationwide. Despite of the implementation limitation problems encountered from this situation; the project finished 2020 with an accomplishment of 79.81%.

PLANNING AND DEVELOPMENT OF IRRIGATION PROJECTS

Overall Accomplishment (as of December 31, 2020)

COMPONENTS	Approved Program of Work (P'000)	Approved Revised Project Cost (P'000)	Physical Accomplishment (%)	Financial Accomplishment (%)
CIVIL WORKS	2,501,720.00	2,115,867.28	82.43	59.13
IDP	93,480.00	159,578.37	66.23	48.52
AGRI SUPPORT (PHILRICE)	161,810.00	95,711.63	93.86	93.86
O&M	291,660.00	259,661.59	91.58	87.83
CONSULTANCY	373,330.00	376,651.01	82.02	77.94
TAXES	220,860.00	15,233.44	99.76	97.32
CONTINGENCY	364,280.00	111,746.67		0.00
Total	4,007,140.00	3,134,450.00	79.81%	62.37

Table (1). Overall accomplishment as of December 31, 2020

The PMO conducted series of coordination meetings and assessment involving NIA's top management, NISRIP PMO and Consultants, RIO/IMO/CMU, and Contractors through online virtual meetings to settle the issues and arrived with the immediate action plans for the standing situations therein. Unfortunately, some commitments were not realized due to the reduced the capability of the field implementers to vigorously fulfill the activities on the ground, including the preparation and processing documentations and billings which resulted to minimal accomplishment and disbursement from the project.

On the financial aspect, the project has accomplished only 62.37%. The PMO has on the other hand has conducted Assessment and sent reminder letters to contractors to submit progress billings.

B. Locally-Funded Projects (LFPs)

Some 67 LFPs were implemented under the CY2020 Program. Total approved allocation for these projects was ₱ 33.934 B—equivalent to 93.54 percent of the approved budget for NIA. Allotment through Agency Budget Matrix (ABM) was ₱ 33.454 B or 100

percent of the allocation. Adding the ₱ 4.309 B unobligated balance from previous year's allotment, this year's available allotment was ₱ 37.763 B and total obligation incurred was ₱ 32.977 B.

Physical targets of these projects under the CY2020 Program were: generation of 26,839 ha of new area, restoration of 10,895 ha, repair of 167.40 km earth canal, 1,290.12 km concrete lined canal, 139.53 km HDPE, 94,965 sq. m. coconet slope protection area, 67.06 km concrete road, 426.17 km gravel road and 4,744 unit of canal structures.

Physical accomplishments under the CY2020 Program were: 11,019 ha new area generated, 6,061 ha of area restored and repair of 61.68 km earth canal, 705.63 km of canal lining, 102.01 km HDPE, 91,316 sq. m. coconet slope protection area, 49.70 km concrete road, 259.65 km gravel road and 2,341 unit of canal structures. Carry-over projects generated 3,890 ha new area, restore 511 ha and repair 3.06 km earth canal, 65.16 km of canal lining, 3.23 km concrete road, 7.44 km gravel road and 291 unit of canal structures.

Small Reservoir Irrigation Projects (SRIP)

SRIPs are multi-oriented projects that require the identification, investigation, validation, feasibility studies, detailed design and construction of a Reservoir Dams and appurtenant structures to provide a year-round irrigation. Other benefits derived from completed SRIPs include flood control, aquaculture, hydropower, domestic water supply and recreational facilities for local tourism.

For CY2020, an amount of ₱ 1.321 B is allotted to SRIP for the implementation of sixteen (16) projects nationwide as follows.

PLANNING AND DEVELOPMENT OF IRRIGATION PROJECTS

NAME OF PROJECT		CY2020 ALLOCATION (P'M)	Overall Status (%)
1	Bayaoas SRIP, Region 1	20.000	6.23
2	Dumuloc SRIP, Region 1	100.000	4.18
3	Gaco SRIP, Region 1	126.000	6.60
4	Sulvec SRIP, Reg. 1	50.000	60.34
5	Bulo SRIP, Region 3	50.000	77.16
6	Balbalungao SRIP, Region 3 UPRIIS	170.000	41.85
7	Macalelon SRIP, Region 4A	170.955	51.79
8	Ibingan SRIP, Region 5	84.170	57.10
9	Bayuyan SRIP, Region 6	100.000	34.12
10	Benliw SRIP, Region 7	27.500	84.32
11	Cabano SRIP, Region 6	100.000	6.00
12	Hibale SRIP, Region 7	100.000	19.33
13	Mabini-Cayacay SRIP, Region 7	27.500	89.96
14	Bonot-Bonot SRIP, Region 7	27.500	66.86
15	Calunasan SRIP, Region 7	50.000	35.77
16	Tulunan SRIP, Region 12	117.000	12.30
TOTAL		1,320.625	

Comprehensive Agrarian Reform Program (CARP) Regular- Locally funded projects

There are fifty-two (52) projects implemented this CY2020, with a target area of 1,296 ha new area and 772 ha for restoration to benefit around 1,357 farmer beneficiaries. There were twenty-six (26) projects completed with generated new area of 745 ha and 311 ha of restored area. Repair works dwelt on 0.57 km of earth canal, 15.14 km of canal lining, 4.87 km of HDPE pipes and 104 unit of canal structures. The remaining twenty-six (26) projects are expected for completion on or before June 30, 2021.

Thirty-three (33) carry-over projects were completed as of December 31, 2020 with an area of 647 ha new and 142 ha restored.

For CY2020, the approved allocation was ₱ 586.432 M, with incurred obligation of ₱ 576.679 M and unobligated balance from previous years allocation of ₱ 3.793 M.

C. Continuing Appropriations

Other than the projects implemented under the CY2020 Program, 100 carry-over projects were pursued. Unobligated balances made available during the year under review were used in the implementation of these carry-over projects. These projects generated 21,666 ha new area, restore 5,710 ha and repair 345.21 km earth canal, 846.30 km of canal lining, 201,897 sq. m. coconet slope protection area, 216.00 km HDPE, 53.14 km concrete road, 220.75 km gravel road and 5,075 unit of canal structures. (Table 1)

III. Irrigation Development

The total service area developed as of December 31, 2020 was 2,006,054.90 ha equivalent to 64.12 percent of the irrigable area of 3,128,631 ha. Of this area, 933,008.38 ha are under NIS, 725,793.60 ha in CIS and 177,506.14 ha in private irrigation systems and 169,746.78 ha in other government agency assisted. The remaining irrigable area for development is 1,143,649.16 ha, which comprises those rice and corn lands with up to 3 percent slope. (Annex E)

**B. OPERATIONS
AND
MAINTENANCE OF
IRRIGATION SYSTEMS**

OPERATIONS AND MAINTENANCE OF IRRIGATION SYSTEMS

I. System Management

a. National Irrigation Systems (NISs)

NIA operated and maintained 247 National Irrigation Systems (NISs) nationwide with an aggregate service area of 901,406 ha and a firm-up service area (FUSA) of 801,899 ha.

For this crop year the irrigation-programmed service area is 1,380,584 ha. Irrigated area was 688,052 ha during the dry season 2019 (November 2019 to April 2020), 718,628 ha during the wet season 2020 (May 2020 to October 2020), and 16,932 ha for the third crop 2020 – equivalent to a total of 1,423,613 ha (103% of the irrigation-programmed service area). Cropping intensity achieved was 157.93 percent based on the service area or 177.53 percent based on the FUSA (Annex F).

b. Communal Irrigation Systems (CISs)

There are 9,397 communal irrigation systems (CISs) at the beginning of the year with an aggregate service area of 692,301 ha and a FUSA of 608,518 ha. In Crop Year 2019-2020, total irrigated area in the CISs was 919,797 ha—equivalent to a cropping intensity of 132.86 based on service area or 151.15 percent based on FUSA (Annex G).

II. Institutional Development

For CY2020, there are 3,379 IAs covering an area of 496,943 hectares with farmer beneficiaries of 423,084 strengthened. IA strengthening is being done to uplift the performance of IAs. Necessary capability building programs in relation to operation and maintenance aspect of irrigation system as well as leadership and management of IAs affair were conducted. Likewise, these IAs were provided skills by having them attend a strategic

OPERATIONS AND MAINTENANCE OF IRRIGATION SYSTEMS

planning and policy formulation where IA officers and leaders prepare their Vision, Mission and Objective, programs and projects and formulate some policy in consonance with their VMO and projects.

The number of IAs sustained was 3,832 covering an area of 813,968 ha with 669,972 farmer beneficiaries. Activities provided for the sustenance of these IAs includes Review and Planning Sessions, Technology Enhancement Program for the officers and leaders to cope up to the present needs of their members and IAs to other Government Agencies and NGOs that provide agricultural support through linkages and assistance program.

A total of 9,602 IAs and 189,457 participants were provided with capacity building programs in the form of trainings, seminars, workshops, consultation meetings and other activities to enhance their management capabilities. Training provided includes, Leadership and Management, Financial Management System, System Management Training, Water Management, Operation and Maintenance, Strategic Planning and Policy Formulation, Work Attitude and Values Enhancement, Technology Enhancement Program, Gender Based Effectiveness skills training and Team Building.

Furthermore, 1,522 batches of capacity building programs were conducted, benefiting 29,601 NIA staff. Capacity building focused on enhancing the skills, knowledge and right attitude of participants in supervising, monitoring and managing the implementation of IDP and the conduct of trainings to IAs. These are more in the form of facilitators and/or trainers training.

NIA also facilitated the provision of assistance programs and support services aside from its internal resources through linkages with other government and non-

OPERATIONS AND MAINTENANCE OF IRRIGATION SYSTEMS

government organizations (NGO). Hence, 8,552 IAs with 456,637 FBs received numerous benefits from these programs and services.

As of December 31, 2019, there are already 10,921 IAs organized covering an area of 1,574,621 hectares with 1,271,371 farmer beneficiaries wherein 1,101,806 of these farmer applied for membership to their respective IAs either in the national or in communal system. Out of the 10,921 organized IAs, 10,288 were registered to the government which is about 94.20%. There are 8,402 IAs entered into O&M contract with the NIA wherein 2,915 are from NIS and 607 from NIP/SIS/SRIS. Presently 5,325 CIS had been turnover to organized farmers of the same number covering an area of 528,421 hectares with farmer beneficiaries of 457,497. (See Annex H)

III. Equipment Management

NIA maintained in operating condition 3,201 units of equipment (A1+A2) of heavy, light/transport, other support and special equipment in support to the O&M and/or rehabilitation of National Irrigation Systems (NIS) and construction of both national and communal irrigation projects. The total number of A3 equipment or non-operable equipment needing repair is 622 units and the total number of equipment recommended for disposal is 1,382 units. The overall total inventory of equipment as of December 31, 2020 was 5,205 units (See Annex I).

Equipment Management Information System (EMIS) is a tool for the inventory of all NIA Equipment Nationwide. It is updated based on the latest actual inventory and EM-12B reports submitted by field offices every quarter.

OPERATIONS AND MAINTENANCE OF IRRIGATION SYSTEMS

NIA have generated an income amounting to ₱ 275.62 M from the equipment rental for CY2020.

For CY2020, NIA have repaired a total of 230 units of O&M Equipment with repair expenses amounting to ₱ 54.955 M from the Equipment Repair Fund per MC No. 50 series of 2012.

IV. Irrigation Engineering Center (IEC)

The Irrigation Engineering Center (IEC) activities in CY 2020 include implementation of the Farmland Geographic Information System (FGIS) in National Irrigation Systems, monitoring of Climate Change Adaptation Works and Coconet Slope Protection, crafting of procedural interventions, conduct of technical training and the processing of reactivation of IEC Soils and Water Laboratory intended for research purposes, water quality monitoring and soil and materials testing.

Establishment of Farmland Geographic Information System (FGIS)

The NIA, through the assistance of Japan International Cooperation Agency (JICA) has introduced and initiated the preparation of Parcellary Maps through the method of Geographic Information System (GIS) and the establishment of Farmland Geographic Information System (FGIS) as digital platform in year 2014-2017. Activities under said NIA-JICA Technical Technical Cooperation Project 3 (TCP-3) is currently being replicated to other national irrigation systems and was enhanced to include ISF Record, Water Apportioning/Water Delivery and Distribution (WDD), Assets Management, Devastation/Disaster Assessment, Hazard map, Diversified Crops, Indigenous People and Project Monitoring. In CY 2018, the project has an allocation of ₱ 125.528 Million covering 62 NISs with a total area of 126,006.85 has. The scope of the project

OPERATIONS AND MAINTENANCE OF IRRIGATION SYSTEMS

includes digitization of parcellary maps, Farmland Database development and enhancement, conduct of training/workshop for the developed software and procurement of survey and IT Equipment.

As of 31 December 2020, the overall physical and financial accomplishment for the Project (CY2018 Program) is 99.24% and 92.14% respectively.

Climate Change Adaptation Works (CCAW) and Coconet Slope Protection Works

The IEC has also been monitoring activities under Climate Change Adaptation Works (CCAW) and Coconet Slope Protection Works being implemented in the Regional Irrigation Offices (RIOs). For CY 2020, the CCAW has an approved budget of ₱ 998.712 M and was implemented in 127 NISs. As of December 31, 2020, physical and Financial accomplishment is 78.98% and 48.083% respectively.

NIA has continuously promoting the use of coco coir thru the Coconet Slope Protection Works in NIS and CIS which in turn increase the income of coconut farmers.

As of December 31, 2020, the agency has accomplished installation of 91,316 sq.m. of Coconet slope protection with physical and financial accomplishment of 87.02% and 54.31% for NIS and 100% for both physical and financial accomplishment in CIS.

Diversified Cropping

Crop Diversification Strategy was adopted through issuance of Memorandum Circular No. 63 s. 2019, to promote and improve agricultural development while adopting to climate

OPERATIONS AND MAINTENANCE OF IRRIGATION SYSTEMS

change. The Main scheme of said strategy includes planting of Cash Crop after rice/main crop and planting of intercrops (permanent or Cash crops).

As of December 31, 2020, the total area planted with diversified crops are 41,521.86 ha (wet) and 74,804.37 ha (dry) with a total of 35,863 (wet) and 94,500.62 (dry) farmer-beneficiaries. The top crops planted are corn, mungbean, okra, tomato, eggplant, winged beans, squash, upo, watermelon, peanut, cassava, pineapple, bananas and other green leafy vegetables in Regions 1, MARIIS, UPRIIS, 4B, 7, 10, 11 and 12 which has the largest planted with diversified crops.

Methodology-enhancing directives were circularized in CY 2020, aiming to standardize processes and update policy directions relevant to the activities under Operation and Maintenance.

- a. Memorandum No. 15 s. 2020 - "Comprehensive Strength Test for Concrete Specimens"
- b. Memorandum Circular No. 31 s. 2020 – "Revised Guidelines on the issuance by NIA of Certificates Pertinent to Land Use Conversion (LUC), Land Use Reclassification (LUR), and Land Use Exemption (LUE)"
- c. Memorandum Circular No. 117 s. 2020 – "Checklist of Requirement for the Issuance of Certificates Pertinent to Land Use Conversion (LUC), Land Use Reclassification (LUR), and Land Use Exemption (LUE)"
- d. Memorandum Circular No. 132 s. 2020 – "Filing and Field Inspection Fees for the Issuance of Certificates of Irrigation Coverage (CIC) and Certificate of Non-Irrigation Coverage (CNIC)"
- e. Memorandum Circular No. 143 s. 2020 – "Virtual Private Network (VPN) Server Installation under Farmland Geographic Information System (FGIS)"
- f. Memorandum Circular No. 186 s. 2020 – "Guidelines on Materials Testing and Quality"

OPERATIONS AND MAINTENANCE OF IRRIGATION SYSTEMS

Conduct of Technical Training

A 22-day Comprehensive Seminar/Workshop on Material Testing was Conducted last March 2020 at Pantabangan Hotel & Resort, Nueva Ecija aiming to enhance the knowledge of the Field Implementors on soil, concrete and other materials testing technology , effective laboratory/field testing on construction materials and quality control.

For the technology enhancement, the Dam Information Management System (DIMS) Project was conceptualized to enhance the existing dam monitoring introducing a circulated real-time monitoring of data (rainfall, water level data, gate openings, warning announcements, strong motion seismic data, deformation inputs) wherein all data gathered from dam instrumentations will be consolidated and will be integrated into one common graphic interface.

IEC Soils and Water Laboratory: Processing of the Reactivation

Aiming towards NIA with in-house testing of soil and materials for the construction of its projects and delivering quality irrigation water to farmlands, the IEC Soils and Water Laboratory upon its reactivation will be utilized for the conduct of reseach activities including soil and water analysis for quality control and monitoring purposes. Said initiative could also be a source of additional income of the Agency when its services is extended to clients outside NIA.

As of December 31, 2020, the equipment for the Soils and Materials Testing Laboratory which include equipment for soil analysis and classification, soil density and field density test has already been procured and awarded to the lowest complying bidder while the procurement for additional equipment for Chemical (Water) Laboratory is already in post-qualification stage.

ANNEXES



Republika ng Pilipinas
National Irrigation Administration
 (Pambansang Pangasiwaan ng Patubig)
 Lungsod ng Quezon

FY 2020 APPROVED IRRIGATION PROGRAM (GAA - R.A. No. 11465)

PARTICULARS	Allocation (P'000)	Modified Budget (P'000)	Revised Budget (P'000)	T A R G E T S										
				New Area (Ha)	Restore Area (Ha)	Repair & Rehabilitation Works							Farmer Beneficiaries (No)	Jobs Generation (No)
						Earth Canal (Km)	Concrete Lined Canal (Km)	Canal Structures (No)	HDPE Pipe (Km)	Coconet (Sqm)	Concrete Roads (Km)	Gravel Roads (Km)		
GENERAL ADMINISTRATION AND SUPPORT														
1. Operating Subsidy	5,759,150	-	5,759,150	-	-	-	-	-	-	-	-	-	-	-
2. Payment of NIA's Obligation to CE-Casecnan for Water delivery fee	3,546,506	-	3,546,506	-	-	-	-	-	-	-	-	-	-	-
3. Operation and Maintenance of NIS Pump IS	284,848	-	284,848	-	-	-	-	-	-	-	-	-	-	-
TOTAL GENERAL ADMINISTRATION AND SUPPORT	9,590,504	-	9,590,504	-	-	-	-	-	-	-	-	-	-	-
SUPPORT TO OPERATIONS														
1. Payment for ROW, Completion Works & Unpaid Claims and	110,000	-	110,000	-	-	-	-	-	-	-	-	-	-	-
2. Feasibility Study, Detailed Eng'g. & Pre-Eng'g. Activities (FSDE)	776,912	-	776,912	-	-	-	-	-	-	-	-	-	-	-
3. Irrigation Management Transfer Support Services (IMTSS)	94,800	-	94,800	-	-	-	-	-	-	-	-	-	-	-
4. Establishment of Farmland Geographic Information System (GIS)	87,175	-	87,175	-	-	-	-	-	-	-	-	-	-	-
TOTAL SUPPORT TO OPERATIONS	1,068,887	-	1,068,887	-	-	-	-	-	-	-	-	-	-	-
OPERATIONS														
PROGRAM 1: Irrigation Systems Restoration Program	9,203,807	(60,000)	9,143,807	-	9,112	85.20	673.97	1,985	43.51	91,006	49.90	259.23	92,201	36,990
Sub-Program 1: National Irrigation Systems (NIS)	6,641,645	(60,000)	6,581,645	-	5,642	76.41	414.58	761	2.52	65,841	49.78	254.95	62,275	26,737
Sub-Program 2: Communal Irrigation Systems (CIS)	2,370,348	-	2,370,348	-	3,470	6.44	250.67	1,185	37.61	25,165	0.12	4.28	28,152	9,101
Sub-Program 3: Irrigation Systems	191,814	-	191,814	-	-	2.35	8.72	39	3.38	-	-	-	1,774	1,152
PROGRAM 2: Irrigation Systems Development Program	16,414,091	(887,600)	15,526,491	29,019	1,518	161.75	887.81	3,603	142.45	-	42.87	65.99	22,284	85,964
Sub-Program 1: New National Irrigation Systems	6,346,386	(767,600)	5,578,786	6,714	375	19.24	162.00	489	5.00	-	40.83	41.92	3,577	38,084
Sub-Program 2: Establishment of Pump Irrigation Systems	2,508,542	-	2,508,542	7,617	-	40.17	265.68	364	15.56	-	-	-	5,193	14,090
Sub-Program 3: Small Reservoir Irrigation Systems	1,440,625	(120,000)	1,320,625	-	-	-	44.91	42	-	-	0.24	5.28	-	8,421
Sub-Program 4: Special Irrigation Systems	5,081,503	-	5,081,503	11,976	95	84.37	311.46	1,971	106.95	-	1.80	18.79	10,603	19,708
Sub-Program 5: Extension/Expansion of Existing Irrigation Systems	450,603	-	450,603	1,484	-	17.51	46.02	300	8.07	-	-	-	1,396	2,142
Sub-Program 6: Other Irrigation Systems	586,432	-	586,432	1,228	1,048	0.46	57.74	437	6.87	-	-	-	1,515	3,519
TOTAL FOR OPERATIONS	25,617,898	(947,600)	24,670,298	29,019	10,630	246.95	1,561.78	5,588	185.96	91,006	92.77	325.22	114,485	122,954
GRAND TOTAL	36,277,289	(947,600)	35,329,689	29,019	10,630	246.95	1,561.78	5,588	185.96	91,006	92.77	325.22	114,485	122,954

Approved FY 2020 IRRIGATION PROGRAM (GAA - R.A. No. 11465)

PHYSICAL STATUS OF IRRIGATION PROJECTS
FY 2020 IRRIGATION PROGRAM
As of December 31, 2020

CLASSIFICATION/PROJECTS/PROVINCE/REGION	Overall Area (ha)	CY 2020 Program	FY 2020 REVISED TARGETS					Total CY 2020	FY 2020 ACCOMPLISHMENT					Total CY 2020	Actual to Date *	Overall Project Status (%)	
			Carryover Program						Carryover Program								
			CY 2019	CY 2018	CY 2017	CY 2016	CY 2015		CY 2019	CY 2018	CY 2017	CY 2016	CY 2015				
I. FY 2020 PROGRAM																	
GENERAL ADMINISTRATION AND SUPPORT 1. Operation Subsidy 2. Payment of NIA's Obligation to CE-Casencan for Water delivery 3. Operation and Maintenance of NIS Pump IS																50.23	
SUPPORT TO OPERATIONS 1. Payment for ROW, Completion Works & Unpaid Claims and Damages of Completed Projects 2. Feasibility Study & Detailed Engineering (FSDE) and Pre-Engineering Activities of Various Projects 3. Irrigation Management Transfer Support Services (IMTSS) 4. Establishment of Farmland Geographic Information System (GIS)																- 24.77 28.45 49.14	
OPERATIONS																	
PROGRAM 1: Irrigation Systems Restoration Program																	
Sub-Program 1: National Irrigation Systems																	
1. Restoration of National Irrigation Systems Nationwide	Resto (ha) Earth Canal (km) Canal Lining (km) Canal Structures (Unit) HDPE (km) Concrete Roads (km.) Gravel Road (km)	Annual Program 5,920 3.56 81.35 200 5.44 - 11.25						5,920 3.56 81.35 200 5.44 - 11.25	2,261 3.08 56.14 84 5.10 - 2.63						2,261 3.08 56.14 84 5.10 - 2.63	2,261 3.08 56.14 84 5.10 - 2.63	71.35
2. Agos RIS Improvement Project Quezon, Region 4A	Canal Lining (km) Canal Structures (Unit) HDPE (km) Concrete Roads (km.) Gravel Road (km)	4.66 27 2.35 0.72 -	14.00 19 - 3.22					18.65 46 2.35 0.72 3.22		8.41					8.41 - - - -	8.41 - - - -	40.45
3. Lasang RIS Improvement Project Davao del Norte, Region 11	Resto (ha) Canal Lining (km) Canal Structures (Unit)	4,800 28.90	9.48	9 4.30	3.04			9 45.72 1	13.10	8.10	9 4.30	2.19			9 27.69 -	703 36.15 -	84.60
4. Climate Change Adaptation Works NIS Nationwide	Earth Canal (km) Canal Lining (km) Canal Structures (Unit) Gravel Road (km)	Annual Program 20.47 14.50 171 2.82						20.47 14.50 171 2.82	4.60 10.45 117 3.82						4.60 10.45 117 3.82	4.60 10.45 117 3.82	78.98
5. Repair of National Irrigation Systems	Earth Canal (km) Canal Lining (km) Canal Structures (Unit) HDPE (km) Concrete Roads (km.) Gravel Road (km) Resto (ha)	Annual Program 81.21 305.63 457 0.06 3.44 59.89 100						81.21 305.63 457 0.06 3.44 59.89 100.00	34.07 202.02 288 - 3.44 49.36 -						34.07 202.02 288 - 3.44 49.36 -	34.07 202.02 288 - 3.44 49.36 -	77.75
6. National Irrigation Sector Rehabilitation & Improvement Project	New Resto (ha) Earth Canal (km) Canal Lining (km) Canal Structures (Unit) Gravel Road (km)	- 10,000 18.00 78.30 177		2,422		1,974 13.03 35 11.44	1,169 42.84 104.36 206	- 5,565 42.84 117.38 241 11.44			1,237			725	1,962 - - - -	3,162 - 44.10 95	79.81
7. Coconet Slope Protection in National Irrigation Systems	COCONET (sq. m.) Canal Lining (km)	Annual Program 78,721 0.02						78,721 0.02	66,151 0.15						66,151 0.15	66,151 0.15	87.02
8. Improvement of Service Roads in National Irrigation Systems	Canal Structures (Unit) Earth Canal (km) Concrete Roads (km.) Gravel Road (km)	Annual Program 3 0.15 48.95 215.11						3 0.15 48.95 215.11	3 - 45.88 163.77						3 - 45.88 163.77	3 - 45.88 163.77	96.51

CLASSIFICATION/PROJECTS/PROVINCE/REGION	Overall Area (ha)		FY 2020 REVISED TARGETS							FY 2020 ACCOMPLISHMENT							Actual to Date *	Overall Project Status (%)
			CY 2020 Program	Carryover Program					Total CY 2020	CY 2020 Program	Carryover Program					Total CY 2020		
				CY 2019	CY 2018	CY 2017	CY 2016	CY 2015			CY 2019	CY 2018	CY 2017	CY 2016	CY 2015			
Sub-Program 2: Communal Irrigation Systems																		
9. Restoration of Communal Irrigation Systems	Resto (ha)	Annual Program	3,330						3,330	2,457						2,457	2,457	79.95
	Earth Canal (km)		2.36						2.36	-						-	-	
	Canal Lining (km)		44.10						44.10	35.00						35.00	35.00	
	Canal Structures (Unit)		257						257	166						166	166	
	HDPE (km)		23.42						23.42	20.43						20.43	20.43	
	Gravel Road (km)		0.30						0.30	0.15						0.15	0.15	
10. Repair of Communal Irrigation Systems	Earth Canal (km)	Annual Program	6.76						6.76	5.62						5.62	5.62	75.03
	Canal Lining (km)		186.89						186.89	138.53						138.53	138.53	
	Canal Structures (Unit)		850						850	603						603	603	
	HDPE (km)		14.64						14.64	13.73						13.73	13.73	
	Concrete Roads (km.)		0.38						0.38	0.38						0.38	0.38	
	Gravel Road (km)		1.00						1.00	0.40						0.40	0.40	
11. Coconet Slope Protection in Communal Irrigation Systems	COCONET (sq. m.)	Annual Program	16,244						16,244	25,165						25,165	25,165	100.00
Sub-Program 3: Other Irrigation Systems																		
12. Repair of Groundwater Pump Irrigation Systems	Earth Canal (km)	Annual Program	2.19						2.19	1.42						1.42	1.42	86.64
	Canal Lining (km)		8.00						8.00	5.28						5.28	5.28	
	Canal Structures (Unit)		34						34	29						29	29	
	HDPE (km)		3.51						3.51	3.17						3.17	3.17	
	New (ha)		50						50	50						50	50	
PROGRAM 2: Irrigation Systems Development Program																		
Sub-Program 1: New National Irrigation Systems																		
13. Ilocos Norte-Ilocos Sur-Abra Irrigation Project, Stage 2	New (ha)	7,519							-							-	-	0.50
14. Ilocos Sur Transbasin Project Ilocos Sur, Region 1																-	-	0.07
15. Lower Agno RIS Improvement Project Pangasinan, Region 1	New (ha)	7,519	1,814	536					2,350	1,597	536					2,133	2,657	39.27
	Resto (ha)	1,786	677	503					1,180	617	502					1,119	1,388	
	Canal Lining (km)		65.31	17.18					82.49	59.64	13.09					72.73	117.30	
	Canal Structures (Unit)		151	78					229	115	75					190	195	
	Gravel (km.)		61.39	0.62					62.01	22.89	0.26	0.00				23.16	64.28	
16. Lower Apayao River Irrigation Project Apayao, CAR	New (ha)	1,211							-							-	-	1.78
	Canal Structures (Unit)		15	11					26	-						-	-	
	Gravel Road (km)			14.55					14.55							-	-	
	Canal Lining (km)								-							-	-	
	Concrete Roads (km.)		12.00						12.00	-						-	-	
17. Dibuluan Irrigation Project Isabela, Region 2	New	2,080							-							-	50	95.51
18. Tumauni River Multipurpose Project Isabela, Region 2	New (ha)	4,585							-							-	-	5.44
19. Balog-Balog MPIP, Phase II Tarlac, Region 3	New	17,890							-							-	-	42.38
	Resto	4,045							-							-	-	
	Canal Lining (km)								-	-						-	-	
	Canal Structures (Unit)								-	-						-	-	
20. North Lawis Palongohan Irrigation Project Zambales, Region 3	New	1,464	430						430	330						330	330	99.44
	Canal Lining (km)		9.15						9.15	10.74						10.74	15.29	
	Canal Structures (Unit)		26		2				28	20		2				22	33	
	Concrete Roads (km)			1.75					1.75		1.75					1.75	2.89	
21. Upper Gumain River IP Pampanga, Region 3	New	16,750							-							-	-	1.57
	Canal Lining (km)			3.51					3.51		3.51					3.51	4.01	
	Canal Structures (Unit)			3					3		3					3	3	
	Concrete Roads (km)			1.48					1.48		1.48					1.48	1.48	
	Gravel Road (km)		1.80						1.80	1.80						1.80	1.80	

CLASSIFICATION/PROJECTS/PROVINCE/REGION	Overall Area (ha)	FY 2020 REVISED TARGETS							FY 2020 ACCOMPLISHMENT							Actual to Date *	Overall Project Status (%)
		CY 2020 Program	Carryover Program					Total CY 2020	CY 2020 Program	Carryover Program					Total CY 2020		
			CY 2019	CY 2018	CY 2017	CY 2016	CY 2015			CY 2019	CY 2018	CY 2017	CY 2016	CY 2015			
22. Marikit Irrigation Project Nueva Ecija, Region 3	New 280 Canal Lining (km) 9.75 Canal Structures (Unit) 45 Gravel Road (km) 2.46	45 1.45 12 2.46		69 2.67 15 2.13				114 4.12 27 2.13			69 2.67 - 2.13			69 2.67 - 2.13	69 2.67 - 2.13	87.69	
23. Quipot Irrigation Project Quezon, Region 4A	New 2,620 Resto 180 Earth Canal (km) Canal Lining (km) Canal Structures (Unit) Concrete Roads (km)	805 180 0.89 9.77 27 1.33			1,006 180	800		2,611 180 0.89 9.77 27 1.33						- - - - - -	- - - - - -	89.06	
24. Panay River Basin Integrated Dev't. Project Capiz, Region 6	New 26,800							-						-	-	0.98	
25. Hilabangan Irrigation Project Iloilo, Region 6	New 1,700 Canal Lining (km) Canal Structures (Unit)	1,000 - -		700	600	60		2,360 - -				450	60	510 - -	1,210 0.47 1	49.79	
26. Jalaur River Multipurpose Project - Stage II Iloilo, Region 6	New 9,500 Resto Earth Canal (km) Canal Lining (km) Canal Structures (Unit) COCONET (sqm)	 10	 1					- - - - 11 -						- - - - - -	493 120 88.15 1.50 22 83,585	41.90	
27. Malogo Irrigation Project Negros Occidental, Region 6	New 4,000	500		400				900			400			400 -	400	19.78	
28. Amlan Irrigation Project Negros Oriental, Region 7	New (ha) 500 Earth Canal (km) Canal Lining (km) Canal Structures (Unit)	70 - - -	123					193 - - -	63	123				186 - - -	513 - - -	86.64	
29. Sta. Agueda-Datagon Irrigation Project Negros Oriental, Region 7	New (ha) 1,000 Canal Lining (km) Canal Structures (Unit) HDPE (km)	110 - - -	131	12				253 - - -	89	131	12			232 - - -	939 - - -	84.53	
30. Bohol Northeast Basin Multipurpose Dam Proj. Bohol, Region 7	New (ha) 12,500							- -						- -	- -	0.24	
31. Malinao Dam Improvement Project Bohol, Region 7	Resto 4,740							-						-	180	16.55	
32. Tanjay-Bais River Irrigation Project Negros Oriental, Region 7	New (ha) 3,900							-						-	-	0.32	
33. Bugko Irrigation Project Northern Samar, Region 8	New (ha) 1,010 Canal Lining (km) Canal Structures (Unit)	 0.42 4				30		30 0.42 4	0.25			0.62 1.69 10	21	21 2.55 10	1,001 23.08 146	81.75	
34. Catarman-Bobon IP Northern Samar, Region 8	New (ha) 1,060 Resto (ha) Canal Lining (km) Canal Structures (Unit)	 1.28 8						- - 1.28 8	0.77 5		0.24 48		21 9	- - 1.01 62	560 - 35.07 200	89.52	
35. Pinipisakan Irrigation Project Northern Samar, Region 8	New (ha) 1,405 Earth Canal (km) Canal Lining (km) Canal Structures (Unit) Concrete Rd (km) Gravel Road (km)	540 4.77 8.78 134 - 4.77		367	50			957 4.77 8.78 134 - 4.77	2.83					- - 2.83 - - -	595 7.95 11.57 246 30.63 8.28	85.09	
36. Lower Sibuguey I RIS Extension Project Zamboanga Sibugay, Region 9	New (ha) 1,400 Resto Canal Lining (km) Canal Structures (Unit) HDPE (km)	 	0.55		9	51		60 - 0.55 49	0.14		6.36 18	1.24 8		- - 7.60 26 0.14	1,400 - 23.18 33 0.14	89.77	
37. Manat Irrigation Project Compostella Valley, Region 11	New (ha) 1,000							-						-		6.11	

CLASSIFICATION/PROJECTS/PROVINCE/REGION	Overall Area (ha)	FY 2020 REVISED TARGETS							FY 2020 ACCOMPLISHMENT							Actual to Date *	Overall Project Status (%)
		CY 2020 Program	Carryover Program					Total CY 2020	CY 2020 Program	Carryover Program					Total CY 2020		
			CY 2019	CY 2018	CY 2017	CY 2016	CY 2015			CY 2019	CY 2018	CY 2017	CY 2016	CY 2015			
38. Upper Saug River Irrigation Project Davao del Norte, Region 11	New Canal Lining (km) 1,070	736 6.00						736 6.00							- -		91.93
39. Kabulnan 2 MIPP S.Kudarat, Maguindanao, Region 12	New Concrete Roads (km) Gravel Road (km) 19,330	 8.98		9.64				- 18.62							- -	- -	1.15
40. Lebak Integrated River Irrigation Project Sultan Kudarat	Canal Lining (km) Canal Structures (Unit) 10	5.00 10						5.00 10							- -	- -	7.16
41. Malitubog-Maridagao Irrigation Project Phase II North Cotabato, Region 12	New Earth Canal (km) Canal Lining (km) Canal Structures (Unit) 9,784	914 8.47 2.56 81	209	200	252	662	321	2,558 8.47 2.56 81	144	151 1.35	84 0.39	176 1.98 0.60 25	486 - 2.32 29	265 1.09 0.42 37	1,306 3.06 5.08 91	7,719 54.41 30.62 176	73.66
42. Sapalan River Irrigation Project Maguindanao, Region 12 (ARMM)	New Resto (ha) Canal Lining (km) Canal Structures (Unit) Gravel Road (km) 2,838	 12.67 49 14.53	941	482				1,757 - 12.67 49 14.53	0.18	245 5.33 13 5.02					245 - 5.69 26 5.02	584 - 24.25 78 5.02	59.77
43. Upi Integrated Irrigation Project Maguindanao, Region 12	New (ha) Canal Structures (Unit) Gravel Road (km) 821	 5 1.65						- 5 1.65	5 1.40						- 5 1.40	- 5 1.40	1.10
44. Bislig City Integrated Dev't Project-IC Surigao del Sur, Region 13	New Resto (ha) Canal Lining (km) Canal Structures (Unit) 1,250	90 10.20 99		90	405	60	135	600 90.00 10.20 99.00						-	- 4.90 48.00	1,250 - 24.68 105	94.81
45. Libang Irrigation Project Agusan del Sur, Region 13	New (ha) Canal Lining (km) Canal Structures (Unit) Gravel Road (km) 3,500	250 - 14 11.64						250 - 14 11.64							- - - -	- - - -	1.01
46. Ditsaan-Ramain River IP Lanao del Sur, Region 10 (ARMM)	New (ha) Earth Canal (km) Canal Lining (km) Canal Structures (Unit) Gravel Road (km) 4,000	70 - 2.95 5 0.22	70 1.23 - 2 2.00	196 - 0.98 - -	1 - 0.09 1 -	3 - 0.50 2 -		340 - 5.76 10 2.22	60 2.30 0.22	20 0.08 0.02	77 0.39	1 0.09 1	3 -		161 - 2.86 1 0.24	2,176 - 16.34 4 0.24	60.39
Sub-Program 2: Establishment of Pump Irrigation																	
47. Alfonso Lista Pump Irrigation Project	New (ha) Canal Lining (km) Canal Structures (Unit) 2,300	800 200.00 16		1				800 200.00 17	2.00						- 2.00 -	- 2.00 1	32.65
48. Chico River Pump Irrigation Project	New (ha) Canal Lining (km) Canal Structures (Unit) 8,700	 60.00 207						- 60.00 207							- - -	- - -	55.49
49. Establishment of Groundwater Pump IP Nationwide	New (ha) Canal Structures (Unit) HDPE (km) 3,973	 86 15.56						3,973 86 15.56	2,964 48 8.79						2,964 48 8.79	2,964 48 8.79	72.39
Sub-Program 3: Small Reservoir Irrigation Systems																	
50. Bayaas SRIP Pangasinan, Region 1	New (ha) 400							-							-	-	6.23
51. Dumuloc SRIP Pangasinan, Region 1	New (ha) 200							-							-	-	4.18
52. Gaco SRIP Ilocos Sur, Region 1	New (ha) 600							-							-	-	6.60
53. Sulvec SRIP Ilocos Norte, Region 1	New Earth Canal (km) Canal Lining (km) Canal Structures (Unit) 500	 - - -	50					50 - - -	0.93						- 0.93 -	200 0.60 3.22 4	60.34
54. Bulo SRIP Bulacan, Region 3	New (ha) Canal Lining (km) Canal Structures (Unit) Concrete Roads (km) Gravel Road (km) 1,000	 3.07 20 0.24 5.28						- 3.07 20 0.24 5.28							- - - - -	- 2.66 11 - -	77.16

CLASSIFICATION/PROJECTS/PROVINCE/REGION	Overall Area (ha)	FY 2020 REVISED TARGETS							FY 2020 ACCOMPLISHMENT							Actual to Date *	Overall Project Status (%)
		CY 2020 Program	Carryover Program					Total CY 2020	CY 2020 Program	Carryover Program					Total CY 2020		
			CY 2019	CY 2018	CY 2017	CY 2016	CY 2015			CY 2019	CY 2018	CY 2017	CY 2016	CY 2015			
55. Balbalungao SRIP Nueva Ecija, Region 3	New (ha) Canal Lining (km) Canal Structures (Unit)	500						- - -							- - -	840 8.10 67	41.85
56. Macalelon SRIP Quezon, Region 4A	New (ha) Canal Lining (km) Canal Structures (Unit)	630	5.14 21					- 5.14 21							- - -	- - -	51.79
57. Ibingan SRIP Sorsogon, Region 5	New (ha) Canal Lining (km)	255	7.00					- 7.00							- -	- -	57.10
58. Bayuyan SRIP Capiz, Region 6	New (ha) Canal Lining (km) Canal Structures (Unit)	120						- - -					90	90 - -	- 0.22 5	90 - -	34.12
59. Benliw SRIP Bohol, Region 7	New (ha) Canal Lining (km)	500						- -		120	190				310 -	310 -	84.32
60. Cabano SRIP Guimaras, Region 6	New (ha) Gravel Road (km)	340						- -			1.40				- 1.40	- 1.40	6.00
61. Hibale SRIP Bohol, Region 7	New (ha) Canal Lining (km)	375						- -							- -	- -	19.33
62. Mabini-Cayacay SRIP Bohol, Region 7	New	530						-							-	210	89.96
63. Bonot-Bonot SRIP Bohol, Region 7	New (ha) Canal Lining (km)	600						- -	69	180					249 -	349 -	66.86
64. Calunasan SRIP Bohol, Region 7	New (ha) Canal Lining (km)	250						- -							- -	- -	35.77
65. Tulunan SRIP N.Cotabato, Region 12	New (ha) Canal Lining (km) Canal Structures (Unit) Concrete Roads (km)	1,590	2.50 1					- 2.50 1 -		1.59					- 1.59 - -	- 3.24 8 2.49	12.30
Sub-Program 4: Special Irrigation																	
66. Balikatan Sagip Patubig Program (BSPP) Nationwide	New (ha) Resto (ha) Earth Canal (km) Canal Lining (km) Canal Structures (Unit) HDPE (km)	Annual Program	61 96 11.72 99 28.03					61 96.22 - 11.72 99 28.03	53 84 - 11.00 51 25.73						53 83.60 - 11.00 51 25.73	53 83.60 - 11.00 51 25.73	90.72
67. Small Irrigation Projects (SIP) Nationwide	New (ha) Earth Canal (km) Canal Lining (km) Canal Structures (Unit) HDPE (km) Gravel Road (km)	Annual Program	11,577 33.16 193.84 1,485 32.56 24.71					11,577 33.16 193.84 1,485 32.56 24.71	3,799 11.59 109.99 513 15.02 12.37						3,799 11.59 109.99 513 15.02 12.37	3,799 11.59 109.99 513 15.02 12.37	60.47
Sub-Program 5: Extension/Expansion of Existing Irrigation Systems																	
68. Extension/Expansion of Existing National Irrigation Systems Nationwide	New (ha) Canal Lining (km) Canal Structures (Unit)	Annual Program	278 7.42 42					278 7.42 42	98 3.30 32						98 3.30 32	98 3.30 32	70.09
69. Extension/Expansion of Existing Communal Irrigation Systems Nationwide	New (ha) Earth Canal (km) Canal Lining (km) Canal Structures (Unit) HDPE (km)	Annual Program	1,187 2.83 14.90 103 6.10					1,187 2.83 14.90 103 6.10	775 0.73 11.43 73 4.37						775 0.73 11.43 73 4.37	775 0.73 11.43 73 4.37	77.79
Sub-Program 6: Other Irrigation Systems																	
70. Comprehensive Agrarian Reform Program-IC (CARP-IC) Nationwide	New (ha) Resto (ha) Earth Canal (km) Canal Lining (km) Canal Structures (Unit) HDPE (km) Gravel Road (km)	Annual Program	1,296 772 0.57 34.95 232 7.88 0.85					1,296 772 0.57 34.95 232 7.88 0.85	929 642 0.57 24.71 141 5.55 0.85						929 642 0.57 24.71 141 5.55 0.85	929 642 0.57 24.71 141 5.55	81.83

CLASSIFICATION/PROJECTS/PROVINCE/REGION	Overall Area (ha)		FY 2020 REVISED TARGETS							FY 2020 ACCOMPLISHMENT							Actual to Date *	Overall Project Status (%)
			CY 2020 Program	Carryover Program					Total CY 2020	CY 2020 Program	Carryover Program					Total CY 2020		
				CY 2019	CY 2018	CY 2017	CY 2016	CY 2015			CY 2019	CY 2018	CY 2017	CY 2016	CY 2015			
TOTAL FOR FY 2020 IRRIGATION PROGRAM	New (ha)	189,676	26,839	2,060	2,426	2,323	1,666	456	35,770	11,019	1,261	1,077	627	570	355	14,910	32,612	
	Resto (ha)	25,641	10,895	503	2,521	-	2,154	1,169	17,142	6,061	502	1,246	-	-	725	8,534	10,997	
	Earth Canal (km)	18.00	167.40	-	-	-	-	42.84	210.24	61.68	-	-	1.98	-	1.09	64.74	212.79	
	Canal Lining (km)	90.05	1,350.12	42.44	11.46	3.13	13.53	104.36	1,525.04	705.63	37.96	18.04	4.74	4.01	0.42	770.79	1,046.12	
	Canal Structures (Unit)	229	4,961	111	61	1	47	206	5,387	2,341	88	84	44	38	37	2,632	3,586	
	HDPE (km)	-	139.53	-	-	-	-	-	139.53	102.01	-	-	-	-	-	102.01	102.01	
	COCONET (sqm)	-	94,965	-	-	-	-	-	94,965	91,316	-	-	-	-	-	91,316	174,901	
	Concrete Roads (km)	-	67.06	-	3.23	-	-	-	70.29	49.70	-	3.23	-	-	-	52.93	86.81	
	Gravel Road (km)	2.46	426.17	30.03	2.13	-	11.44	-	469.78	259.65	5.30	2.13	-	-	-	267.08	315.63	
II. CONTINUING APPROPRIATIONS																		
A. BALANCE FROM CY 2019 IRRIGATION PROGRAM																		
GENERAL ADMINISTRATION AND SUPPORT																		
1. Repair and Maintenance of Irrigation Systems a. Communal Irrigation Systems	Resto (ha)			2					2		2					2	41	96.23
	Earth Canal (km)			14.38					14.38		12.08					12.08	46.50	
	Canal Lining (km)			245.91					245.91		214.16					214.16	442.86	
	HDPE (km)			6.85					6.85		6.80					6.80	17.12	
	Canal Structures (Unit)			1,208					1,208		1,119					1,119	1,871	
	Concrete Roads (km.)			0.29					0.29		0.29					0.29	0.29	
	Gravel Road (km)			5.03					5.03		4.79					4.79	7.99	
b. National Irrigation Systems	Resto (ha)			292					292		280					280	280	94.94
	Earth Canal (km)			175.33					175.33		153.03					153.03	236.56	
	Canal Lining (km)			240.92					240.92		194.47					194.47	337.90	
	HDPE (km)			0.47					0.47		0.47					0.47	0.47	
	Canal Structures (Unit)			411					411		308					308	466	
	Concrete Roads (km.)			2.70					2.70		0.44					0.44	0.44	
	Gravel Road (km)			61.20					61.20		37.44					37.44	67.76	
2. Repair of Groundwater Pump Irrigation Systems	New (ha)								-		21					21	21	99.84
	Resto (ha)			27					27		15					15	24	
	Earth Canal (km)			1.67					1.67		1.67					1.67	1.67	
	Canal Lining (km)			4.40					4.40		4.40					4.40	7.54	
	HDPE (km)			1.86					1.86		1.86					1.86	2.40	
	Canal Structures (Unit)			17					17		9					9	11	
TOTAL for GENERAL ADMINISTRATION AND SUPPORT	New (ha)		-	-	-	-	-	-	-	-	21	-	-	-	-	21	21	
	Resto (ha)		-	321	-	-	-	-	321	-	297	-	-	-	-	297	345	
	Earth Canal (km)		-	191.38	-	-	-	-	191.38	-	166.79	-	-	-	-	166.79	284.73	
	Canal Lining (km)		-	491.23	-	-	-	-	491.23	-	413.03	-	-	-	-	413.03	788.30	
	HDPE (km)		-	9.18	-	-	-	-	9.18	-	9.13	-	-	-	-	9.13	19.99	
	Canal Structures (Unit)		-	1,636	-	-	-	-	1,636	-	1,436	-	-	-	-	1,436	2,348	
	Concrete Roads (km.)		-	2.99	-	-	-	-	2.99	-	0.73	-	-	-	-	0.73	0.73	
	Gravel Road (km)		-	66.23	-	-	-	-	66.23	-	42.23	-	-	-	-	42.23	75.75	
OPERATIONS																		
PROGRAM 1: Irrigation Systems Restoration Program																		
Sub-Program 1: National Irrigation Systems																		
1. Restoration of National Irrigation Systems Nationwide	Resto (ha)	Annual		534					534		494					494	1,200	98.05
	Earth Canal (km)	Program		14.22					14.22		14.22					14.22	23.12	
	Canal Lining (km)			16.67					16.67		17.64					17.64	22.04	
	Canal Structures (Unit)			24					24		26					26	28	
	Gravel Road (km)			1.10					1.10		1.10					1.10	1.10	
2. Climate Change Adaptation Works NIS Nationwide	Resto (ha)			100					100		100					100	100	99.29
	Canal Lining (km)	Annual		1.31					1.31		1.95					1.95	3.22	
	Canal Structures (Unit)	Program		76					76		54					54	87	
	Concrete Roads (km.)			0.50					0.50		0.50					0.50	0.50	
3. Coconet Slope Protection in National IS	COCONET (sq. m.)	Annual		96,829					96,829		96,730					96,730	187,315	96.57
	Canal Lining (km)	Program		0.92					0.92		1.87					1.87	3.53	
	Canal Structures (Unit)			13					13		13					13	13	

CLASSIFICATION/PROJECTS/PROVINCE/REGION	Overall Area (ha)		FY 2020 REVISED TARGETS							FY 2020 ACCOMPLISHMENT							Actual to Date *	Overall Project Status (%)
			CY 2020 Program	Carryover Program					Total CY 2020	CY 2020 Program	Carryover Program					Total CY 2020		
				CY 2019	CY 2018	CY 2017	CY 2016	CY 2015			CY 2019	CY 2018	CY 2017	CY 2016	CY 2015			
4. Improvement of Service Roads in National IS	Concrete Roads (km.) Gravel Road (km) Earth Canal (km) Canal Structures (Unit)	Annual Program		28.56 23.62					28.56 23.62 - 1		33.39 22.50 1					33.39 22.50 - 1	64.97 85.34 0.80 1	98.36
Sub-Program 2: Communal Irrigation Systems																		
5. Restoration of Communal Irrigation Systems Nationwide	Resto (ha) Earth Canal (km) Canal Lining (km) HDPE (km) Canal Structures (Unit)	Annual Program		1,542 1.59 20.72 0.71 138					1,542 1.59 20.72 0.71 138		1,295 1.59 18.89 0.71 129					1,295 1.59 18.89 0.71 129	2,088 1.71 37.12 4.90 187	96.77
6. Climate Change Adaptation Works CIS Nationwide	Canal Lining (km) HDPE (km) Canal Structures (Unit)	Annual Program		1.89 - 30					1.89 - 30		1.89 - 29					1.89 - 29	7.59 0.10 79	99.97
7. Improvement of Service Roads in CIS Nationwide	Concrete Roads (km.) Gravel Road (km)	Annual Program		1.47 25.25					1.47 25.25		1.47 25.25					1.47 25.25	3.50 30.58	100.00
Sub-Program 3: Other Irrigation Systems																		
8. Restoration of Groundwater Pump IS	Resto (ha)	Annual Program		28					28		28					28 -	244	89.25
9. Comprehensive Agrarian Reform Program-IC Nationwide	New (ha) Resto (ha) Earth Canal (km) Canal Lining (km) HDPE (km) Canal Structures (Unit) Gravel Road (km)	Annual Program		848 187 2.41 16.74 1.88 201 0.01					848 187 2.41 16.74 1.88 201 0.01		954 174 1.54 15.88 1.82 198 0.01					954 174 1.54 15.88 1.82 198 0.01	1,277 435 2.16 38.82 7.60 305 0.61	100.00
PROGRAM 2: Irrigation Systems Development Program																		
Sub-Program 1: New National Irrigation Systems																		
10. Bongabong River Irrigation Project Oriental Mindoro, Region 4B	New Canal Lining (km) Canal Structures (Unit)	5,100		3,005					3,005		2,057				198	2,255 - 33	4,152 10.45	97.30
11. Lower Sibuguey II RIS Extension Project Zamboanga Sibugay, Region 9	New Resto Canal Lining (km) Canal Structures (Unit) Concrete Roads (km)	1,550 40		 3.55 16	68	308			376 - 3.55 38 -		 2					- - - 2 -	1,224 - 9.40 27 2.33	94.76
12. Tandubas Irrigation Project Tawi-Tawi, Region 9	New Canal Structures (Unit) Canal Lining (km)	200		2 1.76					- 2 1.76		 1.86	0.36				- - 2.22	40 3.22	100.00
Sub-Program 2: Establishment of Pump Irrigation Systems																		
13. Establishment of Groundwater Pump IP Nationwide	New (ha) Resto (ha) Canal Lining (km) HDPE (km) Canal Structures (Unit) Gravel Road (km)	Annual Program		2,591 - 3.57 53.44 87 1.92					2,591 - 3.57 53.44 87 1.92		1,911 2.37 46.70 83					1,911 - 2.37 46.70 83 -	6,524 30 5.10 49.08 95 -	91.29
Sub-Program 3: Small Reservoir Irrigation Systems																		
14. Barbar SRIP Ilocos Sur, Region 1	New (ha) Canal Lining (km) Canal Structures (Unit)	1,000		535					535 - -							- - -	165 1.05 5	96.75
15. Marimay SRIP Apayao, CAR	New (ha) Canal Lining (km) Canal Structures (Unit) Gravel Road (km)	1,160		 0.67 2 6.35	935				935 0.67 10 6.35		 0.67 8					- 0.67 8 -	- 14.85 46 -	78.99
16. Upper Tabuating SRIP Nueva Ecija, Region 3	New (ha) Canal Lining (km)	700 5.66		 5.66	400				400 5.66			401				401 -	701	99.62

CLASSIFICATION/PROJECTS/PROVINCE/REGION	Overall Area (ha)	FY 2020 REVISED TARGETS							FY 2020 ACCOMPLISHMENT							Actual to Date *	Overall Project Status (%)
		CY 2020 Program	Carryover Program					Total CY 2020	CY 2020 Program	Carryover Program					Total CY 2020		
			CY 2019	CY 2018	CY 2017	CY 2016	CY 2015			CY 2019	CY 2018	CY 2017	CY 2016	CY 2015			
17. Hibulangan SRIP Northern Leyte, Region 8	New (ha) 1,738 Canal Lining (km) Canal Structures (Unit)		0.15 8					- 0.15 8		0.15 8	1.12 30				- 1.28 38	- 16.23 167	98.02
Sub-Program 4: Special Irrigation Systems																	
18. Balikatan Sagip Patubig Program (BSPP)	New (ha) Annual Program Resto (ha) Canal Lining (km) HDPE (km) Canal Structures (Unit)		343 13 7.76 25.26 163					343 13 7.76 25.26 163		331 13 7.30 24.98 159					331 13 7.30 24.98 159	452 33 24.21 52.68 214	98.26
19. Small Irrigation Projects (SIP)	New (ha) Annual Program Resto (ha) Earth Canal (km) Canal Lining (km) HDPE (km) Canal Structures (Unit) Concrete Roads (km) Gravel Road (km)		7,356 - 1.44 86.52 77.09 757 - 12.30					7,356 - 1.44 86.52 77.09 757 - 12.30		5,789 - 1.82 83.36 75.33 741 - 10.87					5,789 - 1.82 83.36 75.33 741 - 10.87	8,921 24 4.10 159.85 101.25 925 - 17.35	93.18
Sub-Program 5: Extension/Expansion of Existing Irrigation Systems																	
20. Extension/Expansion of Existing CIS	New (ha) Annual Program Resto (ha) Earth Canal (km) Canal Lining (km) HDPE (km) Canal Structures (Unit) Concrete Roads (km) Gravel Road (km)		2,201 - 1.20 35.37 32.72 302 0.62 3.77					2,201 - 1.20 35.37 32.72 302 0.62 3.77		2,049 - 1.34 34.76 32.72 318 0.62 3.92					2,049 - 1.34 34.76 32.72 318 0.62 3.92	3,702 12 1.34 69.78 73.17 420 0.62 6.77	94.22
21. Extension/Expansion of Existing NIS	New (ha) Annual Program Earth Canal (km) Canal Lining (km) HDPE (km) Canal Structures (Unit) Gravel Road (km)		2,679 1.47 45.78 1.48 212 4.30					2,679 1.47 45.78 1.48 212 4.30		1,996 7.57 40.96 1.20 191 3.48					1,996 7.57 40.96 1.20 191 3.48	2,609 13.63 76.69 1.20 240 7.37	93.01
TOTAL FOR OPERATIONS	New (ha) 11,448		19,557	935	468	308	-	21,268		15,086	-	401	-	198	15,685	29,766	
	Resto (ha) -		2,404	-	-	-	-	2,404		2,104	-	-	-	-	2,104	4,066	
	Earth Canal (km) -		22.33	-	-	-	-	22.33		28.08	-	-	-	-	28.08	46.06	
	Canal Lining (km) 5.66		242.71	6.33	-	-	-	249.04		228.88	2.15	-	-	-	231.04	503.15	
	HDPE (km) -		192.58	-	-	-	-	192.58		183.45	-	-	-	-	183.45	289.98	
	Canal Structures (Unit) 40		2,031	8	-	22	-	2,061		1,952	38	-	-	-	1,990	2,872	
	COCONET (sq. m.) -		96,829	-	-	-	-	96,829		96,730	-	-	-	-	96,730	187,315	
	Concrete Roads (km.) -		31.14	-	-	-	-	31.14		35.97	-	-	-	-	35.97	71.92	
Gravel Road (km) -		78.63	-	-	-	-	78.63		67.14	-	-	-	-	67.14	149.14		
SPECIAL PROVISION																	
1. Balog-Balog Multipurpose Project-Phase II Tarlac								- -							- -		
2. Climate Change Adaptation Works (Communal Systems)	Canal Structures (Unit)							- -		1 -					1 -	1 -	100.00
3. Climate Change Adaptation Works (National Systems)	Canal Structures (Unit)							- -		5 -					5 -	5 -	100.00
4. Extension/Expansion of Existing Communal Irrigation Systems	Canal Lining (km) Gravel Road (km)		0.91 0.42					0.91 0.42		0.91 0.42					0.91 0.42	0.91 0.42	
5. Extension/Expansion of Existing National Irrigation Systems	New (ha) Canal Lining (km) Canal Structures (Unit) Gravel Road (km)		100 0.80 8 3.00					100 0.80 8 3.00		100 0.80 8 3.00					100 0.80 8 3.00	100 0.80 8 3.00	100.00
6. Formerly Casecnan Multipurpose Irrigation and Power Project								- -							- -		43.20

CLASSIFICATION/PROJECTS/PROVINCE/REGION	Overall Area (ha)	FY 2020 REVISED TARGETS							FY 2020 ACCOMPLISHMENT							Actual to Date *	Overall Project Status (%)
		CY 2020 Program	Carryover Program					Total CY 2020	CY 2020 Program	Carryover Program					Total CY 2020		
			CY 2019	CY 2018	CY 2017	CY 2016	CY 2015			CY 2019	CY 2018	CY 2017	CY 2016	CY 2015			
7. Improvement of Service Roads in National Irrigation Systems	Concrete Roads (km.)		16.36					16.36		12.88					12.88	12.88	96.95
8. Pinipisakan Irrigation Project, Northern Samar	Earth Canal (km)		11.70					11.70		6.40					6.40	6.40	27.70
	Canal Lining (km)							-		6.40					6.40	6.40	
	Canal Structures (Unit)		58					58		24					24	24	
	Gravel Road (km)		11.70					11.70		-					-	-	
9. Repair of Communal Irrigation Systems	Canal Lining (km)		7.23					7.23		5.83					5.83	5.83	82.53
	Canal Structures (Unit)		36					36		27					27	27	
	Gravel Road (km)		0.50					0.50							-	-	
10. Repair of National Irrigation Systems	Earth Canal (km)		79.63					79.63		79.63					79.63	79.63	72.89
	Canal Lining (km)		10.58					10.58		4.10					4.10	4.10	
	Canal Structures (Unit)		26					26		17					17	17	
	Gravel Road (km)		71.85					71.85		71.60					71.60	71.60	
11. Restoration of Communal Irrigation Systems	Resto (ha)		49					49		49					49	49	100.00
	Canal Lining (km)		1.70					1.70		1.70					1.70	1.70	
	Canal Structures (Unit)		1					1		1					1	1	
12. Small Irrigation Projects (SIP)	New (ha)		400					400		350					350	350	87.62
	Canal Lining (km)		3.88					3.88		3.01					3.01	3.01	
	Canal Structures (Unit)		22					22		19					19	19	
	Gravel Road (km)		1.29					1.29		1.29					1.29	1.29	
TOTAL FOR SPECIAL PROVISION	New (ha)		500	-	-	-	-	500	-	450	-	-	-	-	450	450	
	Resto (ha)		49	-	-	-	-	49	-	49	-	-	-	-	49	49	
	Earth Canal (km)		91.33	-	-	-	-	91.33	-	86.03	-	-	-	-	86.03	86.03	
	Canal Lining (km)		25.09	-	-	-	-	25.09	-	22.74	-	-	-	-	22.74	22.74	
	Canal Structures (Unit)		151	-	-	-	-	151	-	102	-	-	-	-	102	102	
	Concrete Roads (km.)		16.36	-	-	-	-	16.36	-	12.88	-	-	-	-	12.88	12.88	
	Gravel Road (km)		88.76	-	-	-	-	88.76	-	76.31	-	-	-	-	76.31	76.31	
OTHER SOURCES																	
13. National Disaster Risk Reduction Management Fund a. Communal Irrigation Systems	Earth Canal (km)		0.64					0.64									83.18
	Canal Lining (km)		6.58					6.58		6.58					6.58	6.58	
	Canal Structures (Unit)		7					7		6					6	6	
b. National Irrigation Systems	Canal Lining (km)		0.07					0.07								-	83.18
TOTAL FOR CONTINUING APPROPRIATIONS BALANCE FROM CY 2019 IRRIGATION PROGRAM	New (ha)	11,448	20,057	935	468	308	-	21,768		15,557	-	401	-	198	16,156	30,237	
	Resto (ha)	-	2,773	-	-	-	-	2,773		2,449	-	-	-	-	2,449	4,460	
	Earth Canal (km)	-	305.68	-	-	-	-	305.68		280.89	-	-	-	-	280.89	416.82	
	Canal Lining (km)	5.66	765.69	6.33	-	-	-	772.02		671.24	2.15	-	-	-	673.39	1,320.77	
	HDPE (km)	-	201.75	-	-	-	-	201.75		192.58	-	-	-	-	192.58	309.97	
	Canal Structures (Unit)	40	3,825	8	-	22	-	3,855		3,496	38	-	-	-	3,534	5,328	
	COCONET (sq. m.)	-	96,829	-	-	-	-	96,829		96,730	-	-	-	-	96,730	187,315	
	Concrete Road (km.)	-	50.50	-	-	-	-	50.50		49.58	-	-	-	-	49.58	85.53	
	Gravel Road (km)	-	233.62	-	-	-	-	233.62		185.68	-	-	-	-	185.68	301.20	
	B. BALANCE FROM CY 2018 IRRIGATION PROGRAM																
OPERATIONS																	
PROGRAM 1: Irrigation Systems (Restoration/Repair/Rehabilitation Program)																	
Sub-Program 1: Existing National Irrigation Systems																	
1. Resto/Rehab/Repair of Existing National IS Nationwide	Resto (ha)	Annual Program			704			704			754				754	4,799	100.00
	Earth Canal (km)				45.17			45.17			24.21				24.21	287.25	
	Canal Lining (km)				64.73			64.73			28.43				28.43	477.41	
	HDPE (km)				-			-			-				-	0.96	
	Canal Structures (Unit)				195			195			102				102	665	
	Concrete Rd (km)				3.57			3.57			2.20				2.20	11.06	
	Gravel Road (km)				42.61			42.61			7.37				7.37	22.35	

CLASSIFICATION/PROJECTS/PROVINCE/REGION	Overall Area (ha)		FY 2020 REVISED TARGETS						FY 2020 ACCOMPLISHMENT						Actual to Date *	Overall Project Status (%)		
			CY 2020 Program	Carryover Program					Total CY 2020	CY 2020 Program	Carryover Program						Total CY 2020	
				CY 2019	CY 2018	CY 2017	CY 2016	CY 2015			CY 2019	CY 2018	CY 2017	CY 2016				CY 2015
2. Climate Change Adaptation Works (NIS)	Resto (ha) Earth Canal (km) Canal Lining (km) Canal Structures (Unit) Concrete Rd (km) Gravel Road (km)	Annual Program						- - 0.62 87 2.72 -							- - 0.18 27 - -	600 68.15 3.65 298 - 2.09	99.91	
3. Upgrading/Rehabilitation of NIS damaged by Typhoon Yolanda	Resto (ha) Canal Lining (km) Canal Structures (Unit) Gravel Rd (km)	Annual Program			15 4.42 2 0.10			15 4.42 2 0.10			15 2.89 2 0.11				15 2.89 2 0.11	123 43.97 19 3.06		
4. Coconet Slope Protection in National IS Nationwide	COCONET (sqm) Canal Lining (km)	Annual Program			24,720			24,720			5,548				5,548	345,997 2.39		
5. Improvement of Service Roads in National IS Nationwide	Earth Canal (km) Concrete Rd (km) Gravel Road (km)	Annual Program						- 1.32 10.07							- 0.51 1.20	0.40 71.28 160.01		
Sub-Program 2: Existing Communal Irrigation Systems																		
6. Resto/Rehab/Repair of Existing Communal IS	New Resto (ha) Earth Canal (km) Canal Lining (km) Canal Structures (Unit) HDPE Pipes (km) Concrete Rd (km) Gravel Road (km)	Annual Program			758 17.61 102.31 395 11.34 - 1.20			- 758 17.61 102.31 395 11.34 - 1.20			769 4.06 34.91 218				- 769 4.06 34.91 218 - - -	356 8,394 39.30 558.73 2,089 38.11 0.70 2.06		
7. Climate Change Adaptation Works (Communal IS)	Resto (ha) Earth Canal (km) Canal Lining (km) Canal Structures (Unit)	Annual Program						- - 0.17 16							- - - 1	15 0.46 3.43 134	100.00	
Sub-Program 3: Repair of Groundwater Pump IS																		
Sub-Program 4: Comprehensive Agrarian Reform Program																		
8. Comprehensive Agrarian Reform Program-IC	New Resto (ha) Earth Canal (km) Canal Lining (km) Canal Structures (Unit) HDPE (km)	Annual Program			204 270 - 5.19 85 -			204 270 - 5.19 85 -			58 200 - 0.13 6				58 200 - 0.13 6 -	1,058 796 1.64 45.11 210 13.35	99.56	
PROGRAM 2: IRRIGATION SYSTEMS DEVELOPMENT PROGRAM																		
Sub-Program 1: New National Irrigation Systems																		
9. Agno RIS Extension Project Pangasinan, Region 1	New Resto (ha) Earth Canal (km) Canal Lining (km) Canal Structures (Unit) COCONET (sqm) Gravel Rd (km)	12,351 1,869				5,962	1,914 218		7,876 218 - 7.74 - - -						- - 1.84 4.35 79 80 200 - 8.39	- 3,104 198.92 92.42 864 7.24 84.01	99.93	
10. Aklan RIS Aklan, Region 6	New Resto (ha)			308				308 -			308				308 -	308		
11. Gregorio del Pilar Impounding Project Ilocos Sur, Region 1	New Earth Canal (km) Canal Structures (Unit)	1,978						- - -							- - -	- 3.37 37	1.10	
12. Ilocos Sur Integrated Irrigation Project Ilocos Sur, Region 1	New	7,830						-							- - -	- - -		0.11

CLASSIFICATION/PROJECTS/PROVINCE/REGION	Overall Area (ha)	FY 2020 REVISED TARGETS							FY 2020 ACCOMPLISHMENT							Actual to Date *	Overall Project Status (%)
		CY 2020 Program	Carryover Program					Total CY 2020	CY 2020 Program	Carryover Program					Total CY 2020		
			CY 2019	CY 2018	CY 2017	CY 2016	CY 2015			CY 2019	CY 2018	CY 2017	CY 2016	CY 2015			
13. Casecnan Multipurpose IP-IC Phase II Nueva Ecija, Region 3	New Earth Canal (km) Canal Lining (km) Canal Structures (Unit) COCONET (sqm) Gravel Road (km)	20,321				798		798 - - - - -							- - - - -	22,068 9.00 119.36 905 39,280 48.45	91.05
14. Imbang Irrigation Project Negros Occidental, Region 6	New	4,443						-							- -	- -	-
15. Bantayan Irrigation Project Northern Samar, Region 8	New Canal Lining (km) Canal Structures (Unit)	436		228				228 - -			228 3.19 111				228 3.19 111	438 25.76 187	100.00
16. Bulao Irrigation Project Northern Samar, Region 8	New Earth Canal (km) Canal Lining (km) Canal Structures (Unit) Concrete Rd (km)	742		100			100	200 - - -						100	100 - - -	700 24.40 8.82 61 1.50	66.76
17. Calbiga Irrigation Project Western Samar, Region 8	New Canal Lining (km) Canal Structures (Unit)	913		63				63 - -			5.08 97				- 5.08 97	850 43.27 230	98.93
18. Gandara IP (Concepcion Nacube Area) Western Samar, Region 8	New Canal Lining (km) Canal Structures (Unit)							- - -							- - -	- 1.80 8	9.30
19. Gandara IP (Pologon Area) Western Samar, Region 8	New Earth Canal (km) Canal Lining (km) Canal Structures (Unit)	150					30	30 - - -						30	30 - - -	150 5.54 16.84 128	96.48
20. Hagbay Irrigation Project Northern Samar, Region 8	New Earth Canal (km) Canal Lining (km) Canal Structures (Unit) Concrete Rd (km)	708		308				308 - - -			3				- - 3 -	400 3.70 21.36 90 3.70	71.75
21. Mat-I Ambacon Pinanaan IP Agusan del Norte, Region 13	New Canal Lining (km) Canal Structures (Unit)	1,200 12.18 18		39 1.78 9				39 1.78 9			82 3.20 24				82 3.20 24	1,093 15.60 36	100.00
Sub-Program 2: Establishment of Pump Irrigation Systems																	
22. Nassiping PIP Ph. 1 Cagayan, Region 2	New	1,028						-							-	166	100.00
23. Establishment of Groundwater Pump IP Nationwide	New Resto (ha) Earth Canal (km) Canal Lining (km) Canal Structures (Unit) HDPE Pipes (km)	Annual Program		225 1.00 0.90 5				225 - 1.00 0.90 5 -			225 0.25 4				225 - 0.25 4 -	6,409 144 - 3.29 51 10.50	99.89
Sub-Program 3: Small Reservoir Irrigation Program																	
24. Sta. Rita SRIP Western Samar, Region 8	New Earth Canal (km) Canal Lining (km) Canal Structures (Unit)	911						- - - -			7.02				- 7.02 - -	- 27.70 4.60 22	97.88
Sub-Program 4: Special Irrigation																	
25. Small Irrigation Project (SIP) Nationwide	New Resto (ha) Earth Canal (km) Canal Lining (km) Canal Structures (Unit) HDPE (km) Concrete Rd (km) Gravel Road (km)	Annual Program		2,406 20 6.37 84.61 671 18.21 2.50				2,406 20 6.37 84.61 671 18.21 2.50			2,014 - 1.12 14.62 140 5.70				2,014 - 1.12 14.62 140 5.70 - -	14,844 51 30.87 294.24 2,060 86.49 1.39 16.94	97.91

CLASSIFICATION/PROJECTS/PROVINCE/REGION	Overall Area (ha)	FY 2020 REVISED TARGETS							FY 2020 ACCOMPLISHMENT							Actual to Date *	Overall Project Status (%)	
		CY 2020 Program	Carryover Program					Total CY 2020	CY 2020 Program	Carryover Program					Total CY 2020			
			CY 2019	CY 2018	CY 2017	CY 2016	CY 2015			CY 2019	CY 2018	CY 2017	CY 2016	CY 2015				
Sub-Program 5: Expansion of Existing Irrigation Systems																		
26. Extention/Expansion of Existing National IS Nationwide	New	Annual Program			375				375			295				295	1,095	96.67
	Resto (ha)				140				140			140				140	355	
	Earth Canal (km)				4.00				4.00			4.00				4.00	26.94	
	Canal Lining (km)				4.57				4.57			2.28				2.28	38.85	
	Canal Structures (Unit)				55				55			18				18	108	
	HDPE (km)				-				-			0.49				0.49	1.41	
	Gravel Road (km)				4.25				4.25			0.86				0.86	0.86	
27. Extention/Expansion of Existing Communal IS Nationwide	New	Annual Program			461				461			454				454	3,878	100.00
	Resto (ha)				9				9			9				9	278	
	Earth Canal (km)				0.40				0.40			0.12				0.12	16.45	
	Canal Lining (km)				9.09				9.09			7.19				7.19	114.66	
	Canal Structures (Unit)				56				56			39				39	435	
	HDPE (km)				-				-			-				-	29.35	
Other Sources																		
28. National Disaster Risk Reduction Mgt. Fund a. NDRRMF (Communal Systems)	Canal Lining (km)							-							-	1.51	100.00	
	Canal Structures (Unit)							-							-	1		
b. NDRRMF (National Systems)	Resto (ha)							-			825				825	825	100.00	
	Canal Lining (km)							-			1.61				1.61	11.02		
	Canal Structures (Unit)							-			3				3	15		
	Gravel Road (km)							-			1.87				2	1.87		
29. Quick Response Fund a. QRF (Communal Systems)	Resto (ha)							-							-	198	99.81	
	Earth Canal (km)			0.64				0.64			0.64				0.64	13.43		
	Canal Lining (km)							-							-	4.56		
	Canal Structures (Unit)			2				2			2				2	28		
b. QRF (National Systems)	Canal Lining (km)							-			0.30				0.30	3.53	96.18	
	Canal Structures (Unit)							-							-	4		
	Gravel Road (km)							-							-	0.50		
TOTAL FOR CONTINUING APPROPRIATIONS BALANCE FROM CY 2018	New	53,011			4,717	5,962	2,712	130	13,521			3,664	-	-	130	3,794	58,528	
	Resto (ha)	1,869			1,916	-	218	-	2,134			2,712	-	-	-	2,712	19,682	
	Earth Canal (km)	-			75.19	-	-	-	75.19			41.17	1.84	-	-	43.01	757.53	
	Canal Lining (km)	12.18			278.38	-	7.74	-	286.12			104.25	4.35	10.70	-	119.30	1,956.16	
	Canal Structures (Unit)	18			1,579	-	-	-	1,579			877	80	200	-	1,157	8,685	
	COCONET (sqm)	-			24,720	-	-	-	24,720			5,548	-	-	-	5,548	385,285	
	HDPE (km)	-			29.55	-	-	-	29.55			6.20	-	-	-	6.20	180.18	
	Concrete Rd (km)	-			7.61	-	-	-	7.61			2.71	-	-	-	2.71	89.63	
	Gravel Road (km)	-			60.73	-	-	-	60.73			11.41	8.39	14.07	-	33.87	342.19	
B. BALANCE FROM CY 2017																		
1. Extension/Expansion of Existing CIS Nationwide	New (ha)	Annual Program				102			102				82			82	2,952	99.42
	Resto (ha)				26			26			26				26	243		
	Earth Canal (km)							-							-	1.77		
	Canal Lining (km)							-							-	103.19		
	HDPE (km)				1.46			1.46				0.00			0.00	35.70		
	Canal Structures (Unit)				2			2							-	352		
2. Extension/Expansion of Existing NIS Nationwide	New (ha)					20			20				20			20	937	
	Resto (ha)							-						-	50			
	Earth Canal (km)							-						-	2			
	Canal Lining (km)							-						-	29			
	HDPE (km)							-						-	1			
	Canal Structures (Unit)							-				4			4	60		
3. Climate Change Adaptation Works (Communal IS) Nationwide	Earth Canal (km)								-						-	3.80		
	Canal Lining (km)							-						-	5.36			
	Canal Structures (Unit)				15			15				7			7	129		

CLASSIFICATION/PROJECTS/PROVINCE/REGION	Overall Area (ha)	FY 2020 REVISED TARGETS							FY 2020 ACCOMPLISHMENT							Actual to Date *	Overall Project Status (%)
		CY 2020 Program	Carryover Program					Total CY 2020	CY 2020 Program	Carryover Program					Total CY 2020		
			CY 2019	CY 2018	CY 2017	CY 2016	CY 2015			CY 2019	CY 2018	CY 2017	CY 2016	CY 2015			
4. Climate Change Adaptation Works (National IS) Nationwide	New (ha)							-							-	111	
	Earth Canal (km)							-							-	9.80	
	Canal Lining (km)							-							-	1.74	
	Canal Structures (Unit)			280				280			170				170	129	
	Gravel Road (km)							-							-	0.83	
5. Establishment of Groundwater Pump IP Nationwide	New (ha)			22				22			10				10	2,467	
	Resto (ha)			1				1							-	83	
	Canal Lining (km)							-							-	2.92	
	Canal Structures (Unit)							-							-	6	
6. Repair of Groundwater Pump IS Nationwide	Resto	Annual Program			20			20			20				20	443	100.00
	Earth Canal (km)														-	1.68	
	Canal Lining (km)														-	1.04	
	Canal Structures (Unit)			2				2			2				2	29	
	HDPE (km)														-	3.00	
7. Upgrading/Rehabilitation of NIS damaged by Typhoon Yolanda	Canal Lining (km)	Annual Program			1.75			1.75			4.83				4.83	131.88	96.64
	Canal Structures (Unit)			15				15			17				17	46	
	Gravel Rd (km)							-							-	12.62	
8. Comprehensive Agrarian Reform Program	New	Annual Program			24			24							-	495	99.84
	Resto			100				100			23				23	516	
	Earth Canal (km)							-							-	2.09	
	Canal Lining (km)			2.24				2.24			0.10				0.10	12.66	
	Canal Structures (Unit)			16				16			1				1	110	
	HDPE (km)							-							-	0.50	
	Concrete Road (km)							-							-	0.60	
9. Resto/Rehab/Repair of NIS Nationwide	New	Annual Program						-							-		100.00
	Resto			196				196			195				195	4,215	
	Earth Canal (km)			18.76				18.76			2.33				2.33	319.42	
	Canal Lining (km)			40.30				40.30			25.18				25.18	507.01	
	Canal Structures (Unit)			94				94			30				30	657	
	COCONET (sqm)							-							-	3,750	
	Concrete Roads (km)			26.87				26.87							-	1.12	
	Gravel Road (km)							-							-	45.80	
10. Resto/Rehab/Repair of CIS Nationwide	New	Annual Program						-							-	328	99.84
	Resto			179				179			177				177	9,380	
	Earth Canal (km)			5.14				5.14			2.07				2.07	51.96	
	Canal Lining (km)			59.88				59.88			3.04				3.04	612.86	
	Canal Structures (Unit)			180				180			34				34	1,885	
	HDPE (km)			1.60				1.60			0.49				0.49	69.51	
	Concrete Roads (km)			4.30				4.30							-	69.51	
	Gravel Road (km)			0.01				0.01							-	7.47	
11. Improvement of Service Roads in NIS Nationwide	Resto (ha)	Annual Program													-	-	99.03
	Concrete Road (km)			5.47				5.47			0.85				0.85	18.22	
	Gravel Road (km)			9.98				9.98			1.20				1.20	72.71	
	Canal Lining (km)														-	2.48	
	Canal Structures (Unit)														-	2	
12. Bagtinton SRIP Marinduque, Region 4B	New	286													-	-	4.74
13. Sibagat SRIP Camarines Sur, Region 5	New	262													-	-	30.22
	Canal Lining (km)														-	20.12	
14. Barotac Viejo SRIP Iloilo, Region 6	New	265													-	265	96.01
	Resto	459													-		
15. Umayam River Irrigation Project Agusan del Sur, Region 13	New	6,729					2,482	2,482						863	863	2,067	98.78

CLASSIFICATION/PROJECTS/PROVINCE/REGION	Overall Area (ha)	FY 2020 REVISED TARGETS							FY 2020 ACCOMPLISHMENT							Actual to Date *	Overall Project Status (%)
		CY 2020 Program	Carryover Program					Total CY 2020	CY 2020 Program	Carryover Program					Total CY 2020		
			CY 2019	CY 2018	CY 2017	CY 2016	CY 2015			CY 2019	CY 2018	CY 2017	CY 2016	CY 2015			
16. Small Irrigation Project (SIP) Nationwide	New Resto (ha)	Annual Program			420			420				280			280	7,446	99.96
	Earth Canal (km)						-				-			-	70		
	Canal Lining (km)			772.61			772.61				3.68			3.68	176.60		
	Canal Structures (Unit)			28			28				51			51	940		
	HDPE (km)						-				16.73			16.73	74.50		
	Gravel Road (km)						-							-	2.49		
17. Balikatan Sagip Patubig Program (BSPP) Nationwide	New Resto	Annual Program												-	564	99.38	
	Canal Lining (km)			0.00			0.00							-	129		
	Canal Structures (Unit)			1			1				16			-	62.91		
	HDPE (km)												16	-	143		
18. Quick Response Fund a. QRF (Communal Systems)	Resto						-							-	680	99.93	
	Earth Canal (km)						-							-	1.23		
	Canal Lining (km)						-				0.03			0.03	10.31		
	Canal Structures (Unit)						-				5.00			5	61		
b. QRF (National Systems)	Resto						-							-	39	99.86	
	Earth Canal (km)						-							-	11.39		
	Canal Lining (km)						-							-	4.45		
	Canal Structures (Unit)						-				3			3	56		
TOTAL FOR CONTINUING APPROPRIATIONS BALANCE FROM CY 2017	New Resto	7,542 459			588 522	- -	2,482 -	3,070 522				392 441	- -	863 -	1,255 441	17,632 15,848	
	Earth Canal (km)	-			23.90	-	-	23.90				4.40	-	-	4.40	435.35	
	Canal Lining (km)	-			876.78	-	-	876.78				36.86	-	-	36.86	1,684.57	
	Canal Structures (Unit)	-			633	-	-	633				340	-	-	340	4,698	
	COCONET (sqm)	-			-	-	-	-				-	-	-	-	3,750	
	HDPE (km)	-			3.06	-	-	3.06				17.22	-	-	17.22	229.74	
	Concrete Road (km)	-			36.64	-	-	36.64				0.85	-	-	0.85	89.45	
	Gravel Road (km)	-			9.99	-	-	9.99				1.20	-	-	1.20	141.92	
	C. BALANCE FROM CY 2016																
1. Ibato-Iraan SRIP Palawan, Region 4B	New Resto	860				160	160							-	200	63.98	
	Canal Lining (km)						-							-			
	Canal Structures (Unit)						-							-	2.03		
							-							-	37		
2. Talakag Irrigation Project Phase II Bukidnon, Region 10	New Resto	1,895					-					105		105	1,953	100.00	
	Canal Lining (km)					1.68	-							-			
	Canal Structures (Unit)					7	1.68 7					1.68 7		1.68 7	21.03 159		
3. Malaig RIS Ext'n. Project Lanao del Sur, Region 10	New Canal Lining (km)	1,665					22	22						22	22	1,610	100.00
	Canal Structures (Unit)													-	17.64 59		
4. Dabubu Irrigation Project Region 2	New						-							-	907	100.00	
5. Small Irrigation Project (SIP) Nationwide	New Resto					235	235					128		128	5,210	98.34	
	Canal Lining (km)						-							-	-		
	HDPE (km)						-					0.68		0.68	77.46		
	Canal Structures (Unit)						-							-	13.74		
							-					10		10	452		
6. For the Requirement of the Program Beneficiaries Development Component of the Comprehensive Agrarian Reform Program Nationwide	New Resto					155 289	155 289							-	318 268	100.00	
	Canal Lining (km)					3.63	3.63					0.37		0.37	16.38		
	Canal Structures (Unit)					77	77.00							-	68		

CLASSIFICATION/PROJECTS/PROVINCE/REGION	Overall Area (ha)	FY 2020 REVISED TARGETS							FY 2020 ACCOMPLISHMENT							Actual to Date *	Overall Project Status (%)
		CY 2020 Program	Carryover Program					Total CY 2020	CY 2020 Program	Carryover Program					Total CY 2020		
			CY 2019	CY 2018	CY 2017	CY 2016	CY 2015			CY 2019	CY 2018	CY 2017	CY 2016	CY 2015			
7. Extension/Expansion of Existing NIS Nationwide	New				150		150					100		100.00	1,046	91.26	
	Resto				-		-					-		-	162		
	Earth Canal (km)				-		-					-		-	5.62		
	Canal Lining (km)				6.72		6.72					-		-	36.86		
	HDPE (km)				-		-					-		-	9.00		
	Canal Structures (Unit)				15		15					-		-	138		
8. Extension/Expansion of Existing CIS Nationwide	New				194		194						-	2,344	100.00		
	Resto				-		-					-		-		704	
	Earth Canal (km)				-		-					-		-		3.40	
	Canal Lining (km)				11.80		11.80				1.10	1.10		51.24			
	HDPE (km)				0.96		0.96				-	-		1.18			
	Canal Structures (Unit)				4		4				-	-		249			
9. Coconet Slope Protection in National IS Nationwide	COCONET (sqm)				251,265		251,265					99,014		99,014	572,183	100.00	
10. Coconet Slope Protection in Communal IS Nationwide	COCONET (sqm)				18,715		18,715					604		604	76,881	100.00	
	Canal Lining (km)				-		-					-		-	2.00		
11. Resto./Rep. and Maintenance of IS (National Systems) Nationwide	Resto (ha)				275		275						-	-	2,114	100.00	
	Earth Canal (km)				-		-					9.50	9.50	173.51			
	Canal Lining (km)				42		41.80					0.69	0.69	250.02			
	Canal Structures (Unit)				118		118					1	1	432			
	Gravel Road (km)				-		-					-	-	12.06			
12. Resto./Rep. and Maintenance of IS (Communal Systems) Nationwide	New (ha)												-	-	113	99.55	
	Resto (ha)				204		204					83	83	6,034			
	Canal Lining (km)				39.20		39.20					0.21	0.21	317.52			
	Canal Structures (Unit)				86		86					-	-	1,041			
	HDPE (km)				0.36		0.36					-	-	39.89			
	Gravel Road (km)				-		-					-	-	1.00			
13. Improvement of Service Roads in Communal Irrigation Systems	Concrete Roads (km)				4.23		4.23					1.69		1.69	10.15	100.00	
	Canal Structures (Unit)				-		-					-		-	6		
14. Establishment Of Groundwater Pump Irrigation Project Nationwide	New				44		44					4		4	1,308	100.00	
	Resto				-		-					-		-	108		
	Canal Lining (km)				-		-					-		-	4.03		
	Canal Structures (Unit)				-		-					1	1	6			
TOTAL FOR CONTINUING APPROPRIATIONS BALANCE FROM CY 2016	New	4,420				938	22	960					337	22	359	15,009	
	Resto	-				768	-	768					83	-	83	9,390	
	Earth Canal (km)	-				-	-	-					9.50	-	9.50	182.53	
	Canal Lining (km)	-				104.82	-	104.82					4.74	-	4.74	796.21	
	COCONET (sqm)	-				269,980	-	269,980					99,618	-	99,618	649,064	
	Canal Structures (Unit)	-				307	-	307					19	-	19	2,647	
	Concrete Roads (km)	-				4.23	-	4.23					1.69	-	1.69	10.15	
	Gravel Road (km)	-				-	-	-					-	-	-	1.00	
D. BALANCE FROM CY 2015																	
1. Asbang SRIP Davao del Sur, Region 11	New (ha)	469													-	18.61	
Resto (ha)																	
2. Extension/Expansion of Existing IS 2.1 Other NIS (Extension/Expansion of EIS)	New (ha)					122	122						52	52	3,339	99.91	
	Resto (ha)					17	17						-	-	882		
	Earth Canal (km)					14.90	14.90						-	-	157.21		
	Canal Lining (km)					23.26	23.26						-	-	99.99		
	Canal Structures (Unit)					10	10					2	2	305			
2.2 Other CIS (Extension/Expansion of EIS)	New (ha)					98	98						50	50	3,247	100.00	
	Resto (ha)					-	-						-	-	717		
	Earth Canal (km)					8.94	8.94					5.00	5.00	22.59			
	Canal Lining (km)					25.81	25.81					-	-	101.32			
	Canal Structures (Unit)					35	35					-	-	341			

CLASSIFICATION/PROJECTS/PROVINCE/REGION	Overall Area (ha)	FY 2020 REVISED TARGETS							FY 2020 ACCOMPLISHMENT							Actual to Date *	Overall Project Status (%)
		CY 2020 Program	Carryover Program					Total CY 2020	CY 2020 Program	Carryover Program					Total CY 2020		
			CY 2019	CY 2018	CY 2017	CY 2016	CY 2015			CY 2019	CY 2018	CY 2017	CY 2016	CY 2015			
3. Resto/Repair and Maintenance of IS															-		
3.1 Resto./Rep. and Maintenance of IS (National Systems)	Resto (ha)						14	14						11	11	8,996	100.00
Nationwide	Earth Canal (km)						41.16	41.16						-	-	438.45	
	Canal Lining (km)						107.02	107.02						1.17	1.17	373.20	
	Canal Structures (Unit)						160	160						1	1	636	
3.2 Resto./Rep. and Maintenance of IS (Communal Systems)	Resto (ha)						297	297						14	14	13,397	99.97
Nationwide	Earth Canal (km)						25.47	25.47						11.92	11.92	308.45	
	Canal Lining (km)						177.02	177.02						10.84	10.84	463.85	
	Canal Structures (Unit)						343	343						22	22	1,437	
TOTAL FOR CONTINUING APPROPRIATION BALANCE FROM CY 2015	New (ha)	469					220	220		-	-	-	-	102	102	6,586	
	Resto (ha)	-					328	328		-	-	-	-	25	25	23,992	
	Earth Canal (km)	-					90.47	90.47		-	-	-	-	16.92	16.92	926.70	
	Canal Lining (km)	-					333.11	333.11		-	-	-	-	12.01	12.01	1,038.36	
	Canal Structures (Unit)	-					548	548		-	-	-	-	25	25	2,719	
SUB-TOTAL FOR CONTINUING APPROPRIATIONS	New (ha)	76,890	20,057	5,652	7,018	3,958	2,854	39,539	-	15,557	3,664	793	337	1,315	21,666	127,992	
	Resto (ha)	2,328	2,773	1,916	522	986	328	6,525	-	2,449	2,712	441	83	25	5,710	73,372	
	Earth Canal (km)	-	305.68	75.19	23.90	-	90.47	495.24	-	280.89	41.17	6.23	-	16.92	345.21	2,536.40	
	Canal Lining (km)	17.84	765.69	284.71	876.78	112.56	333.11	2,372.85	-	671.24	106.41	41.20	15.43	12.01	846.30	6,796.07	
	Canal Structures (Unit)	58	3,825	1,587	633	329	548	6,922	-	3,496	915	420	219	25	5,075	24,077	
	HDPE (km)	-	201.75	29.55	3.06	-	-	234.36	-	192.58	6.20	17.22	-	-	216.00	719.89	
	COCONET (sqm)	-	96,829	24,720	-	269,980	-	121,549	-	96,730	5,548	-	99,618	-	201,897	576,349	
	Concrete Roads (km)	-	50.50	7.61	36.64	-	-	94.74	-	49.58	2.71	0.85	-	-	53.14	264.60	
	Gravel Road (km)	-	233.62	60.73	9.99	-	-	304.33	-	185.68	11.41	9.59	14.07	-	220.75	786.31	
TOTAL FOR NIA IRRIGATION DEVELOPMENT PROGRAM	New (ha)	266,566	26,839	22,118	8,078	9,341	5,624	3,310	75,310	11,019	16,818	4,741	1,420	907	1,670	36,576	
	Resto (ha)	27,969	10,895	3,276	4,437	522	3,140	1,497	23,667	6,061	2,951	3,958	441	83	750	14,244	
	Earth Canal (km)	18.00	167.40	305.68	75.19	23.90	-	133.32	705.48	61.68	280.89	41.17	8.21	-	18.01	409.95	
	Canal Lining (km)	107.89	1,350.12	808.13	296.17	879.91	126.09	437.46	3,897.89	705.63	709.20	124.45	45.94	19.44	12.43	1,617.09	
	Canal Structures (Unit)	287	4,961	3,936	1,648	634	376	754	12,309	2,341	3,584	999	464	257	62	7,707	
	HDPE (km)	-	139.53	201.75	29.55	3.06	-	-	373.89	102.01	192.58	6.20	17.22	-	-	318.01	
	COCONET (sqm)	-	94,965	96,829	24,720	-	269,980	-	216,514	91,316	96,730	5,548	-	99,618	-	293,213	
	Concrete Roads (km)	-	67.06	50.50	10.84	36.64	-	-	165.04	49.70	49.58	5.94	0.85	-	-	106.07	
	Gravel Road (km)	2.46	426.17	263.65	62.86	9.99	11.44	-	774.11	259.65	190.98	13.55	9.59	14.07	-	487.83	



Republika ng Pilipinas
National Irrigation Administration
 (Pambansang Pangasiwaan ng Patubig)
 Lungsod ng Quezon

FINANCIAL STATUS OF IRRIGATION PROJECTS
 FY 2020 IRRIGATION PROGRAM (R.A. 11465)
 January 1 - December 31, 2020
 (All Amount in Thousand Pesos)

PARTICULARS	CY 2020 IRRIGATION PROGRAM						CARRY-OVER FUNDS				REGULAR CY 2020 PROGRAM & CARRY-OVER FUNDS			
	CY 2020 PROGRAM	Allotment Received	NBC 580	Net of SARO	NCA Received	Obligation	Unobligated Allotment as of Dec. 2019	Allotment Received	NCA Received	Obligation	Total CY 2020 Program	Total Available Allotment	NCA Received	Obligation
	(1)	(2)	(3)	(4)	(5)	(6)	(7)	(8)	(9)	(10)	(11=1+7+8)	(12=4+7+8)	(13=5+9)	(14=6+10)
PROGRAMS														
GENERAL ADMINISTRATION AND SUPPORT														
1. Operating Subsidy	5,759,150	5,759,150	-	5,759,150	5,759,150	4,266,412					5,759,150	5,759,150	5,759,150	4,266,412
2. Payment of NIA's Obl. to CE-Casecnan for Water delivery fee	3,546,506	3,546,506	-	3,546,506	3,546,506	3,546,506					3,546,506	3,546,506	3,546,506	3,546,506
3. Operation and Maintenance of NIS Pump IS	284,848	284,848	-	284,848	144,062	204,079					284,848	284,848	144,062	204,079
TOTAL GENERAL ADMINISTRATION AND SUPPORT	9,590,504	9,590,504	-	9,590,504	9,449,718	8,016,997	-	-	-	-	9,590,504	9,590,504	9,449,718	8,016,997
SUPPORT TO OPERATIONS														
1. Payment for ROW, Completion Works & Unpaid Claims and Damages of Completed Projects	110,000	110,000	-	110,000	37,000	12,924					110,000	110,000	37,000	12,924
2. Feasibility Study, Detailed Eng'g. & Pre-Eng'g. Activities (FSDE)	776,912	776,912	-	776,912	127,090	378,844					776,912	776,912	127,090	378,844
3. Irrigation Management Transfer Support Services (IMTSS)	94,800	94,800	-	94,800	60,052	53,812					94,800	94,800	60,052	53,812
4. Establishment of Farmland Geographic Information System (GIS)	87,175	87,175	-	87,175	17,432	30,786					87,175	87,175	17,432	30,786
TOTAL SUPPORT TO OPERATIONS	1,068,887	1,068,887	-	1,068,887	241,574	476,366	-	-	-	-	1,068,887	1,068,887	241,574	476,366
OPERATIONS	25,617,898	25,617,898	(947,600)	24,670,298	10,086,258	22,396,244	1,008,734	85,554	613,266	1,079,700	26,712,186	25,764,586	10,699,524	23,475,944
PROGRAM 1: Irrigation Systems Restoration Program	9,203,807	9,203,807	(60,000)	9,143,807	5,087,813	8,754,787	1,719	-	135,858	1,719	9,205,526	9,145,526	5,223,670	8,756,506
Sub-Program 1: National Irrigation Systems (NIS)	6,641,645	6,641,645	(60,000)	6,581,645	3,758,516	6,317,171	1,719	-	135,858	1,719	6,643,364	6,583,364	3,894,374	6,318,891
1. Restoration of National Irrigation Systems	1,156,337	1,156,337	-	1,156,337	555,499	1,097,286					1,156,337	1,156,337	555,499	1,097,286
2. Agos RIS Improvement Project	110,000	110,000	(60,000)	50,000	24,482	47,183			60,847		110,000	50,000	85,329	47,183
3. Lasang RIS Improvement Project, Davao Del Norte	200,000	200,000	-	200,000	62,673	197,153	1,719		75,011	1,719	201,719	201,719	137,684	198,872
4. Climate Change Adaptation Works (National Systems)	998,712	998,712	-	998,712	589,040	981,930					998,712	998,712	589,040	981,930
5. Repair of National Irrigation Systems	3,486,962	3,486,962	-	3,486,962	2,109,573	3,368,839					3,486,962	3,486,962	2,109,573	3,368,839
6. National Irrigation Sector Rehabilitation and Improvement Project (NISRIIP)	50,076	50,076	-	50,076	-	-					50,076	50,076	-	-
7. Coconet Slope Protection in National Irrigation Systems	95,315	95,315	-	95,315	49,791	93,749					95,315	95,315	49,791	93,749
8. Improvement of Service Roads in National Irrigation Systems	544,243	544,243	-	544,243	367,458	531,031					544,243	544,243	367,458	531,031
Sub-Program 2: Existing Communal Irrigation Systems (CIS)	2,370,348	2,370,348	-	2,370,348	1,198,226	2,252,739	-	-	-	-	2,370,348	2,370,348	1,198,226	2,252,739
9. Restoration of Communal Irrigation Systems	619,328	619,328	-	619,328	328,191	588,626					619,328	619,328	328,191	588,626
10. Repair of Communal Irrigation Systems	1,734,520	1,734,520	-	1,734,520	855,320	1,647,819					1,734,520	1,734,520	855,320	1,647,819
11. Coconet Slope Protection in Communal Irrigation Systems	16,500	16,500	-	16,500	14,715	16,294					16,500	16,500	14,715	16,294
Sub-Program 3: Other Irrigation Systems	191,814	191,814	-	191,814	131,071	184,876	-	-	-	-	191,814	191,814	131,071	184,876
12. Repair of Groundwater Pump Irrigation Systems	191,814	191,814	-	191,814	131,071	184,876					191,814	191,814	131,071	184,876
PROGRAM 2: Irrigation Systems Development Program	16,414,091	16,414,091	(887,600)	15,526,491	4,998,445	13,641,457	1,007,015	85,554	477,408	1,077,981	17,506,660	16,619,060	5,475,853	14,719,438
Sub-Program 1: New National Irrigation Systems (NIS)	6,346,386	6,346,386	(767,600)	5,578,786	1,506,827	4,613,902	739,837	-	689,698	730,330	7,086,223	6,318,623	2,196,525	5,344,232
13. Ilocos Norte-Ilocos Sur-Abra Irrigation Project	184,000	184,000	(84,000)	100,000	1,465	22,398	98,777		(31,514)	98,777	282,777	198,777	(30,049)	121,176
14. Ilocos Sur Integrated Irrigation Project	55,000	55,000	-	55,000	16	49,840					55,000	55,000	16	49,840
15. Lower Agno River Irrigation System Improvement Project	800,000	800,000	-	800,000	400,480	748,272	113,180		321,234	113,180	913,180	913,180	721,713	861,452
16. Lower Apayao River Irrigation Project (LARIP)	121,120	121,120	-	121,120	15,961	114,231	2,053		(14,468)	453	123,173	123,173	1,493	114,684
17. Dibulan River Irrigation Project, Isabela	28,362	28,362	-	28,362	285	28,110					28,362	28,362	285	28,110
18. Tumauni River Multipurpose Project	184,000	184,000	(53,340)	130,660	57,798	113,014	26,919		65,384	22,919	210,919	157,579	123,183	135,933
19. Balog-Balog MPIP, Phase II	789,757	789,757	-	789,757	137,186	604,483	82,683		3,220	80,944	872,440	872,440	140,406	685,427
20. North Lawis Irrigation Project	120,000	120,000	-	120,000	105,684	119,436	1,442		78,639	1,169	121,442	121,442	184,323	120,605
21. Upper Gumain Irrigation Project, Pampanga	55,000	55,000	-	55,000	53,634	55,000					55,000	55,000	53,634	55,000
22. Marikit Irrigation Project	16,500	16,500	-	16,500	979	16,388					16,500	16,500	979	16,388
23. Quipot Irrigation Project	150,000	150,000	-	150,000	63,016	139,477	-		58,015	-	150,000	150,000	121,030	139,477

PARTICULARS	CY 2020 IRRIGATION PROGRAM						CARRY-OVER FUNDS				REGULAR CY 2020 PROGRAM & CARRY-OVER FUNDS				
	CY 2020 PROGRAM	Allotment Received	NBC 580	Net of SARO	NCA Received	Obligation	Unobligated Allotment as of Dec. 2019	Allotment Received	NCA Received	Obligation	Total CY 2020 Program	Total Available Allotment	NCA Received	Obligation	
24. Panay River Basin Integrated Development Project (PRBIDP)	242,760	242,760	(142,760)	100,000	6,145	34,201	122,880		(76,307)	122,880	365,640	222,880	(70,163)	157,081	
25. Hilabangan Irrigation Project, Negros Occidental	166,774	166,774	(50,000)	116,774	5,039	99,900					166,774	116,774	5,039	99,900	
26. Jalaur River Multipurpose Project - Stage II	844,344	844,344	-	844,344	208,797	723,632	13,732			13,732	858,076	858,076	208,797	737,364	
	Peso Coun	269,344	269,344	-	269,344	208,797	148,632	13,732		13,732	283,076	283,076	208,797	162,364	
	Loan Procc	575,000	575,000	-	575,000	-	575,000				575,000	575,000	-	575,000	
27. Malogo Irrigation Project, Negros Occidental	55,000	55,000	-	55,000	8,166	45,492					55,000	55,000	8,166	45,492	
28. Amlan Irrigation Project	38,057	38,057	-	38,057	26,535	35,903	8,598		31,986	8,598	46,655	46,655	58,521	44,501	
29. Sta. Agueda-Datagon Irrigation Project	55,000	55,000	-	55,000	16,720	52,188	5,434		7,570	5,434	60,434	60,434	24,290	57,621	
30. Bohol Northeast Basin Multipurpose Dam Project	232,500	232,500	(132,500)	100,000	487	12,143	13,999		(27,108)	13,999	246,499	113,999	(26,621)	26,142	
31. Malinao Dam Improvement Project	100,000	100,000	-	100,000	15,349	28,242	9,355		29,636	9,355	109,355	109,355	44,985	37,597	
32. Tanjay-Bais River Irrigation Project	55,000	55,000	-	55,000	1,414	1,715					55,000	55,000	1,414	1,715	
33. Bugko Irrigation Project, Northern Samar	51,091	51,091	-	51,091	15,689	47,473					51,091	51,091	15,689	47,473	
34. Catarman-Bobon Irrigation Project, Samar (Northern)	20,067	20,067	-	20,067	16,854	20,067					20,067	20,067	16,854	20,067	
35. Pinipisakan Irrigation Project	68,750	68,750	-	68,750	29,442	68,081					68,750	68,750	29,442	68,081	
36. Lower Sibuguey I RIS Extension Project	38,000	38,000	-	38,000	19,900	37,754	91,047	-	72,009	89,151	129,047	129,047	91,909	126,905	
37. Manat NIP, Compostella Valley	81,304	81,304	-	81,304	21,363	75,199					81,304	81,304	21,363	75,199	
38. Upper Saug River Irrigation Project	100,000	100,000	-	100,000	13,927	99,778					100,000	100,000	13,927	99,778	
39. Kabulan 2 Multipurpose Irrigation & Power Project	300,000	300,000	(150,000)	150,000	21,447	125,954	61,065		21,266	61,065	361,065	211,065	42,713	187,019	
40. Lebak Integrated River Irrigation Project (LIRIP)	82,500	82,500	-	82,500	15,827	52,643	10,627		(8,138)	10,627	93,127	93,127	7,689	63,270	
41. Malitubog-Maridagao Irrigation Project Phase II	600,000	600,000	-	600,000	151,167	600,000	-		90,252		600,000	600,000	241,419	600,000	
42. Sapalan River Irrigation Project	330,000	330,000	-	330,000	44,959	225,143	72,676		66,947	72,676	402,676	402,676	111,906	297,819	
43. Upi Integrated Irrigation Project, Maguindanao	5,500	5,500	-	5,500	5,500	5,414					5,500	5,500	5,500	5,414	
44. Bislig City Integrated Dev't Project-IC	55,000	55,000	-	55,000	1,399	54,153					55,000	55,000	1,399	54,153	
45. Ditsaan-Ramain River IP	46,000	46,000	-	46,000	17,339	42,028	5,370		1,075	5,370	51,370	51,370	18,414	47,398	
46. Libang Irrigation Project, Agusan del Sur	275,000	275,000	(155,000)	120,000	6,859	116,152					275,000	120,000	6,859	116,152	
Sub-Program 2: Establishment of Pump Irrigation	2,508,542	2,508,542	-	2,508,542	389,625	2,419,455	49,403	85,554	(391,442)	132,754	2,643,499	2,643,499	(1,817)	2,552,209	
47. Alfonso Lista Pump Irrigation Project	460,000	460,000	-	460,000	50,609	445,263	4,592		16,335	2,389	464,592	464,592	66,944	447,651	
48. Chico River Pump Irrigation Project	1,448,807	1,448,807	-	1,448,807	43,747	1,406,945	44,811	85,554	(407,777)	130,365	1,579,172	1,579,172	(364,029)	1,537,310	
	Peso Coun	357,330	357,330	-	357,330	43,747	315,468	44,811	-	(407,777)	44,811	402,141	402,141	(364,029)	360,279
	Loan Procc	1,091,477	1,091,477	-	1,091,477	-	1,091,477	-	85,554	(0)	1,177,031	1,177,031	(0)	1,177,031	
49. Establishment of Groundwater Pump IP (EGPIP)	599,735	599,735	-	599,735	295,268	567,247					599,735	599,735	295,268	567,247	
Sub-Program 3: Small Reservoir Irrigation	1,440,625	1,440,625	(120,000)	1,320,625	292,156	816,759	217,775	-	179,152	214,898	1,658,400	1,538,400	471,308	1,031,657	
50. Bayaas Small Reservoir Irrigation Project	20,000	20,000	-	20,000	2,509	20,000	11,786		(3,135)	11,786	31,786	31,786	(625)	31,786	
51. Dumuloc Small Reservoir Irrigation Project	100,000	100,000	-	100,000	2,256	10,493	8,541		8,228	8,541	108,541	108,541	10,483	19,034	
52. Gaco Small Reservoir Irrigation Project	126,000	126,000	-	126,000	1,682	6,800	135,000		(38,346)	135,000	261,000	261,000	(36,664)	141,800	
53. Sulvec Small Reservoir Irrigation Project	50,000	50,000	-	50,000	28,975	49,484	20,008		4,805	20,008	70,008	70,008	33,780	69,492	
54. Bulo Small Reservoir Irrigation Project	50,000	50,000	-	50,000	34,393	40,669	5,304		15,799	2,427	55,304	55,304	50,192	43,097	
55. Balbalungao Small Reservoir Irrigation Project	170,000	170,000	-	170,000	73,247	168,242	4,294		34,176	4,294	174,294	174,294	107,423	172,536	
56. Macalelon Small Reservoir Irrigation Project	170,955	170,955	-	170,955	83,807	165,808	-		(2,565)		170,955	170,955	81,242	165,808	
57. Ibingan Small Reservoir Irrigation Project	84,170	84,170	-	84,170	11,158	66,348	7,348		(2,656)	7,348	91,518	91,518	8,502	73,696	
58. Bayuyan Small Reservoir Irrigation Project	100,000	100,000	-	100,000	126	5,670	2,892		35,763	2,892	102,892	102,892	35,888	8,562	
59. Benliw Small Reservoir Irrigation Project	27,500	27,500	-	27,500	5,027	16,493	4,539		35,342	4,539	32,039	32,039	40,370	21,031	
60. Cabano Small Reservoir Irrigation Project	100,000	100,000	-	100,000	71	3,215	2,189		(12,819)	2,189	102,189	102,189	(12,748)	5,404	
61. Hibale Small Reservoir Irrigation Project	100,000	100,000	-	100,000	3,035	87,218	2,933		14,518	2,933	102,933	102,933	17,553	90,151	
62. Mabini-Cayacay SRIP	27,500	27,500	-	27,500	12,378	21,010					27,500	27,500	12,378	21,010	
63. Bonot-Bonot Small Reservoir Irrigation Project	27,500	27,500	-	27,500	7,276	9,816	3,195		47,632	3,195	30,695	30,695	54,908	13,011	
64. Calunasan Small Reservoir Irrigation Project	50,000	50,000	-	50,000	804	30,266	3,414		18,123	3,414	53,414	53,414	18,926	33,679	
65. Tulunan Small Reservoir Irrigation Project	237,000	237,000	(120,000)	117,000	25,412	115,228	6,332		24,287	6,332	243,332	123,332	49,700	121,560	
Sub-Program 4: Special Irrigation	5,081,503	5,081,503	-	5,081,503	2,113,782	4,808,689	-	-	-	-	5,081,503	5,081,503	2,113,782	4,808,689	
66. Balikatan Sagip Patubig Program (BSPP)	58,025	58,025	-	58,025	19,185	54,939					58,025	58,025	19,185	54,939	
67. Small Irrigation Projects (SIP)	5,023,478	5,023,478	-	5,023,478	2,094,597	4,753,749					5,023,478	5,023,478	2,094,597	4,753,749	
Sub-Program 5: Extension/Expansion of Existing Irrigation Systems	450,603	450,603	-	450,603	228,410	405,973	-	-	-	-	450,603	450,603	228,410	405,973	
68. Extension/Expansion of Existing National Irrigation Systems	81,950	81,950	-	81,950	50,037	73,888					81,950	81,950	50,037	73,888	
69. Extension/Expansion of Existing Communal Irrigation Systems	368,653	368,653	-	368,653	178,373	332,085					368,653	368,653	178,373	332,085	
Sub-Program 6: Other Irrigation Systems	586,432	586,432	-	586,432	467,646	576,679	-	-	-	-	586,432	586,432	467,646	576,679	
70. Comprehensive Agrarian Reform Program-IC (CARP-IC)	586,432	586,432	-	586,432	467,646	576,679					586,432	586,432	467,646	576,679	

PARTICULARS	CY 2020 IRRIGATION PROGRAM						CARRY-OVER FUNDS				REGULAR CY 2020 PROGRAM & CARRY-OVER FUNDS			
	CY 2020 PROGRAM	Allotment Received	NBC 580	Net of SARO	NCA Received	Obligation	Unobligated Allotment as of Dec. 2019	Allotment Received	NCA Received	Obligation	Total CY 2020 Program	Total Available Allotment	NCA Received	Obligation
TOTAL FOR OPERATIONS	25,617,898	25,617,898	(947,600)	24,670,298	10,086,258	22,396,244	1,008,734	85,554	613,266	1,079,700	26,712,186	25,764,586	10,699,524	23,475,944
SUB-TOTAL FOR FY 2020 PROGRAM	36,277,289	36,277,289	(947,600)	35,329,689	19,777,550	30,889,606	1,008,734	85,554	613,266	1,079,700	37,371,577	36,423,977	20,390,816	31,969,306
OTHER SOURCES														
SECTION 7														
1. Repair of National Irrigation Systems		120,223	-	120,223	40,021	116,903					120,223	120,223	40,021	116,903
2. Climate Change Adaptation Works (National Systems)		6,000	-	6,000	-	6,000					6,000	6,000	-	6,000
3. Integrated Resources and Environment Management Project - International Fund for Agricultural Development		16,346	-	16,346	-	-					16,346	16,346	-	-
4. Improvement of Service Roads in National Irrigation Systems		3,190		3,190	-	-					3,190	3,190	-	-
5. Repair of Communal Irrigation Systems		71,565		71,565	5,259	70,300					71,565	71,565	5,259	70,300
6. Restoration of Communal Irrigation Systems		61,956		61,956	18	59,016					61,956	61,956	18	59,016
7. Climate Change Adaptation Works (Communal Irrig. Systems)		3,000		3,000	-	3,000					3,000	3,000	-	3,000
8. Nassiping PIP, Cagayan		4,048		4,048	515	4,048					4,048	4,048	515	4,048
9. Dibulan River Irrigation Project, Isabela		5,059		5,059	-	5,059					5,059	5,059	-	5,059
10. Dabubu Irrigation Project, Isabela		6,000		6,000	-	6,000					6,000	6,000	-	6,000
11. Jalaur River Multipurpose Project - Stage II, Iloilo		100,000		100,000	-	-					100,000	100,000	-	-
12. Establishment of Groundwater Pump IP (EGPIP)		10,000		10,000	885	9,821					10,000	10,000	885	9,821
13. Small Irrigation Projects (SIP)		60,000		60,000	3,183	55,640					60,000	60,000	3,183	55,640
TOTAL FOR SECTION 7	-	467,387	-	467,387	49,881	335,787	-	-	-	-	467,387	467,387	49,881	335,787
TOTAL FOR FY 2020 PROGRAM	36,277,289	36,744,676	(947,600)	35,797,076	19,827,431	31,225,393	1,008,734	85,554	613,266	1,079,700	37,838,964	36,891,364	20,440,697	32,305,094
II. CONTINUING APPROPRIATIONS														
II. A. BALANCE FROM CY 2019 PROGRAM														
PROGRAMS														
GENERAL ADMINISTRATION AND SUPPORT														
1. Operation and Maintenance of NIS Pump IS							64,120		(43,759)	48,400	64,120	64,120	(43,759)	48,400
2. Operating Requirement														
a. Operation Subsidy							392,037			348,234	392,037	392,037	-	348,234
b. Irrigation Fee Subsidy							383,689			383,689	383,689	383,689	-	383,689
3. Payment of NIA's Obligation to CE-Casencan for Water delivery fee											-	-	-	-
4. Repair and Maintenance of Irrigation Systems											-	-	-	-
a. Communal Irrigation Systems							264,581		1,238,905	247,564	264,581	264,581	1,238,905	247,564
b. National Irrigation Systems							236,032	(9,400)	2,128,782	230,584	226,632	226,632	2,128,782	230,584
5. Repair of Groundwater Pump Irrigation Systems							10,380		193,918	10,127	10,380	10,380	193,918	10,127
TOTAL GENERAL ADMINISTRATION AND SUPPORT	-	-			-	-	1,350,838	(9,400)	3,517,846	1,268,598	1,341,438	1,341,438	3,517,846	1,268,598
SUPPORT TO OPERATIONS														
1. Payment for ROW, Completion Works & Unpaid Claims and Damages of Completed Projects							200,483		(200,483)		200,483	200,483	(200,483)	-
2. Heavy Equipment Procurement for Irrigation Systems							32,500				32,500	32,500	-	-
3. Feasibility Study, Detailed Eng'g. & Pre-Eng'g. Activities (FSDE)							220,539		114,431	154,342	220,539	220,539	114,431	154,342
4. Irrigation Management Transfer Support Services (IMTSS)							41,304		(19,037)	39,843	41,304	41,304	(19,037)	39,843
TOTAL SUPPORT TO OPERATIONS	-	-			-	-	494,826	-	(105,089)	194,185	494,826	494,826	(105,089)	194,185
OPERATIONS														
PROGRAM 1: Irrigation Systems Restoration Program							160,661	-	1,006,905	158,864	160,661	160,661	1,006,905	158,864
Sub-Program 1: Existing National Irrigation Systems (NIS)							89,760	-	711,862	88,857	89,760	89,760	711,862	88,857
1. Restoration of National Irrigation Systems							10,454		75,906	10,322	10,454	10,454	75,906	10,322
2. Climate Change Adaptation Works (National Systems)							36,623		249,963	36,115	36,623	36,623	249,963	36,115
3. Coconet Slope Protection in National Irrigation Systems							9,859		74,241	9,769	9,859	9,859	74,241	9,769
4. Improvement of Service Roads in National Irrigation Systems							32,823		311,752	32,651	32,823	32,823	311,752	32,651
Sub-Program 2: Existing Communal Irrigation Systems (CIS)	-	-			-	-	64,200	-	283,510	63,394	64,200	64,200	283,510	63,394
5. Restoration of Communal Irrigation Systems							50,285		147,076	49,626	50,285	50,285	147,076	49,626
6. Climate Change Adaptation Works (Communal Systems)							12,767		102,498	12,641	12,767	12,767	102,498	12,641
7. Improvement of Service Roads in Communal Irrigation Systems							1,148		33,936	1,127	1,148	1,148	33,936	1,127
Sub-Program 3: Other Irrigation Systems	-	-			-	-	6,701	-	11,533	6,614	6,701	6,701	11,533	6,614

PARTICULARS	CY 2020 IRRIGATION PROGRAM						CARRY-OVER FUNDS				REGULAR CY 2020 PROGRAM & CARRY-OVER FUNDS			
	CY 2020 PROGRAM	Allotment Received	NBC 580	Net of SARO	NCA Received	Obligation	Unobligated Allotment as of Dec. 2019	Allotment Received	NCA Received	Obligation	Total CY 2020 Program	Total Available Allotment	NCA Received	Obligation
8. Restoration of Groundwater Pump Irrigation Systems							2,908		11,533	2,821	2,908	2,908	11,533	2,821
9. Comprehensive Agrarian Reform Program-IC (CARP-IC)							3,793		-	3,793	3,793	3,793	-	3,793
PROGRAM 2: Irrigation Systems Development Program							673,781	(35,000)	2,788,798	603,670	638,781	638,781	2,788,798	603,670
Sub-Program 1: New National Irrigation Systems							41,350	(7,000)	161,241	32,828	34,350	34,350	161,241	32,828
10. Bongabong River Irrigation Project							38,762		146,545	38,762	38,762	38,762	146,545	38,762
11. Lower Sibuguey II RIS Extension Project							492		1,796	492	492	492	1,796	492
12. Tandubas Irrigation Project							2,096	(7,000)	12,900	(6,426)	(4,904)	(4,904)	12,900	(6,426)
Sub-Program 2: Establishment of Pump Irrigation Systems							50,211	-	391,048	49,625	50,211	50,211	391,048	49,625
13. Establishment of Groundwater Pump IP (EGPIP)							50,211		391,048	49,625	50,211	50,211	391,048	49,625
Sub-Program 3: Small Reservoir Irrigation Systems	-	-			-	-	39,315	-	38,413	22,511	39,315	39,315	38,413	22,511
14. Barbar Small Reservoir Irrigation Project							16,747		(5,232)	1,047	16,747	16,747	(5,232)	1,047
15. Marimay Small Reservoir Irrigation Project							2,339		(1,135)	2,339	2,339	2,339	(1,135)	2,339
16. Upper Tabuating Small Reservoir Irrigation Project							12,298		(2,237)	11,194	12,298	12,298	(2,237)	11,194
17. Hibulangan Small Reservoir Irrigation Project							7,931		47,017	7,931	7,931	7,931	47,017	7,931
Sub-Program 4: Special Irrigation Systems	-	-			-	-	314,814	(28,000)	1,270,489	277,322	286,814	286,814	1,270,489	277,322
18. Balikatan Sagip Patubig Program (BSPP)							9,956		61,769	7,920	9,956	9,956	61,769	7,920
19. Small Irrigation Projects (SIP)							304,858	(28,000)	1,208,720	269,402	276,858	276,858	1,208,720	269,402
Sub-Program 5: Extension/Expansion of Existing Irrigation Systems	-	-			-	-	228,090	-	927,608	221,384	228,090	228,090	927,608	221,384
20. Extension/Expansion of Existing Communal Irrigation Systems							85,610		427,814	79,216	85,610	85,610	427,814	79,216
21. Extension/Expansion of Existing National Irrigation Systems							142,480		499,794	142,168	142,480	142,480	499,794	142,168
TOTAL FOR OPERATIONS	-	-	-	-	-	-	834,442	(35,000)	3,795,702	762,535	799,442	799,442	3,795,702	762,535
TOTAL FOR CY 2019 PROGRAM	-	-	-	-	-	-	2,680,106	(44,400)	7,208,460	2,225,318	2,635,706	2,635,706	7,208,460	2,225,318
OTHER SOURCES														
CALAMITY FUND														
1. National Disaster Risk Reduction and Management Fund							163,590	14,819	(22,307)	178,073	178,409	178,409	(22,307)	178,073
SECTION 9														
1. Extension/Expansion of Existing Communal Irrigation Systems									5,000		-	-	5,000	-
2. Climate Change Adaptation Works (Communal Systems)									3,000		-	-	3,000	-
3. Climate Change Adaptation Works (National Systems)									15,000		-	-	15,000	-
4. Extension/Expansion of Existing National Irrigation Systems							25,000		24,972	25,000	25,000	25,000	24,972	25,000
5. Repair of Communal Irrigation Systems							56,000		38,319	56,000	56,000	56,000	38,319	56,000
6. Repair of National Irrigation Systems							126,508		216,910	126,256	126,508	126,508	216,910	126,256
7. Restoration of Communal Irrigation Systems							7,000		5,753	7,000	7,000	7,000	5,753	7,000
8. Improvement of Service Roads in National Irrigation Systems							80,000		107,307	79,993	80,000	80,000	107,307	79,993
9. Small Irrigation Projects (SIP), Nationwide							19,874		35,180	19,874	19,874	19,874	35,180	19,874
10. Balog-Balog MPIP, Phase II, Tarlac							35,371		82,000	35,296	35,371	35,371	82,000	35,296
11. Casecnan Multipurpose Irrigation and Power Project, Ph II							164,360		62,566	163,948	164,360	164,360	62,566	163,948
12. Pinipisakan Irrigation Project, Northern Samar							30,267		4,641	30,267	30,267	30,267	4,641	30,267
TOTAL SECTION 9	-	-	-	-	-	-	544,380	-	600,648	543,634	544,380	544,380	600,648	543,634
TOTAL FOR OTHER SOURCES	-	-	-	-	-	-	707,970	14,819	578,341	721,708	722,789	722,789	578,341	721,708
TOTAL FOR CONTINUING APPROPRIATIONS	-	-	-	-	-	-	3,388,076	(29,581)	7,786,801	2,947,025	3,358,495	3,358,495	7,786,801	2,947,025
GRAND TOTAL FOR CY 2020 IRRIGATION PROGRAM	36,277,289	36,744,676	(947,600)	35,797,076	19,827,431	31,225,393	4,396,811	55,973	8,400,067	4,026,725	41,197,460	40,249,860	28,227,498	35,252,119

NOTE:

CARRY-OVER FUNDS includes balances from CY 2019 Regular Appropriations
Unaudited Financial Status as of June 30, 2020



Republika ng Pilipinas
National Irrigation Administration

(Pambansang Pangasiwaan ng Patubig)

Lungsod ng Quezon

STATUS OF FUNDS

GAA 2020

as of December 31, 2020 - F2

(In Thousand Pesos)

PATICULARS	GAA 1	SARO a	NBC 580 b	NET OF SARO 2=a+b	NCA 3	Obligation 4	Disbursement 5	BALANCES					UTILIZATION RATE		
								Unreleased SARO 6=1-a	Unfunded SARO 7=2-3	Unobligated SARO 8=2-4	Unutilized NCA 9=3-5	Unpaid Obligation 10=4-5	Obligation/ SARO 11=4/2	Disbursement/ NCA 12=5/3	Disbursement/ Obligation 13=5/4
PROGRAMS															
I. GENERAL ADMINISTRATION AND SUPPORT	9,590,504	9,590,504	-	9,590,504	9,449,718	8,016,997	6,852,700	-	140,786	1,573,507	2,597,018	1,164,297	84%	73%	85%
II. SUPPORT TO OPERATIONS	1,068,887	1,068,887	-	1,068,887	241,574	476,366	145,180	-	827,313	592,521	96,395	331,186	45%	60%	30%
III. OPERATIONS	25,617,898	25,617,898	(947,600)	24,670,298	10,086,258	22,396,244	9,388,599	-	14,584,040	2,274,054	697,659	13,007,644	91%	93%	42%
PROGRAM 1: IRRIGATION SYSTEMS RESTORATION PROGRAM	9,203,807	9,203,807	(60,000)	9,143,807	5,087,813	8,754,787	4,889,650	-	4,055,994	389,021	198,163	3,865,137	96%	96%	56%
SUB-PROGRAM 1: NATIONAL IRRIGATION SYSTEMS	6,641,645	6,641,645	(60,000)	6,581,645	3,758,516	6,317,171	3,613,780	-	2,823,129	264,474	144,736	2,703,392	96%	96%	57%
SUB-PROGRAM 2: COMMUNAL IRRIGATION SYSTEMS	2,370,348	2,370,348	-	2,370,348	1,198,226	2,252,739	1,149,320	-	1,172,122	117,609	48,906	1,103,419	95%	96%	51%
SUB-PROGRAM 3: OTHER IRRIGATION SYSTEMS	191,814	191,814	-	191,814	131,071	184,876	126,550	-	60,743	6,938	4,521	58,326	96%	97%	68%
PROGRAM 1: IRRIGATION SYSTEMS RESTORATION PROGRAM	16,414,091	16,414,091	(887,600)	15,526,491	4,998,445	13,641,457	4,498,949	-	10,528,046	1,885,034	499,496	9,142,508	88%	90%	33%
SUB-PROGRAM 1: NEW NATIONAL IRRIGATION	6,346,386	6,346,386	(767,600)	5,578,786	1,506,827	4,613,902	1,248,734	-	4,071,959	964,884	258,092	3,365,168	83%	83%	27%
SUB-PROGRAM 2: ESTABLISHMENT OF PUMP IRRIGATION	2,508,542	2,508,542	-	2,508,542	389,625	2,419,455	346,030	-	2,118,917	89,087	43,594	2,073,425	96%	89%	14%
SUB-PROGRAM 3: SMALL RESERVOIR IRRIGATION	1,440,625	1,440,625	(120,000)	1,320,625	292,156	816,759	279,597	-	1,028,469	503,866	12,559	537,162	62%	96%	34%
SUB-PROGRAM 4: SPECIAL IRRIGATION	5,081,503	5,081,503	-	5,081,503	2,113,782	4,808,689	1,943,673	-	2,967,721	272,814	170,109	2,865,016	95%	92%	40%
SUB-PROGRAM 5: EXTENSION/EXPANSION OF EXISTING IRRIGATION SYSTEMS	450,603	450,603	-	450,603	228,410	405,973	225,099	-	222,193	44,630	3,311	180,874	90%	99%	55%
SUB-PROGRAM 6: OTHER IRRIGATION SYSTEMS	586,432	586,432	-	586,432	467,646	576,679	455,816	-	118,786	9,753	11,830	120,863	98%	97%	79%
TOTAL	36,277,289	36,277,289	(947,600)	35,329,689	19,777,550	30,889,606	16,386,479	-	15,552,139	4,440,083	3,391,071	14,503,127	87%	83%	53%
OTHERS															
I. SECTION 7 OF CY 2020		467,387	-	467,387	49,881	335,787	44,499	-	417,506	131,600	5,382	291,288	72%	89%	13%
TOTAL		467,387	-	467,387	49,881	335,787	44,499	-	417,506	131,600	5,382	291,288	72%	89%	13%

PATICULARS	GAA	SARO	NBC 580	NET OF SARO	NCA	Obligation	Disbursement	BALANCES					UTILIZATION RATE			
								Unreleased SARO 6=1-a	Unfunded SARO 7=2-3	Unobligated SARO 8=2-4	Unutilized NCA 9=3-5	Unpaid Obligation 10=4-5	Obligation/ SARO 11=4/2	Disbursement/ NCA 12=5/3	Disbursement/ Obligation 13=5/4	
																1
GENERAL ADMINISTRATION AND SUPPORT																
1 Operating Subsidy	5,759,150	5,759,150	-	5,759,150	5,759,150	4,266,412	3,712,457	-	-	1,492,738	2,046,693	553,955	74%	64%	87%	
2 Payment of NIA's Obligation to CE-Casecnan for Water delivery fee	3,546,506	3,546,506	-	3,546,506	3,546,506	3,546,506	3,035,420	-	-	-	511,086	511,086	100%	86%	86%	
3 Operation and Maintenance of NIS Pump Irrigation Systems	284,848	284,848	-	284,848	144,062	204,079	104,823	-	140,786	80,769	39,239	99,256	72%	73%	51%	
TOTAL GENERAL ADMINISTRATION AND SUPPORT	9,590,504	9,590,504	-	9,590,504	9,449,718	8,016,997	6,852,700	-	140,786	1,573,507	2,597,018	1,164,297	84%	73%	85%	
SUPPORT TO OPERATIONS																
1 Payment for ROW, Completion Works & Unpaid Claims and Damages of Completed Projects	110,000	110,000	-	110,000	37,000	12,924	12,780	-	73,000	97,076	24,220	144	12%	35%	99%	
2 Feasibility Study & Detailed Engineering (FSDE) and Pre-Engineering Activities of Various Projects	776,912	776,912	-	776,912	127,090	378,844	89,978	-	649,822	398,068	37,112	288,866	49%	71%	24%	
3 Irrigation Management Transfer Support Services (IMTSS)	94,800	94,800	-	94,800	60,052	53,812	27,557	-	34,748	40,988	32,495	26,255	57%	46%	51%	
4 Establishment of Farmland Geographic Information System (GIS)	87,175	87,175	-	87,175	17,432	30,786	14,864	-	69,743	56,389	2,568	15,922	35%	85%	48%	
TOTAL SUPPORT TO OPERATIONS	1,068,887	1,068,887	-	1,068,887	241,574	476,366	145,180	-	827,313	592,521	96,395	331,186	45%	60%	30%	
OPERATIONS																
PROGRAM 1: Irrigation Systems Restoration Program																
Sub-Program 1: National Irrigation Systems	6,641,645	6,641,645	(60,000)	6,581,645	3,758,516	6,317,171	3,613,780	-	2,823,129	264,474	144,736	2,703,392	96%	96%	57%	
1 Restoration of National Irrigation Systems	1,156,337	1,156,337	-	1,156,337	555,499	1,097,286	544,308	-	600,838	59,051	11,190	552,977	95%	98%	50%	
2 Agos RIS Improvement Project, Quezon	110,000	110,000	(60,000)	50,000	24,482	47,183	18,325	-	25,518	2,817	6,157	28,858	94%	75%	39%	
3 Lasang RIS Improvement Project, Davao del Norte	200,000	200,000	-	200,000	62,673	197,153	62,673	-	137,327	2,847	-	134,480	99%	100%	32%	
4 Climate Change Adaptation Works (National Systems)	998,712	998,712	-	998,712	589,040	981,930	566,651	-	409,672	16,782	22,389	415,279	98%	96%	58%	
5 Repair of National Irrigation Systems	3,486,962	3,486,962	-	3,486,962	2,109,573	3,368,839	2,014,209	-	1,377,389	118,123	95,364	1,354,630	97%	95%	60%	
6 National Irrigation Sector Rehabilitation and Improvement Project (NISRIIP)	50,076	50,076	-	50,076	-	-	-	-	50,076	50,076	-	-	0%			
7 Coconet Slope Protection in National Irrigation Systems	95,315	95,315	-	95,315	49,791	93,749	48,768	-	45,524	1,566	1,023	44,982	98%	98%	52%	
8 Improvement of Service Roads in National Irrigation Systems	544,243	544,243	-	544,243	367,458	531,031	358,846	-	176,785	13,212	8,612	172,185	98%	98%	68%	
Sub-Program 2: Communal Irrigation Systems	2,370,348	2,370,348	-	2,370,348	1,198,226	2,252,739	1,149,320	-	1,172,122	117,609	48,906	1,103,419	95%	96%	51%	
9 Restoration of Communal Irrigation Systems	619,328	619,328	-	619,328	328,191	588,626	320,863	-	291,137	30,702	7,329	267,763	95%	98%	55%	
10 Repair of Communal Irrigation Systems	1,734,520	1,734,520	-	1,734,520	855,320	1,647,819	813,743	-	879,200	86,701	41,577	834,077	95%	95%	49%	
12 Coconet Slope Protection in Communal Irrigation Systems	16,500	16,500	-	16,500	14,715	16,294	14,715	-	1,785	206	-	1,579	99%	100%	90%	
Sub-Program 3: Other Irrigation Systems	191,814	191,814	-	191,814	131,071	184,876	126,550	-	60,743	6,938	4,521	58,326	96%	97%	68%	
14 Repair of Groundwater Pump Irrigation Systems	191,814	191,814	-	191,814	131,071	184,876	126,550	-	60,743	6,938	4,521	58,326	96%	97%	68%	
PROGRAM 2: Irrigation Systems Development Program																
Sub-Program 1: New National Irrigation	6,346,386	6,346,386	(767,600)	5,578,786	1,506,827	4,613,902	1,248,734	-	4,071,959	964,884	258,092	3,365,168	83%	83%	27%	
17 Ilocos Norte Irrigation Project - Stage 2, Ilocos Norte	184,000	184,000	(84,000)	100,000	1,465	22,398	1,465	-	98,535	77,602	-	20,933	22%	100%	7%	
18 Ilocos Sur Transbasin Project, Ilocos Sur	55,000	55,000	-	55,000	16	49,840	16	-	54,984	5,160	-	49,824	91%	100%	0%	
19 Lower Agno River Irrigation System Improvement Project, Pangasinan	800,000	800,000	-	800,000	400,480	748,272	320,500	-	399,520	51,728	79,979	427,771	94%	80%	43%	
20 Lower Apayao River Irrigation Project (LARIP), Apayao	121,120	121,120	-	121,120	15,961	114,231	15,951	-	105,159	6,889	10	98,279	94%	100%	14%	
21 Dibulan River Irrigation Project, Isabela	28,362	28,362	-	28,362	285	28,110	285	-	28,077	252	-	27,825	99%	100%	1%	
22 Tumauni River Multipurpose Project, Isabela	184,000	184,000	(53,340)	130,660	57,798	113,014	57,798	-	72,862	17,646	0	55,216	86%	100%	51%	
23 Balog-Balog Multipurpose Project Phase II, Tarlac	789,757	789,757	-	789,757	137,186	604,483	137,186	-	652,571	185,274	-	467,297	77%	100%	23%	
24 North Lawis Palongohan IP, Zambales	120,000	120,000	-	120,000	105,684	119,436	105,684	-	14,316	564	-	13,752	100%	100%	88%	
25 Upper Gumain River Irrigation Project, Pampanga	55,000	55,000	-	55,000	53,634	55,000	53,634	-	1,366	0	-	1,366	100%	100%	98%	
26 Marikit Irrigation Project, Nueva Ecija	16,500	16,500	-	16,500	979	16,388	979	-	15,521	112	-	15,408	99%	100%	6%	
27 Quipot Irrigation Project, Quezon	150,000	150,000	-	150,000	63,016	139,477	33,333	-	86,984	10,523	29,683	106,145	93%	53%	24%	
28 Panay River Basin Integrated Development Project (PRBIDP), Capiz	242,760	242,760	(142,760)	100,000	6,145	34,201	6,145	-	93,855	65,799	-	28,056	34%	100%	18%	
29 Hilabangan Irrigation Project, Negros Occidental	166,774	166,774	(50,000)	116,774	5,039	99,900	5,039	-	111,735	16,874	-	94,861	86%	100%	5%	

PATICULARS	GAA	SARO	NBC 580	NET OF SARO	NCA	Obligation	Disbursement	BALANCES					UTILIZATION RATE		
								Unreleased SARO 6=1-a	Unfunded SARO 7=2-3	Unobligated SARO 8=2-4	Unutilized NCA 9=3-5	Unpaid Obligation 10=4-5	Obligation/ SARO 11=4/2	Disbursement/ NCA 12=5/3	Disbursement/ Obligation 13=5/4
1	a	b	2=a+b	3	4	5									
30 Jalauro River Multipurpose Project - Stage II, Iloilo	844,344	844,344	-	844,344	208,797	723,632	125,924	-	635,547	120,712	82,874	597,709	86%	60%	17%
Peso Counterpart	269,344	269,344	-	269,344	208,797	148,632	125,924	-	60,547	120,712	82,874	22,709	55%	60%	85%
Loan Proceeds	575,000	575,000	-	575,000	-	575,000	-	-	575,000	-	-	575,000	100%		0%
31 Malogo Irrigation Project, Negros Occidental	55,000	55,000	-	55,000	8,166	45,492	8,166	-	46,834	9,508	-	37,326	83%	100%	18%
32 Amlan Irrigation Project, Negros Oriental	38,057	38,057	-	38,057	26,535	35,903	24,535	-	11,522	2,154	2,000	11,368	94%	92%	68%
33 Sta. Agueda-Datagon Irrigation Project, Negros Oriental	55,000	55,000	-	55,000	16,720	52,188	16,720	-	38,280	2,812	-	35,468	95%	100%	32%
34 Bohol Northeast Basin Multi-purpose Dam Project, Bohol	232,500	232,500	(132,500)	100,000	487	12,143	487	-	99,513	87,857	-	11,656	12%	100%	4%
35 Malinao Dam Improvement Project, Bohol	100,000	100,000	-	100,000	15,349	28,242	15,349	-	84,651	71,758	-	12,893	28%	100%	54%
36 Tanjay-Bais River Irrigation Project, Negros Oriental	55,000	55,000	-	55,000	1,414	1,715	1,414	-	53,586	53,285	-	301	3%	100%	82%
37 Bugko Irrigation Project, Northern Samar	51,091	51,091	-	51,091	15,689	47,473	476	-	35,402	3,618	15,212	46,997	93%	3%	1%
38 Catarman- Bobon Irrigation Project, Northern Samar	20,067	20,067	-	20,067	16,854	20,067	16,818	-	3,213	-	36	3,249	100%	100%	84%
39 Pinipisanan Irrigation Project, Northern Samar	68,750	68,750	-	68,750	29,442	68,081	17,830	-	39,308	669	11,612	50,251	99%	61%	26%
40 Lower Sibuguey I RIS Extension Project, Zamboanga Sibugay	38,000	38,000	-	38,000	19,900	37,754	19,390	-	18,100	246	510	18,364	99%	97%	51%
41 Manat NIP, Compostella Valley	81,304	81,304	-	81,304	21,363	75,199	21,363	-	59,941	6,105	-	53,835	92%	100%	28%
42 Upper Saug River Irrigation Project, Davao Del Norte	100,000	100,000	-	100,000	13,927	99,778	13,927	-	86,073	222	-	85,851	100%	100%	14%
43 Kabulan 2 Multipurpose Irrigation & Power Project, Sultan Kudarat	300,000	300,000	(150,000)	150,000	21,447	125,954	20,101	-	128,553	24,046	1,346	105,853	84%	94%	16%
44 Lebak Integrated River Irrigation Project, Sultan Kudarat	82,500	82,500	-	82,500	15,827	52,643	2,747	-	66,673	29,857	13,080	49,896	64%	17%	5%
45 Malitubog-Maridagao Irrigation Project Phase II, North Cotabato	600,000	600,000	-	600,000	151,167	600,000	146,536	-	448,833	-	4,631	453,464	100%	97%	24%
46 Sapalan River Irrigation Project, Maguindanao	330,000	330,000	-	330,000	44,959	225,143	29,358	-	285,041	104,857	15,601	195,785	68%	65%	13%
47 Upi Integrated Irrigation Project, Maguindanao	5,500	5,500	-	5,500	5,500	5,414	5,225	-	-	86	275	189	98%	95%	97%
48 Bislig City Integrated Development Project-IC, Surigao Del Sur	55,000	55,000	-	55,000	1,399	54,153	1,394	-	53,601	847	4	52,759	98%	100%	3%
49 Ditsaan-Ramain Irrigation Project, Lanao del Sur	46,000	46,000	-	46,000	17,339	42,028	16,157	-	28,661	3,972	1,182	25,871	91%	93%	38%
50 Libang Irrigation Project, Agusan del Sur	275,000	275,000	(155,000)	120,000	6,859	116,152	6,804	-	113,141	3,848	56	109,348	97%	99%	6%
Sub-Program 2: Establishment of Pump Irrigation	2,508,542	2,508,542	-	2,508,542	389,625	2,419,455	346,030	-	2,118,917	89,087	43,594	2,073,425	96%	89%	14%
51 Alfonso Lista Pump Irrigation Project, Ifugao	460,000	460,000	-	460,000	50,609	445,263	50,609	-	409,391	14,737	-	394,653	97%	100%	11%
52 Chico River Pump Irrigation Project, Cagayan	1,448,807	1,448,807	-	1,448,807	43,747	1,406,945	1,850	-	1,405,060	41,862	41,897	1,405,095	97%	4%	0%
Peso Counterpart	357,330	357,330	-	357,330	43,747	315,468	1,850	-	313,583	41,862	41,897	313,618	88%	4%	1%
Loan Proceeds	1,091,477	1,091,477	-	1,091,477	-	1,091,477	-	-	1,091,477	-	-	1,091,477	100%		0%
53 Establishment of Groundwater Pump IP (EGPIP)	599,735	599,735	-	599,735	295,268	567,247	293,571	-	304,467	32,488	1,697	273,677	95%	99%	52%
Sub-Program 3: Small Reservoir Irrigation	1,440,625	1,440,625	(120,000)	1,320,625	292,156	816,759	279,597	-	1,028,469	503,866	12,559	537,162	62%	96%	34%
54 Bayaas Small Reservoir Irrigation Project	20,000	20,000	-	20,000	2,509	20,000	2,509	-	17,491	-	-	17,491	100%	100%	13%
55 Dumoloc Small Reservoir Irrigation Project	100,000	100,000	-	100,000	2,256	10,493	2,256	-	97,744	89,507	-	8,238	10%	100%	21%
56 Gaco Small Reservoir Irrigation Project	126,000	126,000	-	126,000	1,682	6,800	1,682	-	124,318	119,200	-	5,118	5%	100%	25%
57 Sulvec Small Reservoir Irrigation Project	50,000	50,000	-	50,000	28,975	49,484	28,975	-	21,025	516	-	20,509	99%	100%	59%
58 Bulu Small Reservoir Irrigation Project, Bulacan	50,000	50,000	-	50,000	34,393	40,669	23,135	-	15,607	9,331	11,259	17,535	81%	67%	57%
59 Balbalungao Small Reservoir Irrigation Project, Nueva Ecija	170,000	170,000	-	170,000	73,247	168,242	73,247	-	96,753	1,758	-	94,995	99%	100%	44%
60 Macalelon Small Reservoir Irrigation Project	170,955	170,955	-	170,955	83,807	165,808	83,807	-	87,148	5,147	-	82,000	97%	100%	51%
61 Ibingan Small Reservoir Irrigation Project, Sorsogon	84,170	84,170	-	84,170	11,158	66,348	11,158	-	73,012	17,822	-	55,190	79%	100%	17%
62 Bayuyan Small Reservoir Irrigation Project	100,000	100,000	-	100,000	126	5,670	126	-	99,874	94,330	-	5,544	6%	100%	2%
63 Benliw Small Reservoir Irrigation Project	27,500	27,500	-	27,500	5,027	16,493	4,527	-	22,473	11,007	500	11,965	60%	90%	27%
64 Cabano Small Reservoir Irrigation Project	100,000	100,000	-	100,000	71	3,215	71	-	99,929	96,785	-	3,144	3%	100%	2%
65 Hibale Small Reservoir Irrigation Project	100,000	100,000	-	100,000	3,035	87,218	3,035	-	96,965	12,782	-	84,183	87%	100%	3%
66 Mabini Cayacay Small Reservoir Irrigation Project	27,500	27,500	-	27,500	12,378	21,010	12,378	-	15,122	6,490	-	8,633	76%	100%	59%

PATICULARS	GAA 1	SARO a	NBC 580 b	NET OF SARO 2=a+b	NCA 3	Obligation 4	Disbursement 5	BALANCES					UTILIZATION RATE		
								Unreleased SARO 6=1-a	Unfunded SARO 7=2-3	Unobligated SARO 8=2-4	Unutilized NCA 9=3-5	Unpaid Obligation 10=4-5	Obligation/ SARO 11=4/2	Disbursement/ NCA 12=5/3	Disbursement/ Obligation 13=5/4
67 Bonot-bonot Small Reservoir Irrigation Project	27,500	27,500	-	27,500	7,276	9,816	6,476	-	20,224	17,684	800	3,340	36%	89%	66%
68 Calunasan Small Reservoir Irrigation Project	50,000	50,000	-	50,000	804	30,266	804	-	49,196	19,734	-	29,462	61%	100%	3%
69 Tulunan Small Reservoir Irrigation Project	237,000	237,000	(120,000)	117,000	25,412	115,228	25,412	-	91,588	1,772	-	89,816	98%	100%	22%
Sub-Program 4: Special Irrigation	5,081,503	5,081,503	-	5,081,503	2,113,782	4,808,689	1,943,673	-	2,967,721	272,814	170,109	2,865,016	95%	92%	40%
70 Balkatan Sagip Patubig Program (BSPP)	58,025	58,025	-	58,025	19,185	54,939	19,185	-	38,840	3,086	-	35,755	95%	100%	35%
71 Small Irrigation Projects (SIP)	5,023,478	5,023,478	-	5,023,478	2,094,597	4,753,749	1,924,488	-	2,928,881	269,729	170,109	2,829,261	95%	92%	40%
Sub-Program 5: Extension/Expansion of Existing	450,603	450,603	-	450,603	228,410	405,973	225,099	-	222,193	44,630	3,311	180,874	90%	99%	55%
72 Extension/Expansion of Existing National Irrigation Systems	81,950	81,950	-	81,950	50,037	73,888	47,970	-	31,913	8,062	2,066	25,917	90%	96%	65%
73 Extension/Expansion of Existing Communal Irrigation Systems	368,653	368,653	-	368,653	178,373	332,085	177,128	-	190,280	36,568	1,245	154,957	90%	99%	53%
Sub-Program 6: Other Irrigation Systems	586,432	586,432	-	586,432	467,646	576,679	455,816	-	118,786	9,753	11,830	120,863	98%	97%	79%
74 Comprehensive Agrarian Reform Program-IC (CARP-IC)	586,432	586,432	-	586,432	467,646	576,679	455,816	-	118,786	9,753	11,830	120,863	98%	97%	79%
TOTAL OPERATIONS	25,617,898	25,617,898	(947,600)	24,670,298	10,086,258	22,396,244	9,388,599	-	14,584,040	2,274,054	697,659	13,007,644	91%	93%	42%
GRAND TOTAL	36,277,289	36,277,289	(947,600)	35,329,689	19,777,550	30,889,606	16,386,479	-	15,552,139	4,440,083	3,391,071	14,503,127	87%	83%	53%
OTHERS															
SECTION 7															
1 Repair of National Irrigation Systems		120,223		120,223	40,021	116,903	40,021		80,202	3,320	0	76,882	97%	100%	34%
Climate Change Adaptation Works (National 2 Systems)		6,000		6,000	-	6,000	-		6,000	-	-	6,000	100%		0%
Integrated Resources and Environment Management Project - International Fund for 3 Agricultural Development		16,346		16,346	-	-	-		16,346	16,346	-	-	0%		
Improvement of Service Roads in National 4 Irrigation Systems		3,190		3,190	-	-	-		3,190	3,190	-	-	0%		
5 Repair of Communal Irrigation Systems		71,565		71,565	5,259	70,300	835		66,306	1,265	4,424	69,465	98%	16%	1%
6 Restoration of Communal Irrigation Systems		61,956		61,956	18	59,016	17		61,938	2,940	1	58,999	95%	95%	0%
Climate Change Adaptation Works 7 (Communal Irrigation Systems)		3,000		3,000	-	3,000	-		3,000	-	-	3,000	100%		0%
8 Nassiping PIP, Cagayan		4,048		4,048	515	4,048	515		3,533	0	-	3,532	100%	100%	13%
9 Dibuluan River Irrigation Project, Isabela		5,059		5,059	-	5,059	-		5,059	(0)	-	5,059	100%		0%
10 Dabubu Irrigation Project, Isabela		6,000		6,000	-	6,000	-		6,000	-	-	6,000	100%		0%
Jalaur River Multipurpose Project - Stage II, 11 Iloilo		100,000		100,000	-	-	-		100,000	100,000	-	-	0%		
Establishment of Groundwater Pump IP 12 (EGPIP)		10,000		10,000	885	9,821	-		9,115	179	885	9,821	98%	0%	0%
13 Small Irrigation Projects (SIP)		60,000		60,000	3,183	55,640	3,110		56,817	4,360	73	52,530	93%	98%	6%
TOTAL		467,387	-	467,387	49,881	335,787	44,499	-	417,506	131,600	5,382	291,288	72%	89%	13%



Republika ng Pilipinas
National Irrigation Administration
 (Pambansang Pangasiwaan ng Patubig)
 Lungsod ng Quezon

Annex D

PROJECT PREPARATION ACTIVITIES
FEASIBILITY STUDY AND DETAILED ENGINEERING FOR IRRIGATION PROJECTS

As of 30 DECEMBER 2020

REGION	CY 2020 PROGRAM & ACCOMPLISHMENT						
	ALLOCATION (P'000)	NUMBER OF PROJECTS					
		PROGRAM		COMPLETED			
				No. of Projects		%	
		FS	DE	FS	DE	FS	DE
CAR	77,000	27	2	14	-	52	-
1	97,000	1	2	-	-	-	-
2 (Proper)	58,800	30	38	2	20	7	53
3 (Proper)	52,000	1	3	-	-	-	-
4-A	17,000	27	-	13	-	48	-
4-B	64,000	17	17	6	-	35	-
5	17,000	4	7	1	5	25	71
6	52,000	5	2	-	-	-	-
7	65,000	51	35	32	27	63	77
8	27,000	45	20	26	10	58	50
9	17,000	56	-	39	-	70	-
10	47,000	11	1	2	-	18	-
11	27,000	4	8	2	5	50	63
12	64,000	6	58	4	16	67	28
13	77,000	5	1	-	-	-	-
Central Office	18,112	-	-	-	-	-	-
TOTAL	776,912	290	194	141	83	49	43

**STATUS OF IRRIGATION DEVELOPMENT
BASED ON INVENTORY
as of December 31, 2020
In Hectares**

REGION	ESTIMATED TOTAL IRRIGABLE AREA a/	Service Area (ha.)					%
		NATIONAL IRRIGATION SYSTEM	COMMUNAL IRRIGATION SYSTEM	PRIVATE IRRIGATION SYSTEM	OTHER GOVERNMENT AGENCY ASSISTED	Total	
CAR	111,295.65	19,361.50	57,857.60	21,574.50	3,537.52	102,331.12	91.95
REGION 1	264,491.00	71,702.44	68,961.65	19,908.70	48,913.33	209,486.12	79.20
REGION 2	457,246.76	182,078.66	56,840.90	42,644.02	20,646.00	302,209.58	66.09
REGION 3	483,830.18	238,672.20	82,321.20	8,745.65	18,245.79	347,984.84	71.92
REGION 4A	85,929.00	29,428.27	26,386.38	6,789.00	2,408.00	65,011.65	75.66
REGION 4B	143,558.95	35,010.46	48,152.17	13,761.71	12,596.00	109,520.34	76.29
REGION 5	239,440.00	24,104.65	77,000.84	24,932.00	17,420.82	143,458.31	59.91
REGION 6	191,253.16	56,622.23	44,163.62	15,103.27	14,441.30	130,330.42	68.15
REGION 7	53,674.35	19,269.80	30,539.00	3,485.00	1,462.50	54,756.30	102.02
REGION 8	91,982.90	28,390.50	41,285.48	6,476.75	2,751.00	78,903.73	85.78
REGION 9	93,706.00	19,050.39	27,689.98	1,944.00	3,481.00	52,165.37	55.67
REGION 10	121,122.69	33,659.29	33,268.49	5,013.54	5,432.25	77,373.57	63.88
REGION 11	177,546.92	38,813.63	32,257.03	1,085.00	1,585.27	73,740.93	41.53
REGION 12	293,226.24	72,440.95	42,136.40	2,840.00	10,276.00	127,693.35	43.55
REGION 13	160,176.75	34,442.52	34,565.08	3,113.00	6,255.00	78,375.60	48.93
ARMM	160,150.45	29,960.89	22,367.78	90.00	295.00	52,713.67	32.92
Total	3,128,631.00	933,008.38	725,793.60	177,506.14	169,746.78	2,006,054.90	64.12

a/ - Estimated Total Irrigable Area (ETIA) is based on the 3% slope criteria.

For regions with service areas greater than the ETIA, it means that more area are now irrigated beyond the ETIA.

SERVICE AND IRRIGATED AREA OF NATIONAL IRRIGATION SYSTEMS
CROP YEAR 2019-2020
As of December 31, 2020

NIA REGION	NO. OF NIS a/	SERVICE AREA a/	FIRMED-UP SERVICE AREA a/	IRRIGATED AREA (ha)									IRRIGATED CROPPING INTENSITY (%)	
				WET SEASON			DRY SEASON			THIRD CROP			SERVICE AREA	FIRMED-UP SERVICE AREA
				PROGRAM	ACTUAL	%	PROGRAM	ACTUAL	%	PROGRAM	ACTUAL	%		
CAR	4	29,741	26,294	17,957	19,992	112.04	17,937	15,072	108.67	-	-	-	117.90	133.35
1	28	71,680	56,029	47,899	54,336	108.37	40,947	41,779	108.57	3,141	3,136	175.46	138.46	177.14
2	22	70,926	66,249	58,742	57,625	104.34	60,659	60,150	104.98	-	-	-	166.05	177.78
MRIIS	3	100,473	86,964	85,398	85,686	101.23	85,246	85,525	100.52	-	-	-	170.41	196.88
3	13	86,910	75,919	52,012	54,660	109.55	42,155	48,042	102.86	-	350	-	118.57	135.74
UPRIIS	21	147,090	142,705	134,971	140,773	110.47	128,015	140,490	109.36	1,419	4,482	-	194.27	200.23
4-A	39	29,092	20,411	16,536	13,702	102.94	16,536	13,931	101.91	278	171	206.88	95.57	136.22
4-B	12	30,950	23,185	22,344	22,598	106.42	21,845	21,647	109.69	558	870	108.91	145.77	194.59
5	17	24,019	23,750	21,065	21,140	101.93	21,075	21,319	101.01	-	-	-	176.77	178.78
6	13	54,211	47,059	43,926	44,464	101.17	39,092	40,160	104.89	5,500	6,165	130.30	167.47	192.93
7	4	12,238	10,768	8,800	8,304	70.00	8,141	7,043	100.69	-	-	-	125.41	142.53
8	19	22,654	22,624	19,944	20,243	99.81	20,087	20,310	99.88	-	-	-	179.01	179.25
9	4	16,408	15,862	15,235	15,304	119.51	15,317	14,986	118.94	-	-	-	184.60	190.96
10	10	39,544	31,682	24,176	25,073	97.33	21,299	23,039	98.48	1,319	1,758	86.99	126.11	157.41
11	9	38,770	36,088	31,153	31,312	97.25	31,153	31,271	93.49	-	-	-	161.42	173.42
12	19	92,673	85,952	80,333	78,834	101.74	79,025	78,434	100.63	-	-	-	169.70	182.97
13	10	34,027	30,356	25,853	24,581	101.66	25,713	24,853	99.89	-	-	-	145.28	162.85
TOTAL	247	901,406	801,899	706,343	718,628	101.74	674,241	688,052	102.05	12,215	16,932	138.62	157.93	177.53

NOTE:

a/ - Inventory as of December 31, 2019

Dry Season - November 2019 to April 2020

Wet Season - May 2020 to October 2020

Regions 8 & 13 have inverted cropping season

SERVICE AND IRRIGATED AREA OF COMMUNAL IRRIGATION SYSTEMS
CROP YEAR 2019-2020
As of December 31, 2020

NIA REGION	NO. OF CIS a/	SERVICE AREA a/	FIRMED-UP SERVICE AREA a/	IRRIGATED AREA (ha)									IRRIGATED CROPPING INTENSITY (%)	
				WET SEASON			DRY SEASON			THIRD CROP (QTA)			SERVICE AREA	FIRMED-UP SERVICE AREA
				PROGRAM	ACTUAL	%	PROGRAM	ACTUAL	%	PROGRAM	ACTUAL	%		
CAR	2,248	55,746	52,487	38,867	40,062	103.08	38,867	39,055	100.48	4,010	4,665	116.33	150.29	159.62
1	1,017	65,251	57,820	48,397	49,024	101.30	33,449	34,466	103.04	2,119	2,402	113.36	131.63	148.55
2	925	54,274	52,883	38,451	37,937	98.66	38,451	38,402	99.87	-	-	-	140.65	144.35
3	427	78,983	69,707	50,937	57,728	113.33	50,856	53,652	105.50	-	-	-	141.02	159.78
4-A	484	25,179	22,422	17,406	16,712	96.01	17,406	16,483	94.70	-	-	-	131.83	148.04
4-B	294	46,022	41,343	36,681	36,717	100.10	33,161	35,154	106.01	-	91	-	156.36	174.06
5	834	76,629	51,872	39,151	39,553	101.03	39,281	38,830	98.85	-	-	-	102.29	151.11
6	838	43,229	35,603	24,265	28,016	115.46	22,645	24,643	108.83	1,650	3,360	203.64	129.59	157.35
7	504	33,709	28,015	25,833	24,621	95.31	24,747	23,219	93.83	3,406	3,416	100.29	152.05	182.96
8	484	39,610	38,393	24,419	24,970	102.26	24,135	24,595	101.90	-	-	-	125.13	129.10
9	363	30,591	26,808	19,338	17,345	89.69	18,615	16,110	86.54	-	-	-	109.36	124.79
10	256	34,583	30,719	20,287	20,158	99.36	19,768	19,819	100.26	900	1,050	116.67	118.63	133.56
11	130	29,672	28,846	21,364	21,167	99.08	21,364	21,118	98.85	-	-	-	142.51	146.59
12	360	51,697	47,523	39,154	38,898	99.35	38,972	36,361	93.30	-	-	-	145.58	158.36
13	233	27,127	24,078	21,386	14,453	67.58	16,831	15,547	92.37	-	-	-	110.59	124.60
TOTAL	9,397	692,301	608,518	465,937	467,360	100.31	438,547	437,453	99.75	12,085	14,984	123.99	132.86	151.15

NOTE:

a/ - Inventory as of December 31, 2018

Dry Season - November 2018 to April 2019

Wet Season - May 2019 to October 2019

Regions 8 & 13 have inverted cropping season

**INSTITUTIONAL DEVELOPMENT PROGRAM ACCOMPLISHMENT UNDER
IRRIGATION MANAGEMENT TRANSFER SUPPORT SERVICES**

as of December 31, 2020

PARTICULARS		NIS	CIS	NIP/SIS/SRIS	TOTAL
As of December 31, 2020 (Overall)					
IA ORGANIZED					
-	Number of IAs	3,137	6,229	1,555	10,921
-	Area Covered (ha.)	833,519.19	577,181.66	163,919.96	1,574,620.81
-	Farmer-Beneficiaries	642,875	492,467	136,029	1,271,371
-	Members	571,020	445,513	85,273	1,101,806
IA REGISTERED					
-	Number of IAs	3,072	5,814	1,402	10,288
-	Area Covered (ha.)	826,787.15	551,942.89	148,624.98	1,527,355.02
-	Farmer-Beneficiaries	632,358	474,968	122,673	1,229,999
-	Members	564,368	430,142	78,209	1,072,719
MODIFIED IMT CONTRACTS					
-	Number of IAs	2,915	4,880	607	8,402
-	Area Covered (ha.)	843,432.36	448,508.62	52,853.83	1,344,794.81
-	Farmer-Beneficiaries	616,328	376,951	38,908	1,032,187
-	Members	557,030	350,262	33,562	940,854
CIS O&M TURNOVER					
-	Number of IAs	N/A	5,325	581	5,906
-	Area Covered (ha.)	N/A	482,523.17	45,897.39	528,421
-	Farmer-Beneficiaries	N/A	423,189	34,308	457,497
-	Members		391,616	29,607	421,223
For CY 2020 (For the Year)					
IA STRENGTHENING					
-	Number of IAs				3,379
-	Area Covered (ha.)				496,943.39
-	Farmer-Beneficiaries				423,084
IA SUSTENANCE					
-	Number of IAs				3,832
-	Area Covered (ha.)				813,967.85
-	Farmer-Beneficiaries				669,972
MODIFIED IMT CONTRACTS					
●	New Contract				
-	Number of IAs				674
-	Area Covered (ha.)				66,520.55
-	Farmer-Beneficiaries				60,661
CAPACITY BUILDING FOR IA					
-	Number of IAs				9,602
-	Number of Batches				9,711
-	Number of Participants				189,457
CAPACITY BUILDING FOR STAFF					
-	Number of Batches				1,522
-	Number of Participants				29,601
ASSISTANCE PROGRAM/INTER-AGENCY COORDINATION					
-	Number of IAs				8,552
-	Number of Batches				3,962
-	Number of Participants				456,637

STATUS OF NIA EQUIPMENT
As of December 31, 2020

Region/ Office	Heavy Equipment (H)				Light Equipment (L)				Other Equipment (O)				Special Equipment (S)				Total					Percent Operable (%)				Overall Percent Operability
	A1	A2	A3	R	A1	A2	A3	R	A1	A2	A3	R	A1	A2	A3	R	H	L	O	S	TOTAL	H	L	O	S	
1	5	15	3	6	16	110	10	2	1	33	-	3	-	-	-	-	29	138	37	-	204	87	93	100	#DIV/0!	93
2	10	20	7	12	7	142	-	20	8	22	9	38	-	1	1	-	49	169	77	2	297	81	100	77	50	93
3	5	22	4	3	33	147	9	33	28	15	3	18	-	2	1	2	34	222	64	5	325	87	95	93	67	94
4-A	4	15	-	2	19	107	14	7	1	7	2	11	1	3	1	-	21	147	21	5	194	100	90	80	80	90
4-B	3	13	8	9	47	52	34	50	6	5	6	23	-	-	-	-	33	183	40	-	256	67	74	65	-	72
5	2	8	-	23	7	50	5	102	-	23	11	67	4	4	2	1	33	164	101	11	309	100	92	68	80	84
6	9	7	12	37	41	99	12	58	2	26	30	73	2	10	2	4	65	210	131	18	424	57	92	48	86	78
7	3	14	12	12	7	83	18	47	33	46	15	44	1	-	-	-	41	155	138	1	335	59	83	84	-	81
8	3	15	13	5	9	76	12	45	3	61	13	48	-	1	-	3	36	142	125	4	307	58	88	83	100	82
9	4	4	7	-	25	23	9	1	14	8	3	-	1	-	-	-	15	58	25	1	99	53	84	88	-	81
10	4	11	8	28	17	81	12	27	3	9	1	2	-	-	-	-	51	137	15	-	203	65	89	92	-	86
11	4	21	-	10	8	73	1	16	56	33	3	2	2	-	3	1	35	98	94	6	233	100	99	97	40	97
12	6	36	29	15	6	132	27	126	7	30	11	56	-	-	-	-	86	291	104	-	481	59	84	77	-	76
13	5	21	12	30	6	76	66	95	5	47	87	58	-	15	3	8	68	243	197	26	534	68	55	37	83	51
CAR	2	5	5	2	6	59	14	14	1	3	3	2	-	-	-	-	14	93	9	-	116	58	82	57	-	78
MRIIS	15	10	3	7	19	148	10	27	32	36	3	11	7	12	-	1	35	204	82	20	341	89	94	96	100	95
UPRIIS	5	15	3	2	22	125	6	16	22	20	-	10	8	-	-	-	25	169	52	8	254	87	96	100	100	96
BBMP	1	1	3	-	14	13	5	-	9	6	-	-	-	-	-	-	5	32	15	-	52	40	84	100	-	85
ARIIP	-	-	-	-	-	6	-	-	-	1	-	-	-	-	-	-	-	6	1	-	7	-	100	100	-	100
HCAAP	2	-	5	-	-	13	9	6	-	23	2	1	-	36	-	-	7	28	26	36	97	29	59	92	100	82
CO	-	-	-	-	23	15	-	-	-	-	-	-	-	-	-	-	-	38	-	-	38	-	100	-	-	100
JRMP2	10	1	-	-	57	2	-	-	29	-	-	-	-	-	-	-	11	59	29	-	99	100	100	100	-	100
TOTAL	102	254	134	203	389	1,632	273	692	260	454	202	467	26	84	13	20	693	2,986	1,383	143	5,205	73	88	78	89	84

NOTE:

A1 - Operable Equipment
A2 - Operating Intermittently & less reliable Equipment
A3 - Non-Operable Equipment needing repair
R - Equipment recommended for disposal

Heavy Equipment (H)
Cranes, Bulldozers, Excavators, etc.
Light Equipment (L)
Service Vehicles, Motorcycles, etc.

Other Equipment (O)
Chainsaws, Motorboats, etc.
Special Equipment (S)
Drilling Rings, Rice Threshers, etc

Overall % Operability = $\frac{A1+A2}{A1+A2+A3} \times 100$

PICTORIALS

CORDILLERA AUTONOMOUS REGION (CAR)

ALFONSO LISTA PUMP IRRIGATION PROJECT



Completed top slab of Sump Intake



Ongoing Concreting works of Closed Conduit at Station 7+260 - 7+560

MARIMAY SMALL RESERVOIR IRRIGATION PROJECT



ON GOING SERVICE ROAD GRAVELLING AT STA. 2+714 TO STA. 2+3+044 LATERAL

REGION 1

Barbar SRIP



Connecting Canal



Main Canal

REGION 2

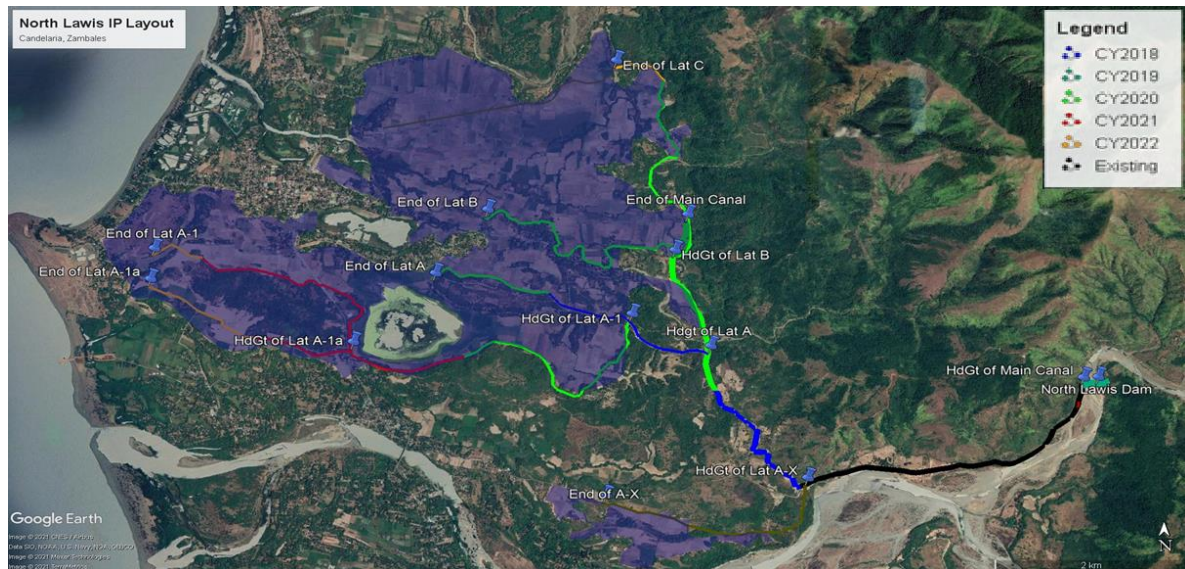
Dabubu River Irrigation Project (San Agustin, Isabela)



Construction of Canal & Canal Structure at Lateral B STA. 0+000-1+800 (CY2020-Section 7)

REGION 3

NORTH LAWIS GENERAL LAY-OUT



North Lawis IP – Diversion Dam



North Lawis IP – Irrigation Facilities



Main
CANAL

Main Canal (Cut & Cover)

Lateral Canals



Lateral
A



Lateral
A-1



Lateral
B

National Irrigation Sector RIP

Solib Dam (Completed) - Rehabilitation of Check Structures



Mangga Check



Santor Check



Butarul Check



Lalic Check



Canalization



MC NORTH CANALIZATION



REGION 4A

QUIPOT IRRIGATION PROJECT

CANAL & STRUCTURES @ STA 6+980.26 TO STA. 10+978.26 LAT. A, SERVICE ROAD @ STA. 7+424.08 TO STA. 8+800.00 LAT. A



REGION 4B

BONGABONG RIVER IRRIGATION PROJECT



Main Canal



Intake Structure



Gatekeeper' Quarter



Bongabong RIP Sub-Office and Staff House



Libtong Checkgate



Odiong Checkgate



Ogbot-Dayhagan Checkgate



San Aquilino Checkgate



San Nicolas Checkgate



Lower Madugo Checkgate

REGION 5

Ibingan SRIP – Earth Fill Dam



SPILLWAY DOWNSTREAM SIDE FACING UPSTREAM



SPILLWAY COCO FIBER NET



DIVERSION & CARE OF RIVER



COLLECTOR CHANNEL AT SPILLWAY AREA LEFT SIDE FACING DOWNSTREAM

REGION 6

HILABANGAN IP

On-going construction of Bench Flume at Lateral A and Lateral C - CY 2020



MALOGO IP

Construction of Triple Barrel Closed Conduit



Construction of DAM



REGION 7

BENLIW SRIP



BENLIW DAM



Canal Lining



REGION 8

Bantayan IP



BANTAYAN IP DIVERSION WORKS



MC- ELEVATED FLUME & CUT & COVER INCLUDING ROAD CROSSING (STA. 6+940-7+105)



TRAPEZOIDAL MAIN CANAL (STA. 14+207-14+450)



MAIN CANAL – ELEVATED FLUME & SIPHON #3 (STA. 5+561-5+744)



BANTAYAN DAM TYPHOON DAMAGE



MAIN CANAL TYPHOON DAMAGE (STA 3+380 – 3+540, 3+720 – 4+140)

Calbiga IP



INTAKE DAM



INTAKE DAM TOWER



BRIDGE FLUME ALONG LATERAL A



LATERAL A FROM STA. 2+560 – 2+680



LATERAL A FROM STA. 1+165-1+500



**BACKFILLING WORKS AT MFD A-15 ALONG
LATERAL A**

Gandara (Pologon AREA) IP



EARTHFILL DAM



UPSTREAM OF THE DAM



SPILLWAY



PART OF THE SERVICE AREA



ONGOING REPAIR OF BARANGAY ROAD/ACCESS TO DAMSITE

REGION 10

Talakag Irrigation Project



Ditsaan-Ramain Irrigation Project



REGION 11

Upper Saug Irrigation Project



Upper Saug Dam



ON-GOING CONSTRUCTION OF MAIN CANAL



ON-GOING CONSTRUCTION OF INCLINED WALL

Manat Irrigation Project



INSTALLATION OF SOLAR PANEL AT MANAT NIP

Profile of Solar Panel:

35m head, 100 cum/h capacity, 1460 rpm, 100mm pump Diameter, 3 phase motor, 380V rated voltage, 43.1 rated Current, maximum passing solid 35mm, 310 kg weight.

22KW = 30 hp

Area = 67 has.



ON-GOING CONSTRUCTION OF PROTECTION DIKE

REGION 12

Kabulnan 2 Multi-Purpose Irrigation and Power Project



INSTALLED RC PIPES WITH COLLAR AT STA. 5+755



FALSE WORK AT MANTISAO CREEK



FALSE WORK AND CONCRETE TOP SLAB OF SALATAN STRUCTURE



ONGOING LEAN CONCRETING ON MANAY CREEK STRUCTURE



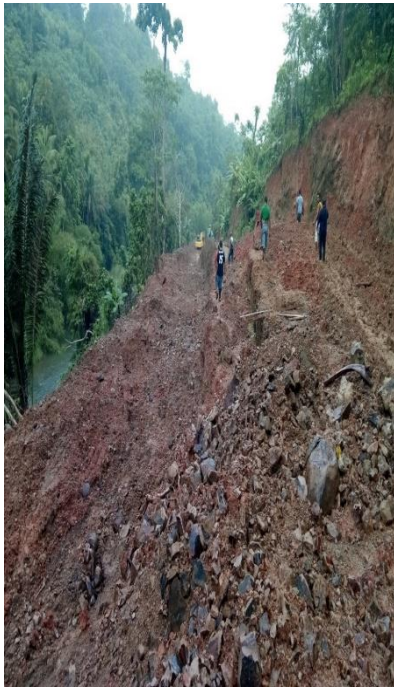
ROAD DIVERSION FOR THE CONSTRUCTION OF STRUCTURE AT STA. 13+380



DURING POURING OF CONCRETE ON SLAB

REGION 13

Bislig City Integrated Development Project-Irrigation Component



Before



During



After

COMPLETED RECTANGULAR CANAL LINING STA. 1+066.00 – 1+300.9 MC



Before



During



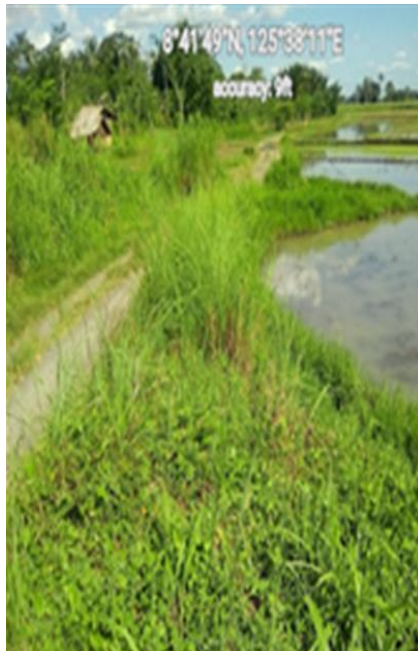
After

COMPLETED RECTANGULAR CANAL LINING 0+550 – 0+700 MC

Mat-I, Ambacon, Pinana-an Irrigation Project (MAP-IP)

Package-1 (Contract Works

Canalization of Lat A1 STA. 0+000-1+314



BEFORE



DURING



AFTER

Dam Embankment



BEFORE



DURING



AFTER

Repair of Downstream Apron



BEFORE



DURING



AFTER

UPPER PAMPANGA RIVER INTEGRATED IRRIGATION SYSTEM

BALBALUNGAO SRIP

CONSTRUCTION OF EARTHFILL DAM AND ITS APPURTENANT STRUCTURES



CONCRETING WORKS AT SPILLWAY STRUCTURE



DRILLING AND GROUTING AT DAM CORE TRENCH



CONSTRUCTION OF ROCK TOE



FABRICATION AND INSTALLATION OF CONDUIT PIPES

UPPER TABUATING SRIP

DAM & ITS APPURTENANT STRUCTURES



MARIKIT IP





CHICO RIVER PUMP IRRIGATION PROJECT



PUMPHOUSE



**ON-GOING CONSTRUCTION OF PUMPHOUSE,
SUBSTATION AND INSTALLATION OF
ELECTRO-MECHANICAL EQUIPMENTS**



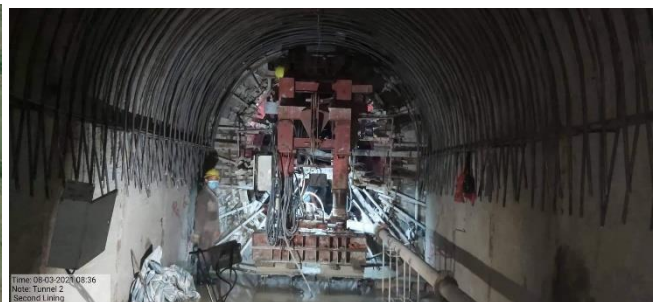
CANAL LINING MC



INLET TUNNEL 1



TUNNEL 2



**ON-GOING COMPLETION OF 2ND LINING OF
TUNNEL**



**ON-GOING CONSTRUCTION OF DIVERSION
CANAL INCLUDING TUNNELS AND
APPURTENANT STRUCTURES**



**ON-GOING CONSTRUCTION OF MAIN CANAL
AND APPURTENANT STRUCTURES
STA. 8+500 TO STA. 33+534(END CHECK)**

BALOG-BALOG MULTI-PURPOSE PROJECT PHASE II



Tunneling works at Tunnel 3 outlet of South Main Canal Package 1, Sta. 6+840.00



Tunneling works at Tunnel 3 outlet of South Main Canal Package 1, Sta. 6+288.30 to Sta. 6+840.00



Ongoing construction of Drainage Crossing at South Main Canal Package 2, Sta. 10+904.00



Ongoing construction of canal lining at South Main Canal Package 2, from Sta. 11+400.00 to Sta. 11+500.00



Aerial view of Tarlac Diversion Dam Ogee #2



Tarlac Diversion Dam Ogee #2

JALAU RIVER MULTIPURPOSE PROJECT STAGE II

JRMP II – High Dam (On – going Activities)



DAM AREA (FACING DOWNSTREAM)



DAM AREA (FACING UPSTREAM)



COMPLETED COFFER DAM (UPSTREAM)



COMPLETED DIVERSION TUNNEL (INLET)



COMPLETED DIVERSION TUNNEL (INTERIOR)



COMPLETED DIVERSION TUNNEL (OUTLET)

JRMP II – Afterbay Dam



AFTERBAY DAM SITE



COMPLETED DIVERSION TUNNEL (INLET)



COMPLETED DIVERSION TUNNEL (INTERIOR)



COMPLETED DIVERSION TUNNEL (OUTLET)



SPREADING OF AGGREGATES NEAR FABRICATION AREA
D/S OF INLET OF AFTERBAY AREA.



CLEARING AND MAKING OF ACCESS FOR AFTERBAY DAM
BODY RIGHT BANK SLOPE



CLEARING AND EXCAVATION FOR AFTERBAY DAM BODY
RIGHT BANK SLOPE BENCHING AT EL.150-160